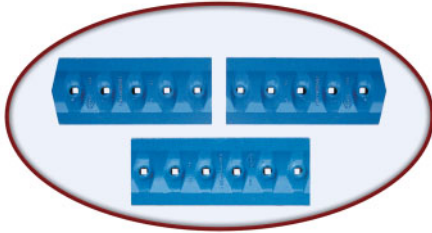




Production and Wear Protection Products for Dozers



CAST EDGES



MACHINE	SERIAL NO.	CENTER EDGE (#) nut/bolt assy.	END EDGE (#) nut/bolt assy.
D10N, D10R-10U	1SH, 7WH, 4LP, 6FP	LA6226HHD-HX, 3 req'd. (240.0 lbs./108.9 kgs.) (5) A114-514	LA6227HHD-HX, 2 req'd. (234.0 lbs./106.2 kgs.) (5) A114-514
D10N, D10R-10SU	1RH, 7RH, 4KP, 6EP	LA6248HHD-HX, 2 req'd. (276.0 lbs./125.2 kgs.) (6) A114-500	LA6227HHD-HX, 2 req'd. (234.0 lbs./106.2 kgs.) (9) A114-514

CAST END BITS



MACHINE	SERIAL NO.	HEAVY DUTY RIBBED END BIT (#) nut/bolt assy.		STANDARD DUTY END BIT (#) nut/bolt assy.	
D10N, D10R-10U	1SH, 7WH, 4LP, 6FP	8E4541HDR, 1 req'd. (285.0 lbs./129.3 kgs.) (7) A114-500	8E4542HDR, 1 req'd. (285.0 lbs./129.3 kgs.) (7) A114-500	8E4541RH, 1 req'd. (278.0 lbs./126.1 kgs.) (7) A114-400	8E4542LH, 1 req'd. (278.0 lbs./126.1 kgs.) (7) A114-400
D10N, D10R-10SU	1RH, 7RH, 4KP, 6EP	8E4541HDR, 1 req'd. (285.0 lbs./129.3 kgs.) (7) A114-500	8E4542HDR, 1 req'd. (285.0 lbs./129.3 kgs.) (7) A114-500	-----	

COMPLETE RIPPER SHANKS & REPLACEMENT PARTS

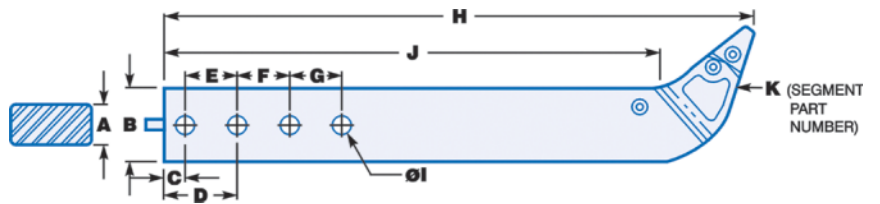


MACHINE	SHANK ASSEMBLY	REPAIR SEGMENT	REPAIR NOSE	SHANK GUARD PART NO.	TEETH
D10	6Y3138, 8E8411, 6Y6141 8E8414, 6Y6144, 8E8415 6Y6147, 8E8416, 8E8417 109-9114, 114-4503	103-8115HX	107-3361HX	9W8365HX	4T5501HX 4T5502HX 3G6503HX 4T4520HX 4T4503HX 3G6502HHX T3G6502 T3G6503 3G6503CLAW
	6Y4679, 8E8412, 6Y5616 118-2140, 109-3135, 8E8413	103-8115HX	107-3361HX	6Y8960HX 6Y8960HHX	
	1V4592, 7T5130, 3G8566 9W4427, 3G2088, 9W4426 9J5954, 1U4873, 7T5131	1U3630HX	103-8114HX	6Y9704HX	
	3G5707, 3G6507	1U3630HX	103-8114HX	1U3644HX 1U3644HHX	

NOTE: For more detailed information, please see 'Replacement Wear Parts for Caterpillar® Machinery' brochure.

SAFETY FIRST: Hensley Industries recommends that you use a soft-faced hammer and ANSI-approved (Z87.1) eye protection while using our products.

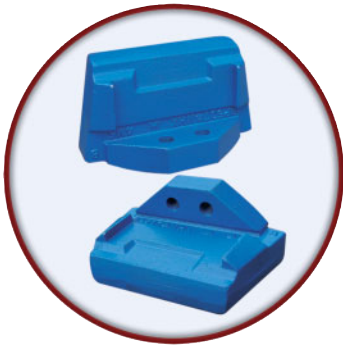
**COMPLETE RIPPER SHANKS
AVAILABLE FROM HENSLEY
ATTACHMENTS DIVISION**



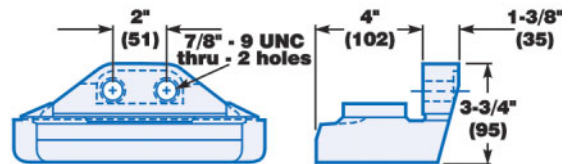
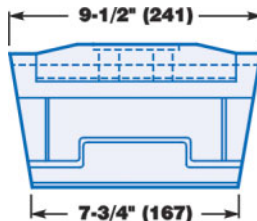
PART NUMBERS	SHANK DIMENSIONS - INCHES (MM)										
	A	B	C	D	E	F	G	H	I	J	K
RS-1182140-HX	4 (102)	15-3/4 (400)	5-7/8 (150)	14 (356)	N/R	N/R	N/R	98-13/16 (2509)	4-1/2 (115)	81-3/16 (2062)	1038115HX
RS-6Y4679-HX	4 (102)	15-3/4 (400)	7-7/8 (200)	20-1/2 (520)	12-5/8 (320)	12-5/8 (320)	12-5/8 (320)	110-13/16 (2815)	3-15/16 (100)	93-1/16 (2364)	1038115HX
RS-6Y6138-HX	3-1/2 (89)	14 (356)	8-11/16 (220)	17-5/16 (440)	8-11/16 (220)	N/R	N/R	91-9/16(2326)	3-15/16 (100)	68-5/8 (1743)	1U3630HX
RS-7T5131-HX	4 (102)	15-3/4 (400)	4 (102)	15 (381)	11 (279)	N/R	N/R	77-15/16 (1980)	4-1/2 (114)	54-15/16 (1395)	1U3630HX
RS-8E8411-HX	3-1/2 (89)	14-15/16 (379)	5-7/8 (149)	19-7/8 (505)	14 (356)	N/R	N/R	98-13/16 (2510)	4-1/2 (114)	81-3/16 (2062)	1038115HX
RS-8E8412-HX	4 (102)	15-3/4 (400)	7-7/8 (200)	20-1/2 (520)	12-5/8 (320)	12-5/8 (320)	12-5/8 (320)	110-13/16 (2815)	4-9/16 (116)	93 (2364)	1038115HX
RS-8E8413-HX	4 (102)	15 (381)	4 (102)	15 (381)	11 (279)	N/R	N/R	77-13/16 (1976)	3-7/8 (99)	60-3/16 (1529)	1038115HX
RS-8E8415-HX	3-1/2 (89)	14 (356)	4 (102)	13-13/16 (350)	9-13/16 (248)	N/R	N/R	71-11/16 (1822)	4-9/16 (116)	53-15/16 (1371)	1038115HX
RS-9W8366-HX	3-1/2 (89)	14-15/16 (379)	5-7/8 (149)	19-7/8 (505)	14 (356)	14 (356)	N/R	98-13/16 (2510)	3-7/8 (99)	81-3/16 (2062)	1038115HX
RS350C072B14D10CC*	3-1/2 (89)	14 (356)	4 (102)	13-3/4 (350)	9-3/4 (248)	N/R	N/R	71-11/16 (1820)	3-15/16 (100)	48-11/16 (1237)	1U3630HX
RS350C092C14D10CC*	3-1/2 (89)	14 (356)	8-11/16 (220)	17-5/16 (440)	8-11/16 (220)	8-11/16 (220)	N/R	91-5/8 (2326)	3-15/16 (100)	68-5/8 (1743)	1U3630HX
RS400C078B16D10CC1*	4 (102)	15-3/4 (400)	4 (102)	15 (381)	11 (279)	N/R	N/R	77-7/8 (1979)	3-15/16 (100)	54-15/16 (1395)	1U3630HX
RS400C078C16D10CC1*	4 (102)	15-3/4 (400)	4 (102)	15 (381)	11 (279)	11 (279)	N/R	77-7/8 (1979)	4 (102)	55-9/16 (1412)	1U3630HX
RS400C092C14D10BB*	4 (102)	14 (356)	8-11/16 (220)	17-5/16 (440)	8-11/16 (220)	8-11/16 (220)	N/R	91-1/2 (2324)	4-1/2 (114)	74-3/8 (1888)	1038115HX
RS400C111C16D10CC*	4 (102)	15-3/4 (400)	7-7/8 (200)	20-1/2 (521)	12-5/8 (320)	12-5/8 (320)	N/R	110-13/16	3-7/8 (99)	87-13/16 (2230)	1U3630HX
RS450C111B15D10BB1*	4-1/2 (114)	15-3/4 (400)	7-7/8 (200)	20-1/2 (521)	12-5/8 (320)	N/R	N/R	110-13/16 (2814)	4-9/16 (116)	93 (2362)	1038115HX

* Indicates custom ripper shank. Other custom shanks are available. Please contact Hensley Attachment Division for more information.

BOGIE GUIDES



8P5374MHX
24.6 lbs./11.2 kgs.



LAMINITE® WEAR RESISTANT PRODUCTS HELP PROTECT YOUR INVESTMENT

“Chocky” Bars



Wear Bars



Wear Buttons



Hensley Industries, Inc.

2108 Joe Field Road • Dallas, Texas 75229 U.S.A.

Customer Service

(888) 406 - 6262 U.S./Canada • (972) 406 - 6262 all other locations

Hensley Attachments

A Division of Hensley Industries, Inc.

800 South Fifth • Mansfield, Texas 76063 U.S.A.

(800) 433 - 3144 • (817) 477 - 3167



www.hensleyind.com



Copyright © 2002 Hensley Industries, Inc.

This publication is protected under the copyright laws of the United States. Unauthorized duplication or distribution is prohibited. Cat & Caterpillar are registered trademarks of Caterpillar, Inc.

Your Authorized Hensley Dealer