



# Cat® Style Replacement Parts

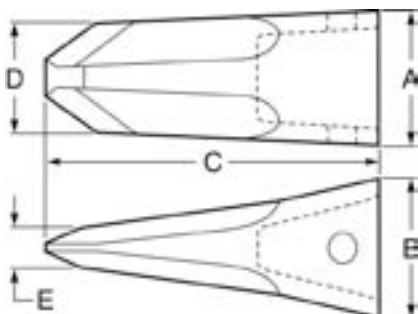
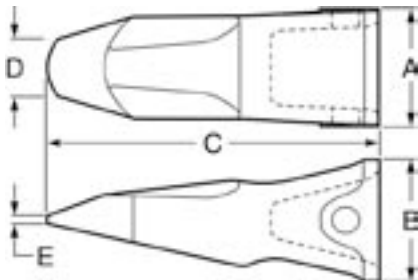
Hensley offers the Dura® line as a quality low-cost alternative to our existing product line. With Direct Replacement Parts available for Hensley Parabolic®, H&L® and Cat® style products, you'll find the part you need to keep you on the job. You can rely on Hensley's ever expanding Dura® line to help you fulfill your need for quality low-cost G.E.T.



**LOADER PENETRATOR**



**ROCK CHISEL**



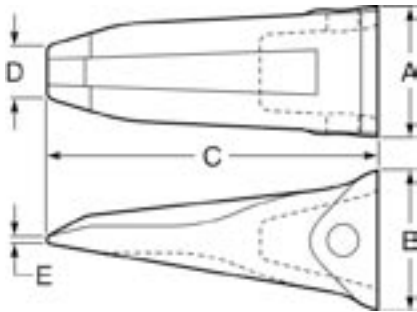
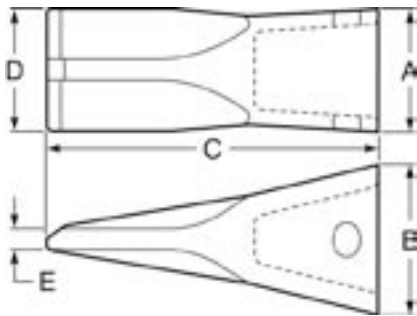
Part No.	Family	DIMENSIONS- inches (mm)					Weight
		A	B	C	D	E	
<b>LOADER PENETRATOR</b>							
<b>D1U3302PT</b>	J300	3.68 (93.5)	4.27 (108.5)	10.28 (261)	1.81 (46)	0.12 (3)	15.3 lb. 6.5 kg.
<b>D1U3352PT</b>	J350	4.25 (108)	4.66 (118.5)	11.81 (300)	2.04 (52)	0.22 (5.5)	24.2 lb. 11.0 kg.
<b>D7T3402PT</b>	J400	4.80 (122)	5.12 (130)	13.15 (334)	2.36 (60)	0.31 (8)	31.0 lb. 14.0 kg.
<b>D9W8452PT</b>	J460	5.27 (134)	5.47 (139)	14 (356)	2.60 (66)	0.35 (9)	45.3 lb. 20.6 kg.
<b>D9W8552PT</b>	J550	6.48 (164.5)	6.48 (164.5)	15.20 (386)	2.83 (72)	0.37 (9.5)	65.3 lb. 29.6 kg.
<b>D6I6603PT</b>	J600	7.60 (193)	7.13 (181)	17.72 (450)	4.49 (114)	0.43 (11)	107.8 lb. 48.9 kg.
<b>D4T4702PT</b>	J700	8.33 (211.5)	8.94 (227)	19.40 (493)	4.33 (110)	0.43 (11)	134.2 lb. 60.9 kg.
<b>ROCK CHISEL</b>							
<b>D1U3302RC</b>	J300	3.44 (341.32)	4.19 (106.37)	9.75 (247.65)	2.87 (73.02)	1.22 (30.96)	11.9 lb. 5.4 kg.
<b>D1U3352RC</b>	J350	4 (101.6)	4.44 (112.72)	11 (279.4)	3.62 (92.07)	1.34 (34.14)	20.6 lb. 9.3 kg.
<b>D7T3402RC</b>	J400	4.69 (119.07)	5.09 (129.39)	12.12 (307.97)	3.87 (98.42)	1.5 (38.1)	26.4 lb. 12.0 kg.
<b>D1U3452RC</b>	J460	5.19 (131.78)	5.37 (136.52)	13 (330.20)	4.25 (107.95)	1.59 (40.49)	31.2 lb. 14.2 kg.
<b>D1U3552RC</b>	J550	6.25 (158.75)	6.12 (155.57)	15 (381)	5.125 (130.17)	1.84 (46.84)	55.9 lb. 25.4 kg.



**SYL**



**EXCAVATOR  
HEAVY  
PENETRATOR**



Part No.	Family	DIMENSIONS- inches (mm)					Weight
		A	B	C	D	E	
<b>SYL</b>							
<b>D1U3302SYL</b>	J300	3.44 (87.33)	4.19 (106.37)	9.25 (234.95)	3.44 (87.32)	0.59 (15.1)	11.8 lb. 5.4 kg.
<b>D1U3352SYL</b>	J350	4 (101.6)	4.44 (112.72)	10.5 (266.7)	4 (101.6)	0.66 (16.66)	16.1 lb. 7.3 kg.
<b>D7T3402SYL</b>	J400	4.69 (119.08)	5.09 (129.39)	11.75 (298.45)	4.69 (119.08)	0.75 (19.05)	30.1 lb. 13.7 kg.
<b>D9W8452SYL</b>	J460	5.19 (131.77)	5.37 (136.52)	12.75 (323.85)	5.12 (384.17)	0.84 (21.44)	31.9 lb. 14.5 kg.
<b>D9W8552SYL</b>	J550	6.25 (158.75)	6.12 (155.57)	14.5 (368.30)	6 (152.40)	1.06 (27)	47.3 lb. 21.5 kg.
<b>EXCAVATOR HEAVY PENETRATOR</b>							
<b>D1U3252HP</b>	J250	3.19 (80.98)	3.75 (95.25)	8.5 (215.9)	1.31 (33.35)	0.19 (4.78)	7.4 lb. 3.4 kg.
<b>D1U3302HP</b>	J300	3.69 (93.68)	4.25 (107.95)	9.75 (247.65)	1.5 (38.1)	0.22 (5.56)	10.8 lb. 4.9 kg.
<b>D1U3352HP</b>	J350	4.31 (109.55)	4.62 (117.48)	11 (279.4)	1.75 (44.45)	0.25 (6.35)	15.7 lb. 7.1 kg.
<b>D7T3402HP</b>	J400	4.72 (119.86)	5.25 (133.35)	12.12 (307.98)	1.94 (49.23)	0.28 (7.14)	21.0 lb. 9.5 kg.
<b>D1U3452HP</b>	J450	5.34 (135.74)	5.56 (141.3)	13 (330.2)	2.19 (55.58)	0.31 (7.95)	28.0 lb. 12.7 kg.
<b>D1U3552HP</b>	J550	6.5 (165.1)	6.37 (161.92)	15 (381)	2.75 (69.85)	0.36 (9.11)	46.0 lb. 20.9 kg.
<b>D1U6602HP</b>	J600	7.78 (197.64)	7.62 (193.67)	18 (457.2)	3.31 (84.15)	0.44 (11.13)	81.0 lb. 36.8 kg.

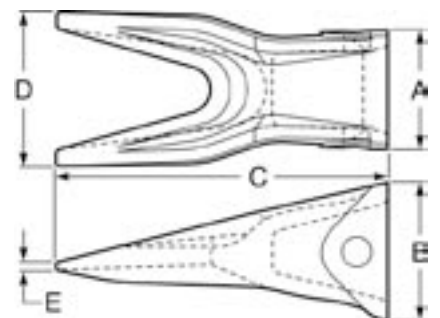
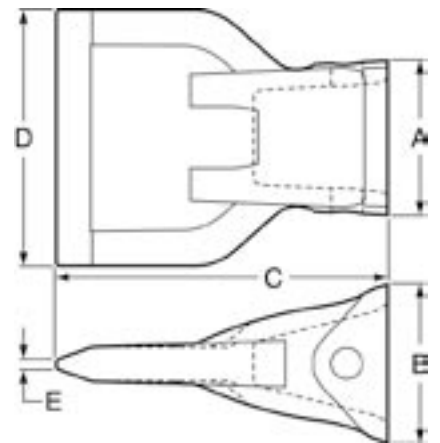


**HEAVY  
FLARE**

**TWIN  
TIGER**



Part No.	Family	DIMENSIONS- inches (mm)					Weight
		A	B	C	D	E	
<b>HEAVY FLARE</b>							
<b>D1U3202FH (109-9200)</b>	J200	2.37 (30.33)	2.69 (68.28)	5.75 (146.05)	3.75 (95.25)	0.16 (3.96)	3.6 lb. 1.6 kg.
<b>D6Y3222FH (186-3010)</b>	J220	2.69 (68.28)	3.281 (83.34)	6.75 (171.45)	4.5 (114.3)	0.19 (4.78)	6.0 lb. 2.7 kg.
<b>D3G8250FH (208-5254)</b>	J250	3.19 (80.98)	3.75 (95.25)	7.87 (200.03)	5 (127)	0.19 (4.78)	9.5 lb. 4.3 kg.
<b>D4T1300FH (107-3300)</b>	J300	3.69 (93.68)	4.25 (107.95)	8.75 (222.25)	6 (152.4)	0.22 (5.56)	14.3 lb. 6.5 kg.
<b>D8J3350FH (107-3350)</b>	J350	4.31 (109.55)	4.62 (117.48)	9.75 (247.65)	7 (177.8)	0.25 (6.35)	20.0 lb. 9.1 kg.
<b>D7T3402FH (107-3400)</b>	J400	4.72 (119.86)	5.25 (133.35)	11 (279.4)	8.25 (209.55)	0.31 (7.95)	21.0 lb. 9.5 kg.
<b>D8J1450FH (107-3450)</b>	J450	5.344 (135.75)	5.56 (141.3)	11.75 (298.45)	9 (228.6)	0.32 (8.20)	36.5 lb. 16.6 kg.
<b>D7J9550FH (107-3550)</b>	J550	6.5 (165.1)	6.37 (161.93)	13.5 (342.9)	11 (279.4)	0.37 (9.53)	58.0 lb. 26.3 kg.
<b>TWIN TIGER</b>							
<b>D1U3252UT</b>	J250	3.25 (82.55)	3.75 (95.25)	8.5 (215.9)	4.19 (106.38)	0.19 (4.91)	8.5 lb. 3.8 kg.
<b>D1U3302UT</b>	J300	6.69 (93.68)	4.25 (107.95)	10.12 (257.18)	4.75 (120.65)	0.22 (5.56)	12.0 lb. 5.4 kg.
<b>D1U3352UT</b>	J350	4.31 (109.55)	4.62 (117.48)	11.25 (285.75)	5.56 (141.3)	0.25 (6.35)	16.8 lb. 7.6 kg.
<b>D7T3402UT</b>	J400	4.72 (119.86)	5.25 (133.35)	12.5 (317.5)	6.12 (155.58)	0.28 (7.14)	23.0 lb. 10.4 kg.
<b>D1U3452UT</b>	J450	5.34 (135.74)	5.56 (141.3)	14.06 (357.2)	6.87 (174.63)	0.31 (7.95)	32.5 lb. 14.7 kg.
<b>D1U3552UT</b>	J550	6.5 (165.1)	6.37 (161.93)	15 (381)	8.25 (209.55)	0.34 (8.74)	50.0 lb. 22.7 kg.
<b>D6I6602UT</b>	J600	7.781 (197.64)	7.62 (193.68)	18 (457.2)	9.87 (250.83)	0.41 (10.31)	85.0 lb. 38.6 kg.





**WELD-ON  
ADAPTERS**

Lip Thickness	Part No.	Family	Type	Weight
0.75" / 19mm	D8J7525	J200	bottom leg	3.1 lb. / 1.4 kg.
1.0" / 25mm	D6Y3224	J225	1-1/2 leg	5.5 lb. / 2.5 kg.
1.0" / 25mm	D1U1254	J250	flush	11.5 lb. / 5.2 kg.
1.25" / 32mm	D6Y3254	J250	1-1/2 leg	8.8 lb. / 4.0 kg.
1.25" / 32mm	D3G6304	J300	1-1/2 leg	15.2 lb. / 6.9 kg.
1.5" / 38mm	D8E9490	J300	1-1/2 leg	14.9 lb. / 6.8
1.0" / 25mm	D1U1304	J300	flush	17.0 lb. / 7.7 kg.
1.5" / 38mm	D3G8354	J350	1-1/2 leg	20.5 lb. / 9.3 kg.
1.57" / 40mm	D6I6354	J350	1-1/2 leg	20.9 lb. / 9.5 kg.
1.5" / 38mm	D1U1354	J350	flush	30.6 lb. / 13.9 kg.
1.75" / 45mm	D6I6404	J400	1-1/2 leg	29.7 lb. / 13.5 kg.
2.0" / 50mm	D8E6464	J460	1-1/2 leg	41.2 lb. / 18.7 kg.
2.36" / 60mm	D6I6554	J550	1-1/2 leg	66.0 lb. / 30.0 kg.
2.5" / 64mm	D3G9494	J550	1-1/2 leg	64.0 lb. / 29.0 kg.

All manufacturer's names, numbers, symbols and descriptions are used for reference purposes only. It is not implied that any part listed is the product of these manufacturers.

**SAFETY FIRST:** Hensley recommends that you use a soft-faced hammer and ANSI-approved (Z87.1) eye protection while using our products.

**Hensley Industries, Inc.**  
2108 Joe Field Road • Dallas, Texas 75229 U.S.A.

**Customer Service**  
(888) 406 - 6262 U.S./Canada  
(972) 406 - 6262 all other locations

**Hensley Attachments**  
A Division of Hensley Industries, Inc.  
800 South Fifth • Mansfield, Texas 76063 U.S.A  
(800) 433 - 3144 U.S./Canada  
(817) 477 - 3167 all other locations  
[www.hensleyind.com](http://www.hensleyind.com)



Copyright © 2007 Hensley Industries, Inc.

This publication is protected under the copyright laws of the United States. Unauthorized copying and distribution is prohibited.

Cat and Caterpillar are registered trademarks of Caterpillar, Inc.

**YOUR AUTHORIZED HENSLEY DEALER**