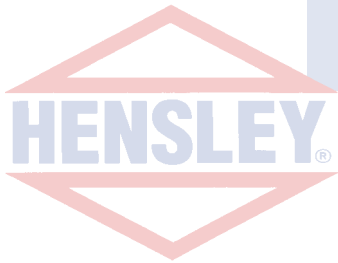
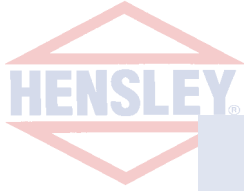


J. I. CASE LOADER PARABOLIC[®] ADAPTERS



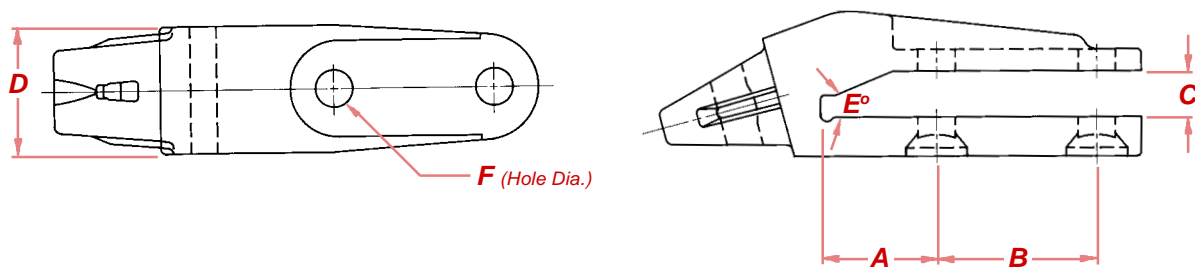
Current Model Wheel Loader	Center Adapter		Corner Adapter	
	Hensley	Replaces O.E.M. Part #	Hensley	Replaces O.E.M. Part #
621 Standard Bucket	621X220	R54275 (H&L L3679A-24)	622X220	L126897 (H&L L3679-24)
621 4 - in - 1 Bucket	721X290	L129666 (H&L L4272A-252)	722X290	L126938 (H&L L3623B-252)
721	721X290	L129666 (H&L L4272A-252)	722X290	L126938 (H&L L3623B-252)
821	821X290	R51174 (H&L L3638A-27)	820X290	L125197 (H&L L3638B-27)
921	921X330	L128973 (ESCO 8701-27V)	920X330	L128975 (ESCO 8702-27V)



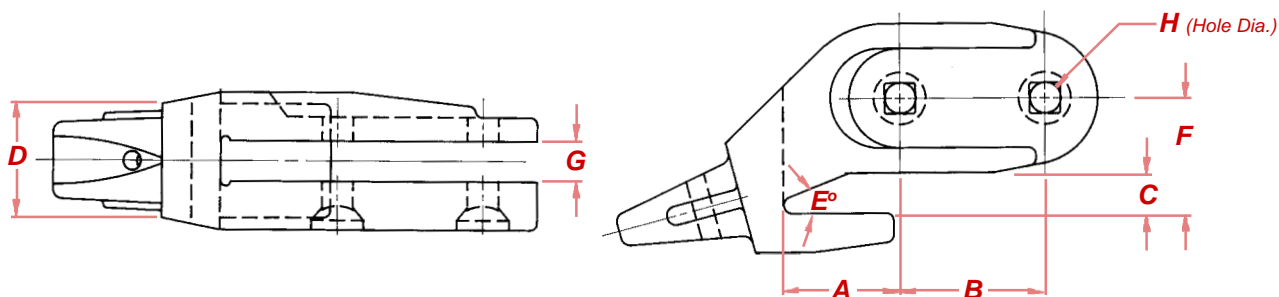
Hensley Industries produces Parabolic[®] Bolt-On adapters for current model J. I. Case Wheel Loaders. The Parabolic[®] adapters match the same bolt pattern as the J. I. Case adapter numbers which are listed.



J. I. CASE STYLE BOLT-ON ADAPTERS



Hensley Parabolic® Center Adapter Part Number	Dimensions (Inches)						WT. (lbs.)
	A	B	C	D	E (Degree)	F (Diameter)	
621X220 (req. 3/4" plowbolts)	2.906	3.750	1.063	3.000	24°	.813	17.8
721X290 (req. 3/4" plowbolts)	2.531	3.500	1.375	3.625	30°	.813	21.0
821X290 (req. 1" plowbolts)	3.313	4.500	1.313	3.625	23°	1.063	24.0
921X330 (req. 1" plowbolts)	3.500	4.250	1.438	4.250	24°	1.063	N/A



Hensley Parabolic® Corner Adapter Part Number	Dimensions (Inches)								WT. (lbs.)
	A	B	C	D	E (Degree)	F	G	H (Diameter)	
622X220 (req. 3/4" plowbolts)	3.063	3.812	1.063	3.000	24°	3.031	1.063	.813	22.0
722X290 (req. 3/4" plowbolts)	2.594	3.563	1.438	3.625	30°	3.219	1.313	.813	24.0
820X290 (req. 1" plowbolts)	3.313	4.500	1.438	3.875	23°	3.188	1.313	1.063	27.0
920X330 (req. 1" plowbolts)	4.188	4.250	1.625	4.250	24°	3.125	1.688	1.063	N/A

Your Authorized Hensley Dealer

Hensley Industries, Inc.
2108 Joe Field Road • Dallas, Texas 75229 U.S.A.

Customer Service
(888) 406 - 6262 U.S./Canada • (972) 406 - 6262 all other locations

Hensley Attachments
A Division of Hensley Industries, Inc.
800 South Fifth • Mansfield, Texas 76063 U.S.A.
(800) 433 - 3144 • (817) 477 - 3167



www.hensleyind.com



SAFETY FIRST: Hensley Industries recommends that you use a soft-faced hammer and ANSI-approved (Z87.1) eye protection while using our products.

Copyright © 2004 Hensley Industries, Inc.

This publication is protected under the copyright laws of the United States. Unauthorized duplication or distribution is prohibited.

All manufacturer's names, numbers, symbols, and descriptions are used for reference purposes only, and it is not implied that any part listed is the product of these manufacturers.

Form0132 12-01-93