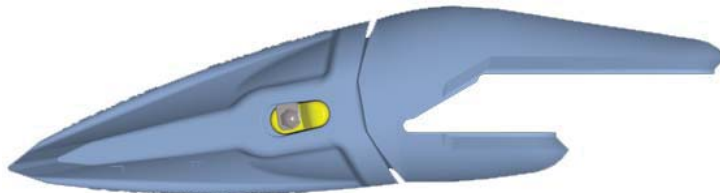




# Specification Guide

Construction Teeth & Adapters  
XS04 - XS70 Series



March 2011



# Tooth Styles by Series

## Weights in Lbs.

---

### Excavator Style Teeth

Series	SYL	XS	T	TV	WT	UT	RC	SD	HP	F
XS04	1.9	1.6	1.7	1.7	1.9	1.8	2.0			2.6
XS05	3.0	2.4	2.8	2.6	2.9	3.2	3.3			4.2
XS10	4.7	4.4	4.3	4.4	4.5	5.0	5.0			6.9
XS15	7.3	6.8	6.4	6.5	6.4	7.2	7.5	7.9		9.5
XS20	11.4	10.0	9.7	9.6	10.5	10.7	11.9	11.6		14.2
XS25	15.9	14.3	15.1	13.8	15.2	15.3	16.7	16.4		20.8
XS30	20.8	19.4	17.6	18.4	21.0	21.0	22.0	22.8	24.6	30.1
XS40	26.9	23.8	24.3	23.0	25.8	25.6	30.0	28.2	30.7	38.5
XS50	38.2	33.1	33.5	31.5	33.8	32.5	38.3	38.3	42.2	51.3
XS70	44.6	41.5	41.4	F.D.	43.7	44.6	46.1	47.8	51.6	63.0

### Loader Style Teeth

Series	BPS	RP1	RP2	RP3	RPX	AG	ABR			
XS04										
XS05										
XS10		6.3								
XS15	10.2	9.5	11.4							
XS20	15.0	14.0	16.8							
XS25	21.5	20.3	24.8							
XS30	28.6	27.2	33.6							
XS40	33.0	34.4	39.8			45.2	53.0			
XS50	47.9	48.4	55.0		69.0	63.0	F.D.			
XS70	62.0	54.0	69.0		86.0	77.0	91.0			

F.D.= Future Development



# Tooth Styles by Series

## Weights in Kgs.

---

### Excavator Style Teeth

Series	SYL	XS	T	TV	WT	UT	RC	SD	HP	F
XS04	0.9	0.7	0.8	0.8	0.9	0.8	0.9			1.2
XS05	1.4	1.1	1.3	1.2	1.3	1.5	1.5			1.9
XS10	2.1	2.0	2.0	2.0	2.0	2.3	2.3			3.1
XS15	3.3	3.1	2.9	2.9	2.9	3.3	3.4	3.6		4.3
XS20	5.2	4.5	4.4	4.4	4.8	4.9	5.4	5.3		6.4
XS25	7.2	6.5	6.8	6.3	6.9	6.9	7.6	7.4		9.4
XS30	9.4	8.8	8.0	8.3	9.5	9.5	10.0	10.3	11.2	13.7
XS40	12.2	10.8	11.0	10.4	11.7	11.6	13.6	12.8	13.9	17.5
XS50	17.3	15.0	15.2	14.3	15.3	14.7	17.4	17.4	19.1	23.3
XS70	20.2	18.8	18.8	F.D.	19.8	20.2	20.9	21.7	23.4	28.6

### Loader Style Teeth

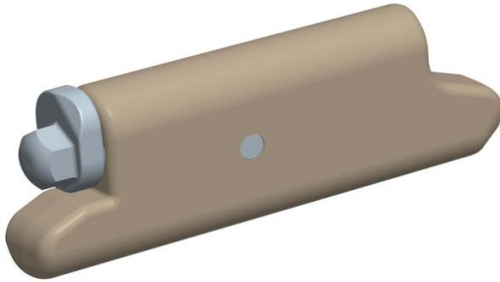
Series	BPS	RP1	RP2	RP3	RPX	AG	ABR			
XS04										
XS05										
XS10		2.9								
XS15	4.6	4.3	5.2							
XS20	6.8	6.4	7.6							
XS25	9.8	9.2	11.2							
XS30	13.0	12.3	15.2							
XS40	15.0	15.6	18.1			20.5	24.0			
XS50	21.7	22.0	24.9		31.3	28.6	F.D.			
XS70	28.1	24.5	31.3		39.0	34.9	41.3			

F.D.= Future Development



# Fastener Styles

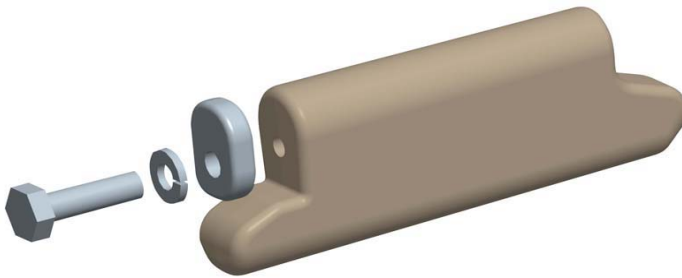
## Standard/Heavy



### Installation Instructions

1. With tooth on nose, install pin with locking tab in the unlock position
2. Using a socket wrench rotate the locking tab clockwise 90° to lock

## Slag



### Installation Instructions

1. With tooth on nose, install entire pin with locking tab in the unlock position
2. Manually rotate the locking tab with a screw driver from unlock to lock position
3. Tighten bolt thoroughly into the body of the pin

### Recommended Pin torque (ft-lbs)

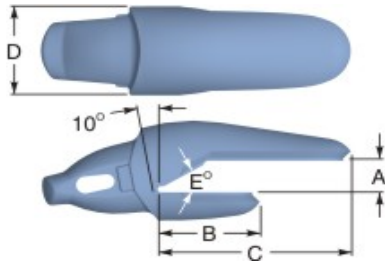
Series	Torque (ft-lbs)
XS10	10
XS15	10
XS20	10
XS25	10
XS30	30
XS40	30
XS50	30
XS70	30



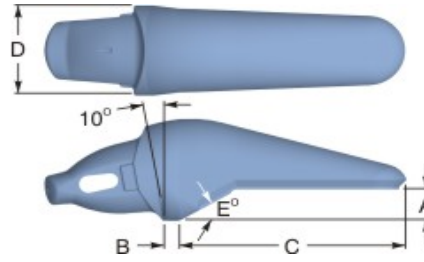


# 04 Series Specifications

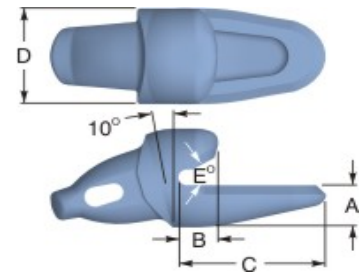
## Weld-on Adapters



**Type 1**  
1-1/2 Leg

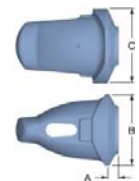


**Type 2**  
Flush Mount



**Type 4**  
Bottom Leg

ADAPTERS																
XS Series	Part Number	Type	Dimensions											Weight		
			A		B		C		D		E Bevel Degree	Lip Thickness				
			"	mm	"	mm	"	mm	"	mm		"	mm			
04	1075XS04	1	0.8	20.6	2.3	58.7	4.5	115.0	2.3	57.9	30°	0.75	20.0	3.4	1.5	
	1100XS04	1	1.1	27.0	2.5	63.1	4.6	118.4	2.3	57.9	30°	1.0	25.0	3.1	2.6	
	1625XS04	1	0.7	17.5	2.3	59.5	4.6	115.8	2.3	57.9	30°	0.6	15.0	3.5	1.6	
	2020MXS04	2	0.8	19.8	0.5	11.9	5.1	130.1	2.3	57.9	30°	0.8	20.0	4.2	1.9	
	7625XS04	4	1.0	25.4	2.3	59.5	4.6	115.8	2.3	57.9	30°	0.6	15.0	3.6	1.6	
	7833XS04	4	1.0	25.0	1.0	25.0	3.2	82.5	2.3	57.9	30°	0.6	15.0	2.8	1.3	
	-	-	-	-	-	-	-	-	-	-	-	-	-	-	-	-
	XS04WN	Weld-on Nose	0.4	9.8	2.0	51.8	2.3	57.9							1.3	0.6

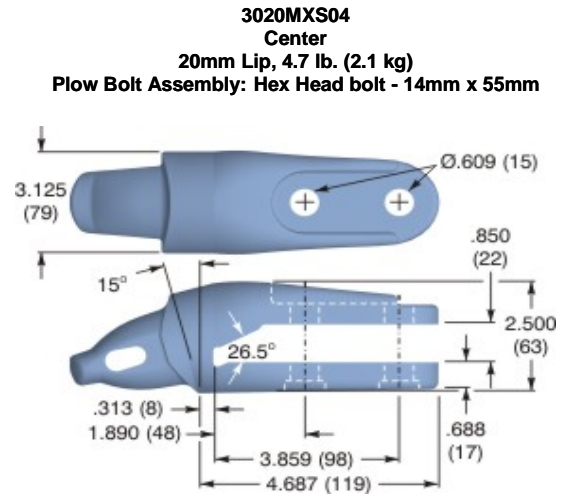
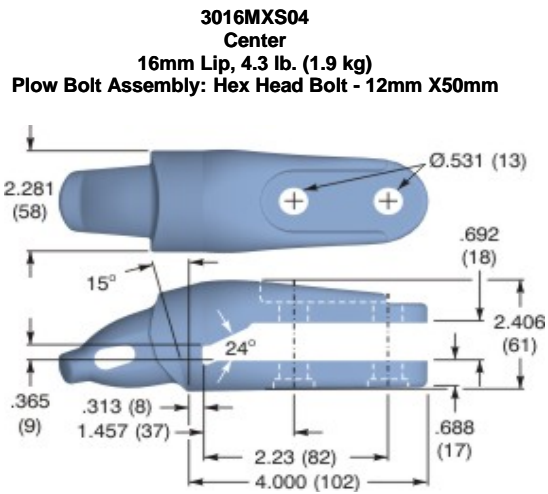


**Weld-on Nose**



# 04 Series Specifications

## Bolt-on Adapters



Authorized Dealer

Hensley Industries, Inc.  
2108 Joe Field Road . Dallas, Texas 75229 U.S.A.  
Customer Service  
888) 406 - 6262 U.S./Canada . (972) 406 - 6262 all other locations  
Hensley Attachments  
A Division of Hensley Industries, Inc.  
800 South Fifth . Mansfield, Texas 76063 U.S.A.  
(800) 433 - 3144 . (817) 477 - 3167

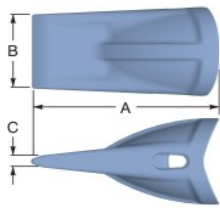


**SAFETY FIRST:** Hensley Industries, Inc. recommends that you use a soft-faced hammer **and** ANSI-approved (Z87.1) eye protection while using our products.  
Copyright © 2010 Hensley Industries, Inc.  
This publication is protected under the copyright laws of the United States. Unauthorized duplication or distribution is prohibited.

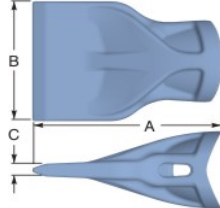


# 05 Series Specifications

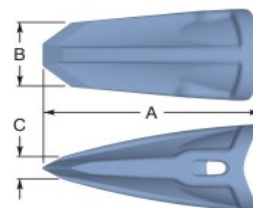
## Teeth & Fasteners



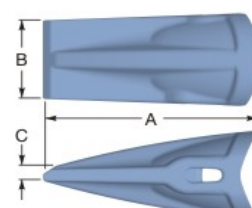
**XS**  
Standard



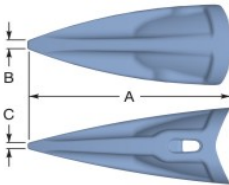
**F**  
Flare



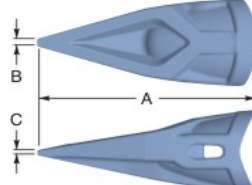
**RC**  
Rock Chisel



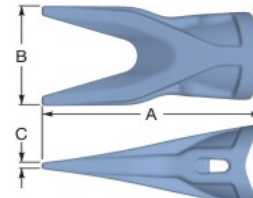
**SYL**  
Sharp, Ribbed



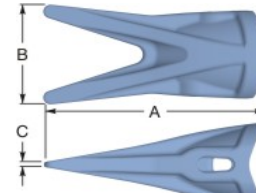
**T**  
Tiger



**TV**  
Tiger



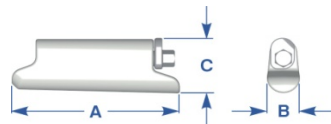
**UT**  
Twin Tiger



**WT**  
Twin Tiger

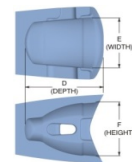
### TEETH

XS Series	Part Number	Pin Assembly	Dimensions											Weight		
			Overall Tooth						Tooth Pocket							
			A		B		C		D		E		F			
			"	mm	"	mm	"	mm	"	mm	"	mm	"	mm	lb	kg
05	XS05	XS05P	5.3	133.0	2.3	58.0	0.1	3.0	2.8	69.8	2.0	51.5	2.1	53.1	2.4	1.1
	XS05F		6.0	152.3	4.1	104.7	0.4	10.0	2.8	69.8	2.0	51.5	2.1	53.1	4.2	1.9
	XS05RC		6.3	160.2	2.0	50.8	0.7	18.2	2.8	69.8	2.0	51.5	2.1	53.1	3.3	1.5
	XS05SYL		5.9	150.7	2.4	61.1	0.3	8.9	2.8	69.8	2.0	51.5	2.1	53.1	3.0	1.4
	XS05T		6.6	166.6	0.3	7.5	0.2	5.5	2.8	69.8	2.0	51.5	2.1	53.1	2.8	1.3
	XS05TV		Under Development													
	XS05UT		6.6	167.4	3.2	81.5	0.2	5.4	2.8	69.8	2.0	51.5	2.1	53.1	3.2	1.5
	XS05WT		6.6	166.6	3.2	81.4	0.2	4.0	2.8	69.8	2.0	51.5	2.1	53.1	2.9	1.3



### FASTENERS

Duty Rating	Part Number	Dimensions						Weight		Socket	
		A		B		C		lb	kg	"	mm
		"	mm	"	mm	"	mm				
Standard Duty	XS05P	2.6	65.8	0.5	11.5	1.1	26.7	0.3	0.1	5/16	8.0
Removal Tool	PRTXS04										

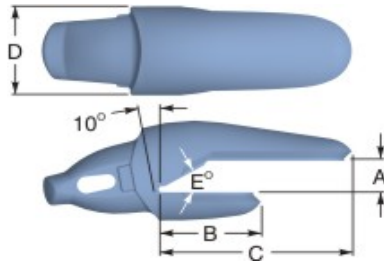


Tooth Pocket

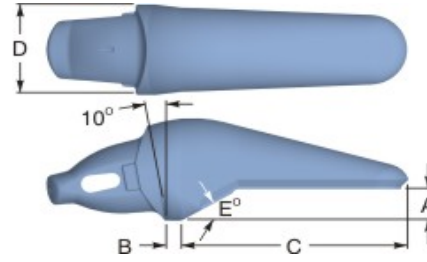


# 05 Series Specifications

## Weld-on Adapters

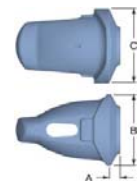


**Type 1**  
1-1/2 Leg



**Type 2**  
Flush Mount

ADAPTERS															
XS Series	Part Number	Type	Dimensions											Weight	
			A		B		C		D		E Bevel Degree	Lip Thickness			
			"	mm	"	mm	"	mm	"	mm		"	mm	"	mm
05	1100XS05	1	1.1	27.0	2.8	71.4	5.3	134.8	2.7	67.4	30°	1.0	25.0	5.6	2.5
	1875XS05	1	0.9	23.8	2.7	67.4	5.3	133.2	2.7	67.4	30°	0.9	22.0	5.4	2.4
	9016MXS05	2	0.6	16.0	0.5	13.5	6.0	152.3	2.7	67.4	25°	0.6	16.0	6.9	3.1
	-	-	-	-	-	-	-	-	-	-	-	-	-	-	-
	-	-	-	-	-	-	-	-	-	-	-	-	-	-	-
	XS05WN	Weld-on Nose	0.4	11.3	2.4	60.3	2.7	67.4							2.2



**Weld-on Nose**

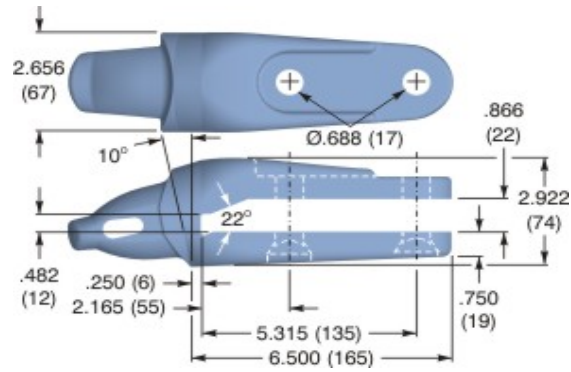


# 05 Series Specifications

## Bolt-on Adapters - WB93, PC35, PC40

---

**3020XS05**  
Center  
20mm Lip, 8.0 lb. (3.6 kg.)  
Plow bolt Assembly: A58-234

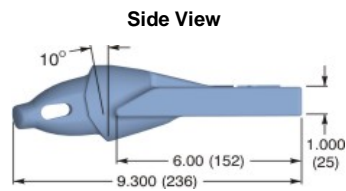
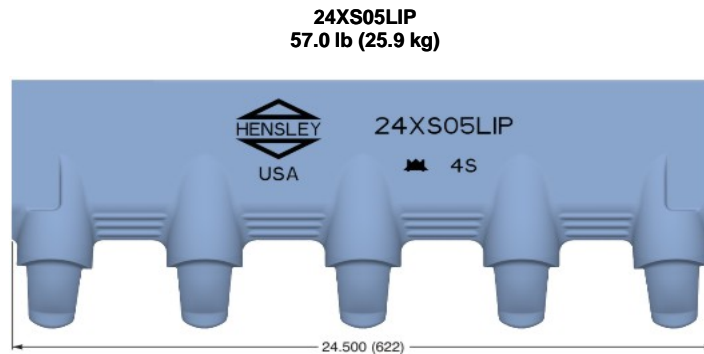
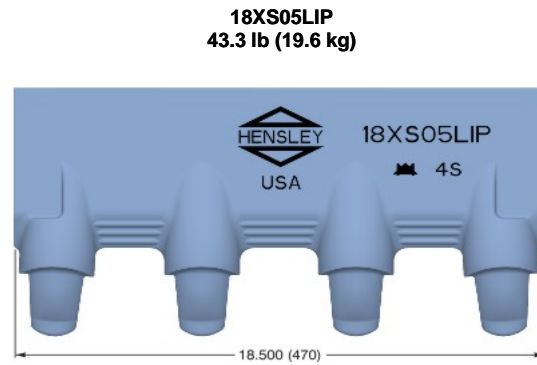
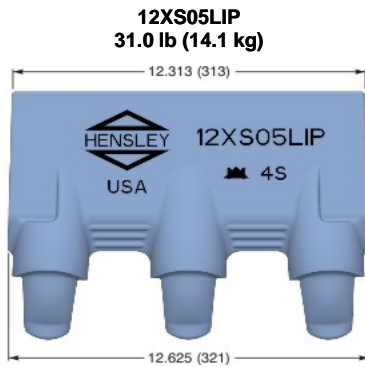


Replaces one-piece tooth Komatsu # KSA4054



# 05 Series Specifications

## Cast Lip



### Authorized Dealer

**Hensley Industries, Inc.**  
2108 Joe Field Road . Dallas, Texas 75229 U.S.A.  
**Customer Service**  
888) 406 - 6262 U.S./Canada . (972) 406 - 6262 all other locations  
**Hensley Attachments**  
A Division of Hensley Industries, Inc.  
800 South Fifth . Mansfield, Texas 76063 U.S.A.  
(800) 433 - 3144 . (817) 477 - 3167



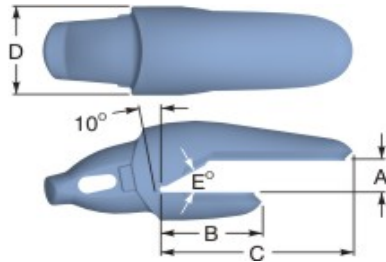
**SAFETY FIRST:** Hensley Industries, Inc. recommends that you use a soft-faced hammer **and** ANSI-approved (Z87.1) eye protection while using our products.  
Copyright © 2010 Hensley Industries, Inc.  
This publication is protected under the copyright laws of the United States. Unauthorized duplication or distribution is prohibited.



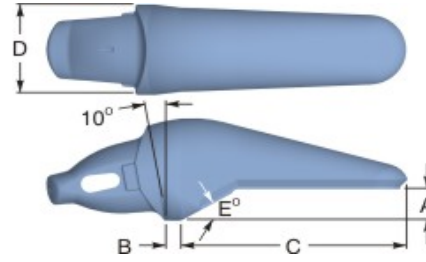


# 10 Series Specifications

## Weld-on Adapters

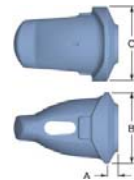


**Type 1**  
1-1/2 Leg



**Type 2**  
Flush Mount

ADAPTERS																
XS Series	Part Number	Type	Dimensions											Weight		
			A		B		C		D		E Bevel Degree	Lip Thickness				
			"	mm	"	mm	"	mm	"	mm		"	mm	"	mm	lb
10	1030MXS10	1	1.2	31.6	3.3	84.1	6.3	160.2	3.1	79.3	30°	1.2	30.0	8.8	4.0	
	1100XS10	1	1.1	27.0	3.2	81.7	6.2	157.8	3.1	79.3	30°	1.0	25.0	8.9	4.0	
	1125XS10	1	1.3	33.3	3.3	84.1	6.3	160.2	3.1	79.3	30°	1.25	30.0	8.4	3.8	
	2030MXS10	2	1.1	28.5	0.5	12.7	7.0	177.8	3.1	79.3	30°	1.2	30.0	11.0	5.0	
	-	-	-	-	-	-	-	-	-	-	-	-	-	-	-	
	XS10WN	Weld-on Nose	0.5	13.7	2.8	69.8	3.1	79.3							3.7	1.7



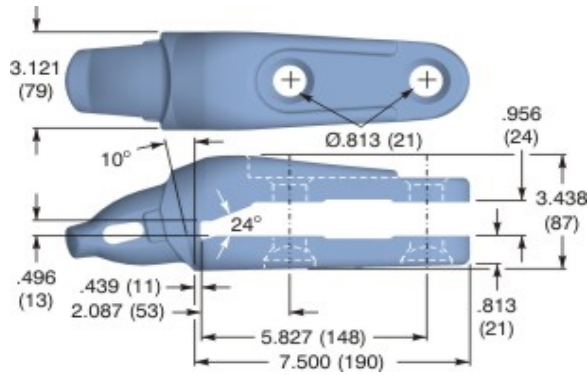
**Weld-on Nose**



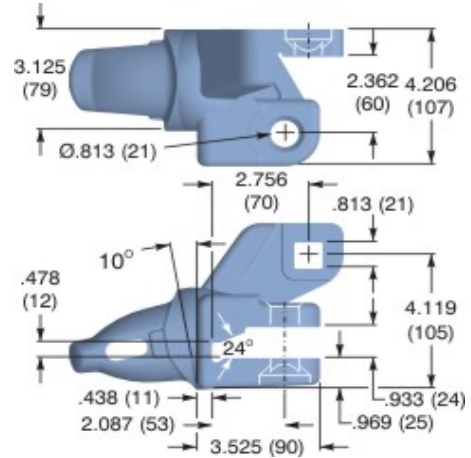
# 10 Series Specifications

## Bolt-on Adapters - WA120, WA150-5

**3022MXS10**  
Center  
22mm Lip, 12.0 lb. (5.4 kg.)  
Plow bolt Assembly: AC34-300



**3022MXS10R (L)**  
LH opposite  
22mm Lip, 10.6 lb. (4.8 kg.)  
Plow bolt Assembly: AC34-300 / AC34-212



Authorized Dealer

Hensley Industries, Inc.  
2108 Joe Field Road . Dallas, Texas 75229 U.S.A.  
Customer Service  
888) 406 - 6262 U.S./Canada . (972) 406 - 6262 all other locations  
Hensley Attachments  
A Division of Hensley Industries, Inc.  
800 South Fifth . Mansfield, Texas 76063 U.S.A.  
(800) 433 - 3144 . (817) 477 - 3167

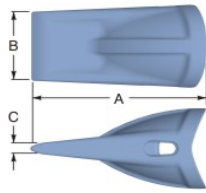


**SAFETY FIRST:** Hensley Industries, Inc. recommends that you use a soft-faced hammer and ANSI-approved (Z87.1) eye protection while using our products.  
Copyright © 2010 Hensley Industries, Inc.  
This publication is protected under the copyright laws of the United States. Unauthorized duplication or distribution is prohibited.

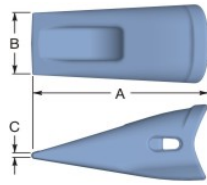


# 15 Series Specifications

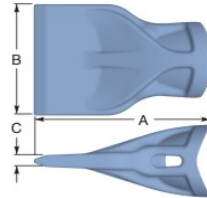
## Teeth & Fasteners



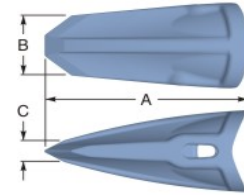
**XS Standard**



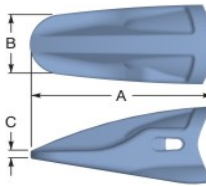
**BPS General Purpose Loader**



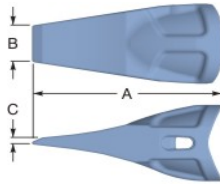
**F Flare**



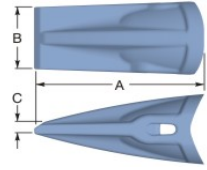
**RC Rock Chisel**



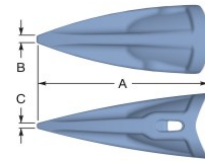
**RP1/RP2 Rock Penetrator**



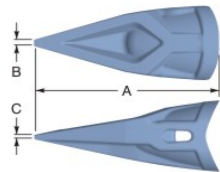
**SD Chisel**



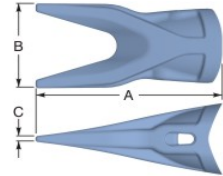
**SYL Sharp, Ribbed**



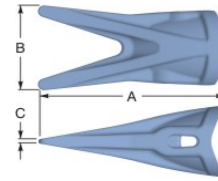
**T Tiger**



**TV Tiger**

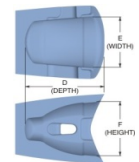
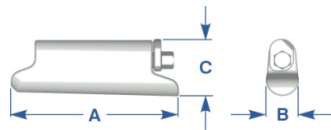


**UT Twin Tiger**



**WT Twin Tiger**

TEETH		Pin Assembly	Dimensions										Weight			
XS Series	Part Number		Overall Tooth					Tooth Pocket								
			A		B		C		D		E		F			
			"	mm	"	mm	"	mm	"	mm	"	mm	"	mm	lb	kg
15	XS15	XS15PC	7.6	193.0	3.1	78.7	0.5	12.7	2.8	70.9	3.9	97.7	2.9	74.1	6.8	3.1
	XS15BPS		8.2	209.2	3.0	77.3	0.3	7.2	2.8	70.9	3.9	97.7	2.9	74.1	10.2	4.6
	XS15F		8.1	204.6	5.6	142.0	0.5	13.5	2.8	70.9	3.9	97.7	2.9	74.1	9.5	4.3
	XS15RC		8.6	217.3	2.7	69.0	1.0	24.6	2.8	70.9	3.9	97.7	2.9	74.1	7.5	3.4
	XS15RP1		8.2	208.1	2.9	73.4	0.4	9.4	2.8	70.9	3.9	97.7	2.9	74.1	9.5	4.3
	XS15RP2		8.5	215.7	2.9	72.4	0.4	9.4	2.8	70.9	3.9	97.7	2.9	74.1	11.4	5.2
	XS15SD		8.5	217.0	1.7	44.0	0.1	1.6	2.8	70.9	3.9	97.7	2.9	74.1	7.9	3.6
	XS15SYL		8.2	207.0	3.3	82.5	0.5	12.3	2.8	70.9	3.9	97.7	2.9	74.1	7.3	3.3
	XS15T		8.9	226.9	0.4	10.2	0.3	7.4	2.8	70.9	3.9	97.7	2.9	74.1	6.4	2.9
	XS15TV		8.9	226.9	0.3	8.4	0.2	5.7	2.8	70.9	3.9	97.7	2.9	74.1	6.5	2.9
	XS15UT		7.7	195.9	3.8	95.5	0.3	6.4	2.8	70.9	3.9	97.7	2.9	74.1	7.2	3.3
	XS15WT		8.9	226.9	4.4	110.5	0.2	5.4	2.8	70.9	3.9	97.7	2.9	74.1	6.4	2.9



Tooth Pocket

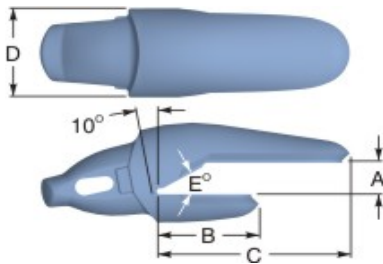
FASTENERS		Part Number	Dimensions					Weight		Socket		
Duty Rating	Pin Assembly		A		B		C		lb	kg	"	mm
			"	mm	"	mm	"	mm				
Standard Duty	XS15PC	3.6	91.2	0.6	15.9	1.3	33.6	0.7	0.3	3/8	10.0	
Slag*	XS15PS	3.6	91.2	0.6	15.9	1.3	33.6	0.7	0.3	3/8	10.0	

\* Slag pin is NOT reusable

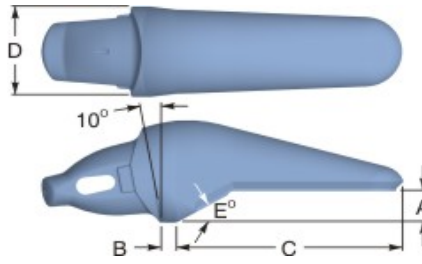


# 15 Series Specifications

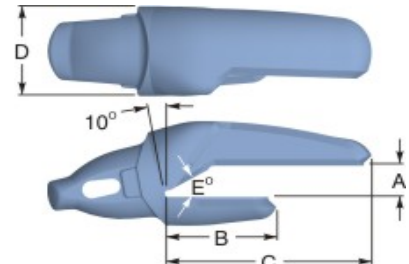
## Weld-on Adapters



**Type 1**  
1-1/2 Leg

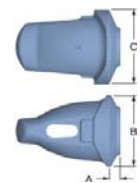


**Type 2**  
Flush Mount



**Type 3**  
Notched Corner

ADAPTERS																
XS Series	Part Number	Type	Dimensions											Weight		
			A		B		C		D		E Bevel Degree	Lip Thickness				
			"	mm	"	mm	"	mm	"	mm		"	mm	"	mm	lb
15	1030MXS15	1	1.2	31.6	3.9	98.4	7.4	187.2	3.4	87.3	30°	1.2	30.0	13.0	5.9	
	1100XS15	1	1.1	27.0	3.9	100.1	7.4	187.3	3.4	87.3	30°	1.0	25.0	13.1	5.9	
	1125XS15	1	1.3	33.3	3.9	98.4	7.4	187.2	3.4	87.3	30°	1.25	30.0	12.7	5.8	
	1150XS15	1	1.6	39.6	3.9	100.0	7.4	188.8	3.4	87.3	30°	1.5	38.0	12.9	5.9	
	2025MXS15	2	1.0	26.6	0.5	12.7	8.1	206.2	3.4	87.3	30°	1.0	25.0	16.3	7.4	
	6125XS15L	3	1.3	33.3	4.0	101.5	7.5	190.4	3.4	87.3	30°	1.25	30.0	14.5	6.6	
	6125XS15R	3	1.3	33.3	4.0	101.5	7.5	190.4	3.4	87.3	30°	1.25	30.0	14.5	6.6	
	-	-	-	-	-	-	-	-	-	-	-	-	-	-	-	-
	XS15WN	Weld-on Nose	-	-	3.3	82.5	3.4	87.3							5.6	2.5



**Weld-on Nose**

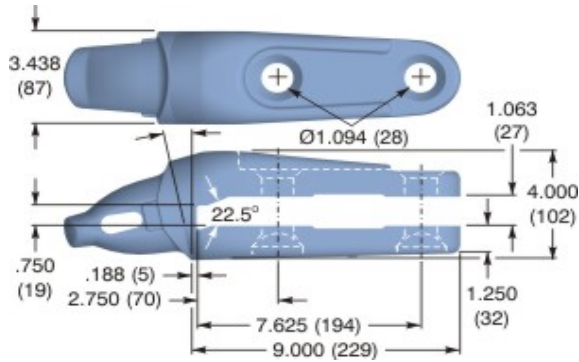


# 15 Series Specifications

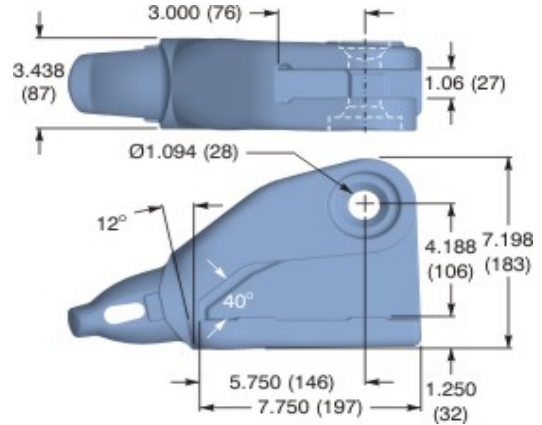
## Bolt-on Adapters

Cat 936, 938, 943, 951, 953

**1U257XS15**  
Center  
1" Lip, 20.5 lb. (9.3 kg.)  
Plow bolt Assembly: AC10-334

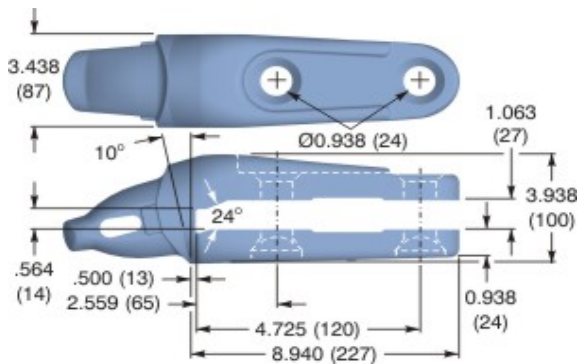


**3G4259XS15 (RH)**  
**3G4258XS15 (LH) opposite**  
1" Lip, 32.7 lb. (14.8 kg.)  
Plow bolt Assembly: AC10-314

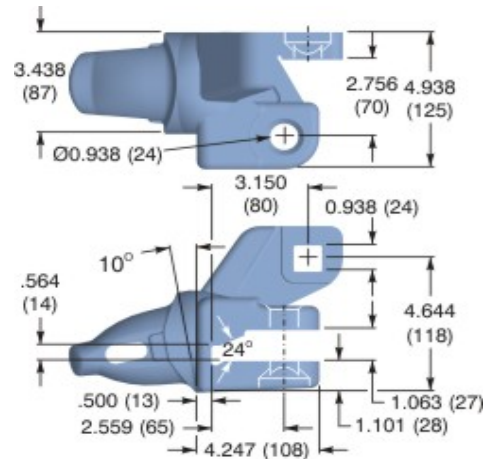


WA180, 200

**3025MXS15**  
Center  
1" Lip, 19.0 lb. (8.6 kg.)  
Plow bolt Assembly: AC78-312



**3025MXS15R**  
**3025MXS15L (LH) opposite**  
1" Lip, 17.3 lb. (7.9 kg.)  
Plow bolt Assembly: AC78-312



**Hensley Industries, Inc.**  
2108 Joe Field Road . Dallas, Texas 75229 U.S.A.  
**Customer Service**  
888) 406 - 6262 U.S./Canada . (972) 406 - 6262 all other locations  
**Hensley Attachments**  
A Division of Hensley Industries, Inc.  
800 South Fifth . Mansfield, Texas 76063 U.S.A.  
(800) 433 - 3144 . (817) 477 - 3167



**Authorized Dealer**

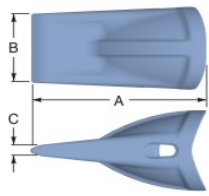
**SAFETY FIRST:** Hensley Industries, Inc. recommends that you use a soft-faced hammer **and** ANSI-approved (Z87.1) eye protection while using our products.  
Copyright © 2010 Hensley Industries, Inc.

This publication is protected under the copyright laws of the United States. Unauthorized duplication or distribution is prohibited.

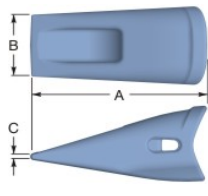


# 20 Series Specifications

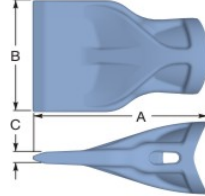
## Teeth & Fasteners



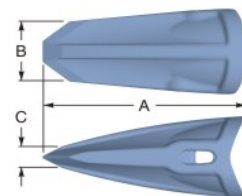
**XS**  
Standard



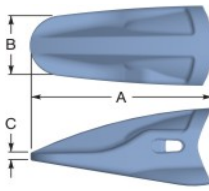
**BPS**  
General Purpose Loader



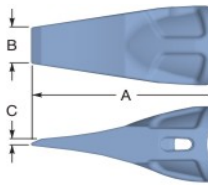
**F**  
Flare



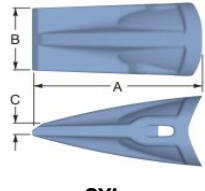
**RC**  
Rock Chisel



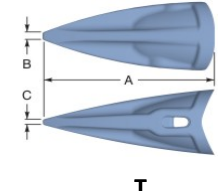
**RP1/RP2**  
Rock Penetrator



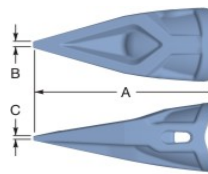
**SD**  
Chisel



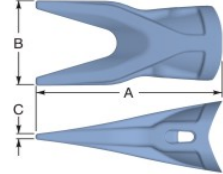
**SYL**  
Sharp, Ribbed



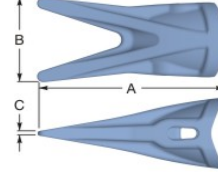
**T**  
Tiger



**TV**  
Tiger

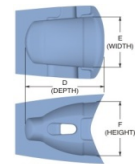
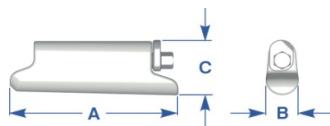


**UT**  
Twin Tiger



**WT**  
Twin Tiger

TEETH		Pin Assembly	Dimensions											Weight		
XS Series	Part Number		Overall Tooth						Tooth Pocket							
			A		B		C		D		E		F			
			"	mm	"	mm	"	mm	"	mm	"	mm	"	mm	lb	kg
20	XS20	XS20PC	8.5	215.9	3.5	88.9	0.6	15.2	4.4	110.9	3.1	79.1	3.3	84.0	10.0	4.5
	XS20BPS		9.3	237.2	3.5	87.6	0.3	8.2	4.4	110.9	3.1	79.2	3.3	84.0	15.0	6.8
	XS20F		9.2	232.3	6.3	160.9	0.6	15.4	4.4	110.9	3.1	79.1	3.3	84.0	14.2	6.4
	XS20RC		9.7	246.7	3.1	78.5	1.1	28.0	4.4	110.9	3.1	79.1	3.3	84.0	11.9	5.4
	XS20RP1		9.3	236.4	3.3	83.3	0.4	10.7	4.4	110.9	3.1	79.2	3.3	84.0	14.0	6.4
	XS20RP2		9.7	245.9	3.3	83.4	0.4	10.7	4.4	110.9	3.1	79.1	3.3	84.0	16.8	7.6
	XS20SD		9.7	246.8	2.0	50.8	0.1	1.2	4.4	110.9	3.1	79.2	3.3	84.0	11.6	5.3
	XS20SYL		9.3	234.8	3.7	93.6	0.6	14.0	4.4	110.9	3.1	79.1	3.3	84.0	11.4	5.2
	XS20T		10.2	257.9	0.5	11.5	0.3	8.4	4.4	110.9	3.1	79.2	3.3	84.0	9.7	4.4
	XS20TV		10.2	257.9	0.4	9.5	0.3	6.5	4.4	110.9	3.1	79.1	3.3	84.0	9.6	4.4
	XS20UT		10.2	257.8	4.9	125.5	0.3	8.4	4.4	110.9	3.1	79.2	3.3	84.0	10.7	4.9
	XS20WT		10.2	257.9	4.9	125.4	0.2	6.2	4.4	110.9	3.1	79.2	3.3	84.0	10.5	4.8



Tooth Pocket

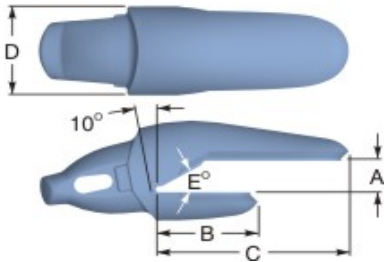
FASTENERS		Part Number	Dimensions						Weight		Socket	
Duty Rating	Pin Assembly		A		B		C		lb	kg	"	mm
			"	mm	"	mm	"	mm				
Heavy Duty	XS20PC	4.06	103.0	0.72	18.3	1.52	38.6	0.9	0.4	7/16	11.0	
Slag*	XS20PS	4.06	103.0	0.72	18.3	1.52	38.6	0.9	0.4	7/16	11.0	

\* Slag pin is NOT reusable

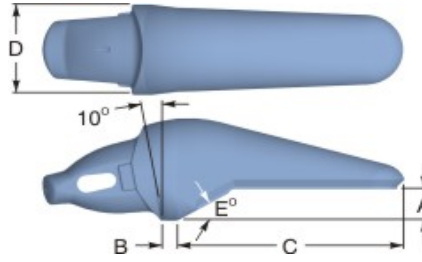


# 20 Series Specifications

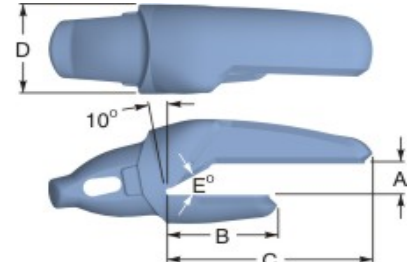
## Weld-on Adapters



**Type 1**  
1-1/2 Leg

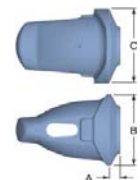


**Type 2**  
Flush Mount



**Type 3**  
Notched Corner

ADAPTERS															
XS Series	Part Number	Type	Dimensions										Weight		
			A		B		C		D		E Bevel Degree	Lip Thickness			
			"	mm	"	mm	"	mm	"	mm		"	mm	"	mm
20	1030MXS20	1	1.2	31.5	4.2	107.4	8.3	210.2	3.9	100.0	30°	1.2	30.0	19.8	9.0
	1040MXS20	1	1.6	41.6	4.2	107.1	8.2	209.1	3.9	100.0	30°	1.6	40.0	18.2	8.3
	1125XS20	1	1.3	33.2	4.2	107.1	8.3	210.2	3.9	100.0	30°	1.25	30.0	18.0	8.2
	1150XS20	1	1.6	39.6	4.3	108.4	8.2	208.6	3.9	100.0	30°	1.5	38.0	18.3	8.3
	2030MXS20	2	1.2	31.5	0.9	22.2	9.3	236.3	3.9	100.0	30°	1.2	30.0	24.4	11.1
	6125XS20L	3	1.3	33.2	4.6	115.7	8.5	215.7	3.9	100.0	30°	1.25	30.0	21.4	9.7
	6125XS20R	3	1.3	33.2	4.6	115.7	8.5	215.7	3.9	100.0	30°	1.25	30.0	21.4	9.7
	6150XS20L	3	1.6	39.7	4.4	111.8	8.4	212.6	3.9	100.0	30°	1.5	38.0	20.8	9.4
	6150XS20R	3	1.6	39.7	4.4	111.8	8.4	212.6	3.9	100.0	30°	1.5	38.0	20.8	9.4
	-	-	-	-	-	-	-	-	-	-	-	-	-	-	-
	XS20WN	Weld-on Nose	1.4	34.9	4.2	106.3	3.4	86.2						10.5	4.8



**Weld-on Nose**

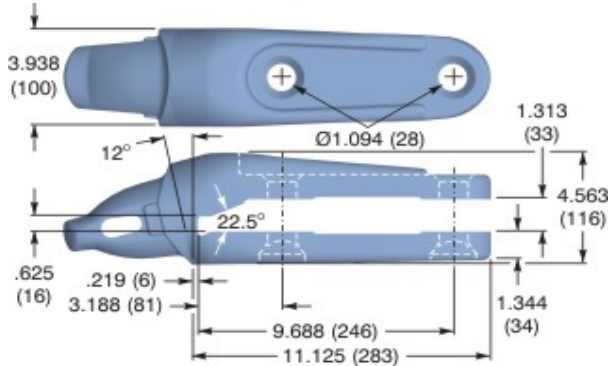


# 20 Series Specifications

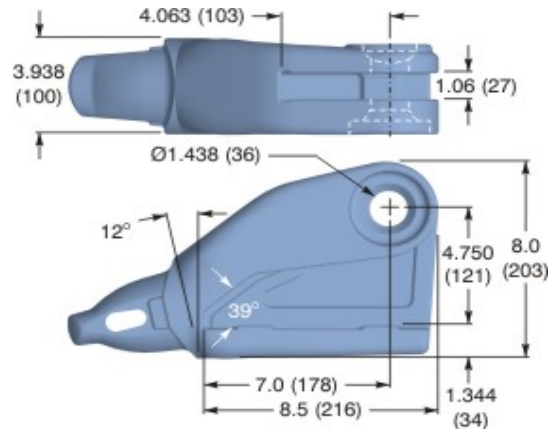
## Bolt-on Adapters

Cat 995, 960, 962, 963

**4T4307XS20**  
Center  
1.25" Lip, 31.6 lb. (14.3 kg.)  
Plow bolt Assembly: AC10-414

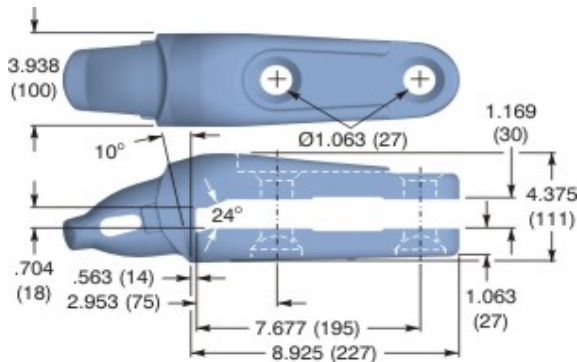


**3G4309XS20 (RH)**  
3G4308XS20 (LH) opposite  
1.25" mm Lip, 44.6 lb. (20.2 kg.)  
Plow bolt Assembly: AC114-400

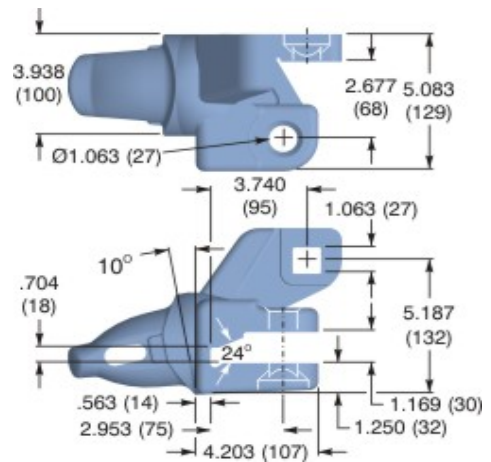


WA250, 320

**3028MXS20**  
Center  
28mm Lip, 26.3 lb. (11.9 kg.)  
Plow bolt Assembly: AC10-334



**3028XS20R (L)**  
LH opposite  
28mm Lip, 22.21 lb. (10.1 kg.)  
Plow bolt Assembly: AC10-334, AC10-200



Authorized Dealer

**Hensley Industries, Inc.**  
2108 Joe Field Road . Dallas, Texas 75229 U.S.A.  
**Customer Service**  
888) 406 - 6262 U.S./Canada . (972) 406 - 6262 all other locations  
**Hensley Attachments**  
A Division of Hensley Industries, Inc.  
800 South Fifth . Mansfield, Texas 76063 U.S.A.  
(800) 433 - 3144 . (817) 477 - 3167



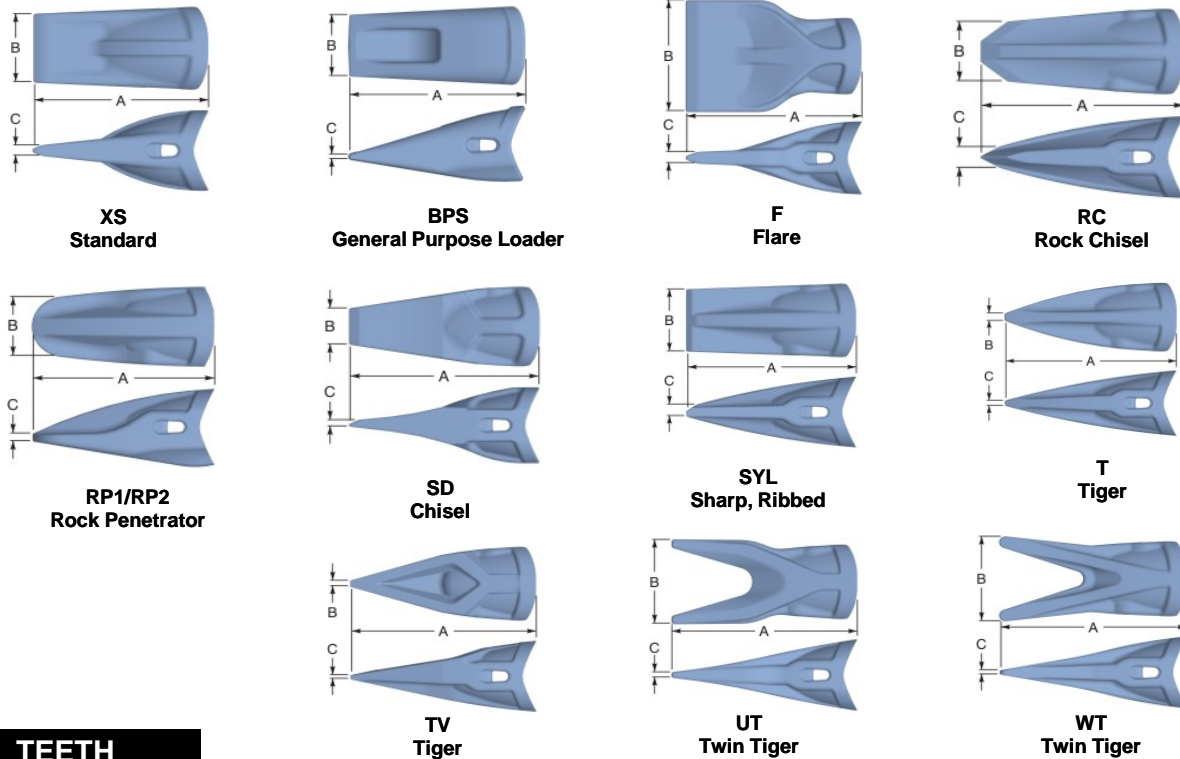
**SAFETY FIRST:** Hensley Industries, Inc. recommends that you use a soft-faced hammer and ANSI-approved (Z87.1) eye protection while using our products.  
Copyright © 2010 Hensley Industries, Inc.

This publication is protected under the copyright laws of the United States. Unauthorized duplication or distribution is prohibited.

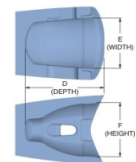
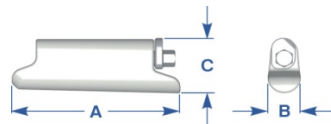


# 25 Series Specifications

## Teeth & Fasteners



TEETH		Pin Assembly	Dimensions											Weight		
XS Series	Part Number		Overall Tooth						Tooth Pocket							
			A		B		C		D		E		F			
			"	mm	"	mm	"	mm	"	mm	"	mm	"	mm	lb	kg
25	XS25	XS25PC	9.7	246.4	4.0	101.6	0.7	17.8	5.0	126.1	3.6	90.4	3.8	95.2	14.3	6.5
	XS25BPS		10.5	266.6	3.9	99.6	0.4	9.3	5.0	126.1	3.6	90.4	3.8	95.2	21.5	9.8
	XS25F		10.4	264.0	7.2	182.5	0.7	17.3	5.0	126.1	3.6	90.4	3.8	95.2	20.8	9.4
	XS25RC		11.0	279.2	3.5	88.8	1.3	31.7	5.0	126.1	3.6	90.4	3.8	95.2	16.7	7.6
	XS25RP1		10.6	268.1	3.7	94.5	0.5	12.2	5.0	126.1	3.6	90.4	3.8	95.2	20.3	9.2
	XS25RP2		11.0	279.2	3.7	94.4	0.5	12.2	5.0	126.1	3.6	90.4	3.8	95.2	24.8	11.2
	XS25SD		11.0	279.4	2.3	57.6	0.1	2.2	5.0	126.1	3.6	90.4	3.8	95.2	16.4	7.4
	XS25SYL		10.5	266.5	4.2	106.3	0.6	16.0	5.0	126.1	3.6	90.4	3.8	95.2	15.9	7.2
	XS25T		11.5	291.9	0.5	13.2	0.4	9.6	5.0	126.1	3.6	90.4	3.8	95.2	15.1	6.8
	XS25TV		11.5	291.9	0.4	10.8	0.3	7.3	5.0	126.1	3.6	90.4	3.8	95.2	13.8	6.3
	XS25UT		11.5	291.9	5.6	142.3	0.4	9.5	5.0	126.1	3.6	90.4	3.8	95.2	15.3	6.9
	XS25WT		11.5	291.9	5.6	142.4	0.3	7.1	5.0	126.1	3.6	90.4	3.8	95.2	15.2	6.9



Tooth Pocket

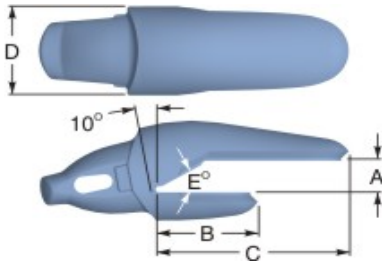
FASTENERS		Part Number	Dimensions						Weight		Socket	
Duty Rating	Pin Assembly		A		B		C		lb	kg	"	mm
			"	mm	"	mm	"	mm				
Heavy Duty	XS25PC	4.6	117.5	0.8	20.9	1.7	43.9	1.2	0.5	7/16	11.0	
Slag*	XS25PS	4.6	117.5	0.8	20.9	1.7	43.9	1.2	0.5	7/16	11.0	

\* Slag pin is NOT reusable

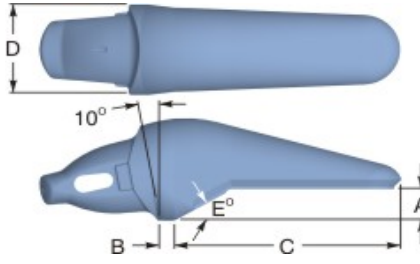


# 25 Series Specifications

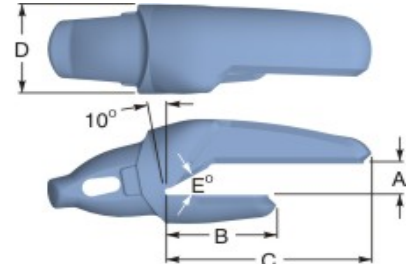
## Weld-on Adapters



**Type 1**  
1-1/2 Leg

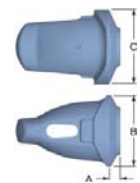


**Type 2**  
Flush Mount



**Type 3**  
Notched Corner

ADAPTERS		Type	Dimensions											Weight	
XS Series	Part Number		A	B	C	D	E	Lip Thickness		Bevel Degree		lb	kg		
								"	mm					"	mm
			"	mm	"	mm	"	mm	"	mm	"	mm	Bevel Degree	Lip Thickness	lb
25	1035MXS25	1	1.4	36.5	4.8	121.1	9.4	237.6	4.5	114.2	30°	1.4	35.0	28.2	12.8
	1040MXS25	1	1.6	41.6	4.8	120.8	9.3	236.0	4.5	114.2	30°	1.6	40.0	27.3	12.4
	1150XS25	1	1.6	39.6	4.8	120.8	9.4	237.3	4.5	114.2	30°	1.5	38.0	27.5	12.5
	1175XS25	1	1.8	45.9	4.8	121.1	9.3	237.1	4.5	114.2	30°	1.75	45.0	26.9	12.2
	2035MXS25	2	1.4	36.5	0.6	15.9	10.5	266.5	4.5	114.2	30°	1.4	35.0	37.8	17.1
	6150XS25L	3	1.6	39.7	5.1	130.1	9.6	244.3	4.5	114.2	30°	1.5	38.0	30.7	13.9
	6150XS25R	3	1.6	39.7	5.1	130.1	9.6	244.3	4.5	114.2	30°	1.5	38.0	30.7	13.9
	6175XS25L	3	1.8	46.0	5.0	126.9	9.5	241.1	4.5	114.2	30°	1.75	45.0	30.8	14.0
	6175XS25R	3	1.8	46.0	5.0	126.9	9.5	241.1	4.5	114.2	30°	1.75	45.0	30.8	14.0
	-	-	-	-	-	-	-	-	-	-	-	-	-	-	-
	XS25WN	Weld-on Nose	1.6	39.7	4.8	120.6	4.5	114.2						12.5	5.7



**Weld-on Nose**

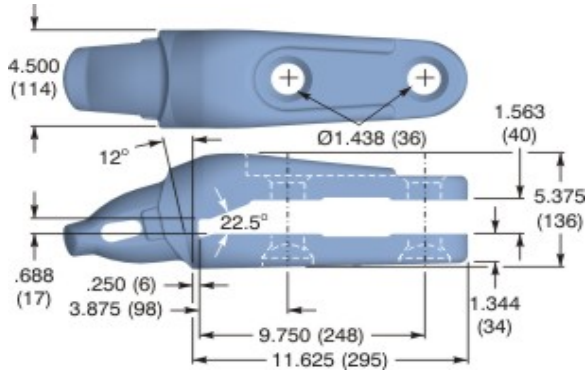


# 25 Series Specifications

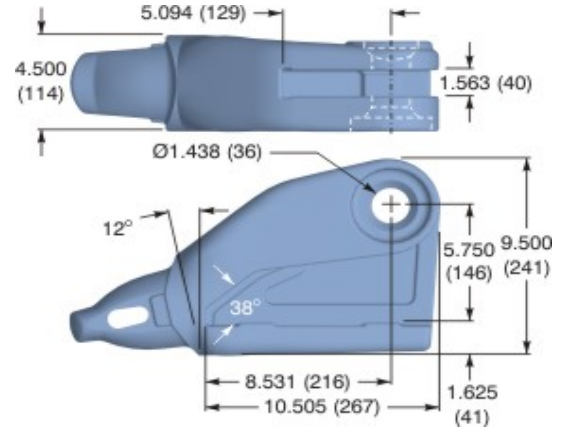
## Bolt-on Adapters

Cat 960, 966, 970, 972, 973, 977

**3G3357XS25**  
Center  
1.625" Lip, 45.2 lb. (20.5 kg.)  
Plow bolt Assembly: AC114-500

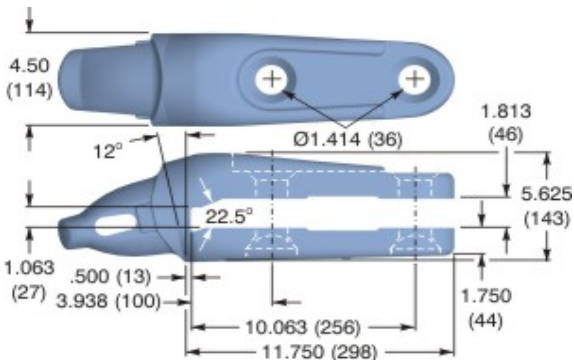


**3G5359XS25 (RH)**  
**3G5358XS25 (LH) opposite**  
1.625" Lip, 67.0 lb. (30.4 kg.)  
Plow bolt Assembly: AC114-400



Cat 980C, 980F

**1U1357XS25**  
Center  
1.75" Lip, 52.0 lb. (23.6 kg.)  
Plow bolt Assembly: AC114-500



**1U1359XS25 (RH)**  
**1U1358XS25 (LH) opposite**  
1.75" Lip, 67.0 lb. (30.4 kg.)  
Plow bolt Assembly: AC114-400

Under Development

Authorized Dealer

**Hensley Industries, Inc.**  
2108 Joe Field Road . Dallas, Texas 75229 U.S.A.  
**Customer Service**  
888) 406 - 6262 U.S./Canada . (972) 406 - 6262 all other locations  
**Hensley Attachments**  
A Division of Hensley Industries, Inc.  
800 South Fifth . Mansfield, Texas 76063 U.S.A.  
(800) 433 - 3144 . (817) 477 - 3167



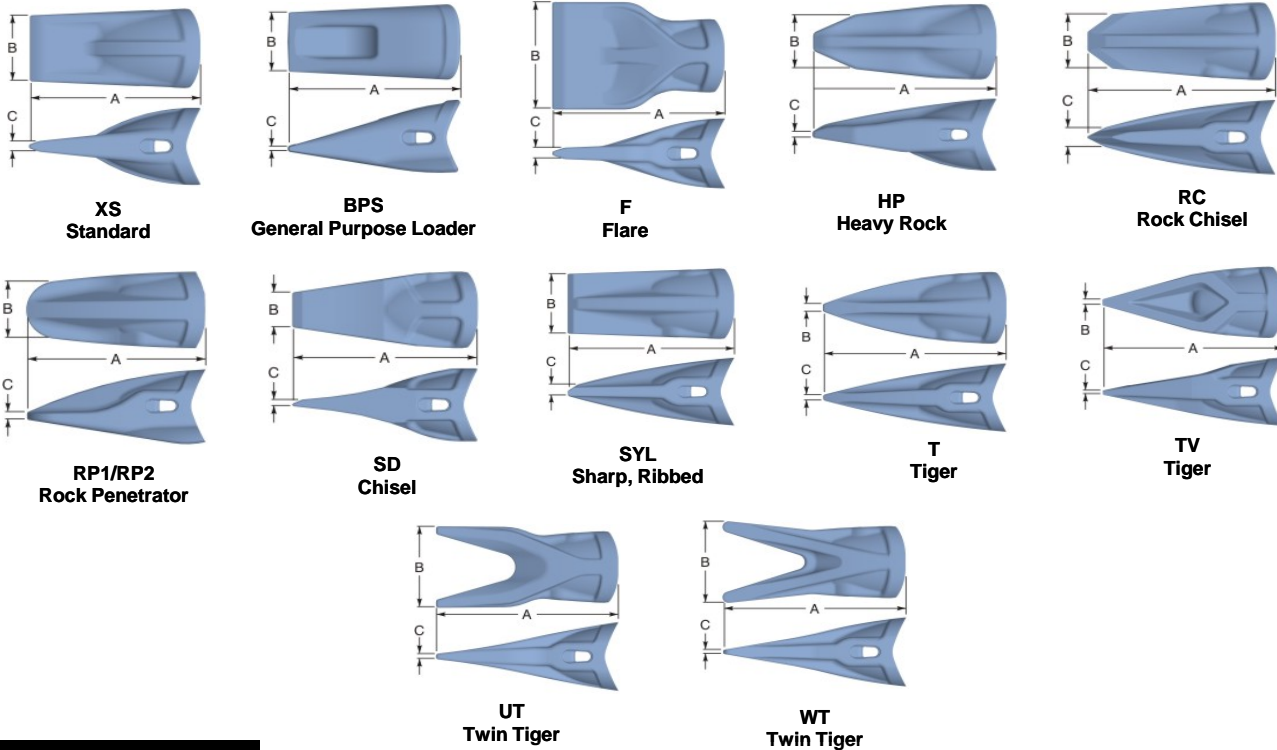
**SAFETY FIRST:** Hensley Industries, Inc. recommends that you use a soft-faced hammer **and** ANSI-approved (Z87.1) eye protection while using our products.  
Copyright © 2010 Hensley Industries, Inc.

This publication is protected under the copyright laws of the United States. Unauthorized duplication or distribution is prohibited.



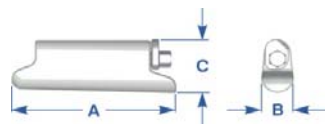
# 30 Series Specifications

## Teeth & Fasteners



TEETH																
XS Series	Part Number	Pin Assembly	Dimensions										Weight			
			Overall Tooth					Tooth Pocket								
			A		B		C	D		E		F				
			"	mm	"	mm	"	mm	"	mm	"	mm	"	mm	lb	kg
30	XS30	XS30PC	10.8	274.3	4.4	111.8	0.7	17.8	5.5	139.6	4.0	102.3	4.2	105.6	19.4	8.8
	XS30BPS		11.6	294.7	4.3	110.0	0.4	10.2	5.5	139.6	4.0	102.3	4.2	105.6	28.6	13.0
	XS30F		11.5	291.9	7.9	201.5	0.8	19.3	5.5	139.6	4.0	102.3	4.2	105.6	30.1	13.7
	XS30HP		Under Development													
	XS30RC		12.2	309.4	3.9	98.2	1.4	35.0	5.5	139.6	4.0	102.3	4.2	105.6	22.0	10.0
	XS30RP1		11.7	296.3	4.1	104.4	0.5	13.4	5.5	139.6	4.0	102.3	4.2	105.6	27.2	12.3
	XS30RP2		12.2	308.6	4.1	104.6	0.5	13.5	5.5	139.6	4.0	102.3	4.2	105.6	33.6	15.2
	XS30SD		12.3	312.7	2.5	63.7	0.1	2.4	5.5	139.6	4.0	102.3	4.2	105.6	22.8	10.3
	XS30SYL		11.6	294.4	4.6	117.5	0.7	17.5	5.5	139.6	4.0	102.3	4.2	105.6	20.8	9.4
	XS30T		12.7	322.8	0.6	14.5	0.4	10.4	5.5	139.6	4.0	102.3	4.2	105.6	17.6	8.0
	XS30TV		12.7	322.8	0.5	11.9	0.3	8.1	5.5	139.6	4.0	102.3	4.2	105.6	18.4	8.3
	XS30UT		12.7	322.8	6.2	157.3	0.4	10.5	5.5	139.6	4.0	102.3	4.2	105.6	21.0	9.5
	XS30WT		12.7	322.8	6.2	157.4	0.3	7.6	5.5	139.6	4.0	102.3	4.2	105.6	21.0	9.5

## FASTENERS



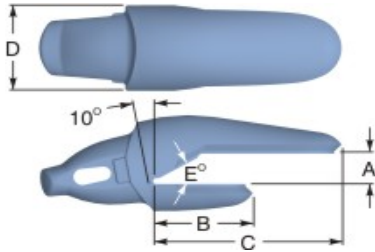
Duty Rating	Part Number	Dimensions						Weight		Socket	
		A		B		C		lb	kg	"	mm
		"	mm	"	mm	"	mm				
Slag*	XS30PS	5.1	130.2	0.9	22.8	1.9	48.0	1.5	0.7	7/16	11.0
Heavy Duty	XS30PC	5.1	130.2	0.9	22.8	1.9	48.0	1.5	0.7	7/16	11.0

\* Slag pin is NOT reusable

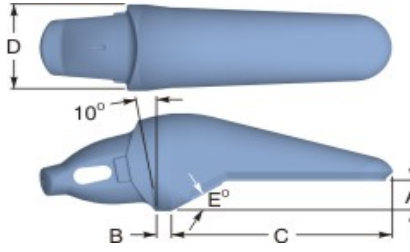


# 30 Series Specifications

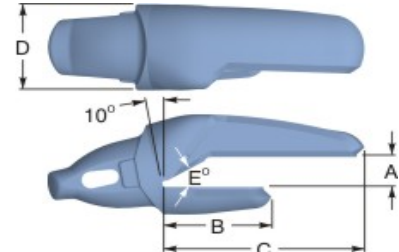
## Weld-on Adapters



**Type 1**  
1-1/2 Leg



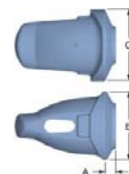
**Type 2**  
Flush Mount



**Type 3**  
Notched Corner

### ADAPTERS

XS Series	Part Number	Type	Dimensions											Weight		
			A		B		C		D		E	Spade Angle	Lip Thickness			
			"	mm	"	mm	"	mm	"	mm	Bevel		"	mm	lb	kg
30	1040MXS30	1	1.6	41.6	5.0	127.9	10.2	258.1	4.9	125.4	30°	-	1.6	40.0	38.6	17.5
	1040MXS30L	1	1.6	41.6	5.6	141.2	10.5	266.5	4.9	125.4	30°	12°	1.6	40.0	41.3	18.7
	1040MXS30R	1	1.6	41.6	5.6	141.2	10.5	266.5	4.9	125.4	30°	12°	1.6	40.0	41.3	18.7
	1045MXS30	1	1.8	46.4	5.0	126.6	10.1	256.3	4.9	125.4	30°	-	1.75	45.0	37.2	16.9
	1050MXS30	1	2.1	52.3	4.9	124.4	10.0	253.8	4.9	125.4	30°	-	2.0	50.0	33.4	15.2
	1175XS30	1	1.8	46.0	5.0	127.8	10.2	258.0	4.9	125.4	30°	-	1.75	45.0	36.6	16.6
	1200XS30	1	2.1	53.0	5.0	125.9	10.1	255.8	4.9	125.4	30°	-	2.0	50.0	34.9	15.8
	2040MXS30	2	1.6	41.6	0.7	17.5	11.6	293.4	4.9	125.4	30°	-	1.6	40.0	46.4	21.0
	6175XS30L	3	1.8	46.0	5.5	140.0	10.4	265.0	4.9	125.4	30°	-	1.75	45.0	37.6	17.1
	6175XS30R	3	1.8	46.0	5.5	140.0	10.4	265.0	4.9	125.4	30°	-	1.75	45.0	37.6	17.1
	6200XS30L	3	2.1	53.1	5.3	133.2	10.5	266.5	4.9	125.4	30°	-	2.0	50.0	38.2	17.3
	6200XS30R	3	2.1	53.1	5.3	133.2	10.5	266.5	4.9	125.4	30°	-	2.0	50.0	38.2	17.3
	-	-	-	-	-	-	-	-	-	-	-	-	-	-	-	-
-	XS30WN	Weld-on Nose	1.8	44.4	5.3	133.2	4.9	125.3							20.1	9.1



**Weld-on Nose**



# 30 Series Specifications

## Bolt-on Adapters - Cat 980F, 980G

---

**619898XS30**  
Center  
1.75" Lip  
Plow bolt Assembly: AC114-500

**Under Development**

**618243XS30 (RH)**  
**618244XS30 (LH) opposite**  
1.75" Lip  
Plow bolt Assembly: AC114-500

**Under Development**

**Hensley Industries, Inc.**  
2108 Joe Field Road . Dallas, Texas 75229 U.S.A.  
**Customer Service**  
888) 406 - 6262 U.S./Canada . (972) 406 - 6262 all other locations  
**Hensley Attachments**  
A Division of Hensley Industries, Inc.  
800 South Fifth . Mansfield, Texas 76063 U.S.A.  
(800) 433 - 3144 . (817) 477 - 3167



**Authorized Dealer**

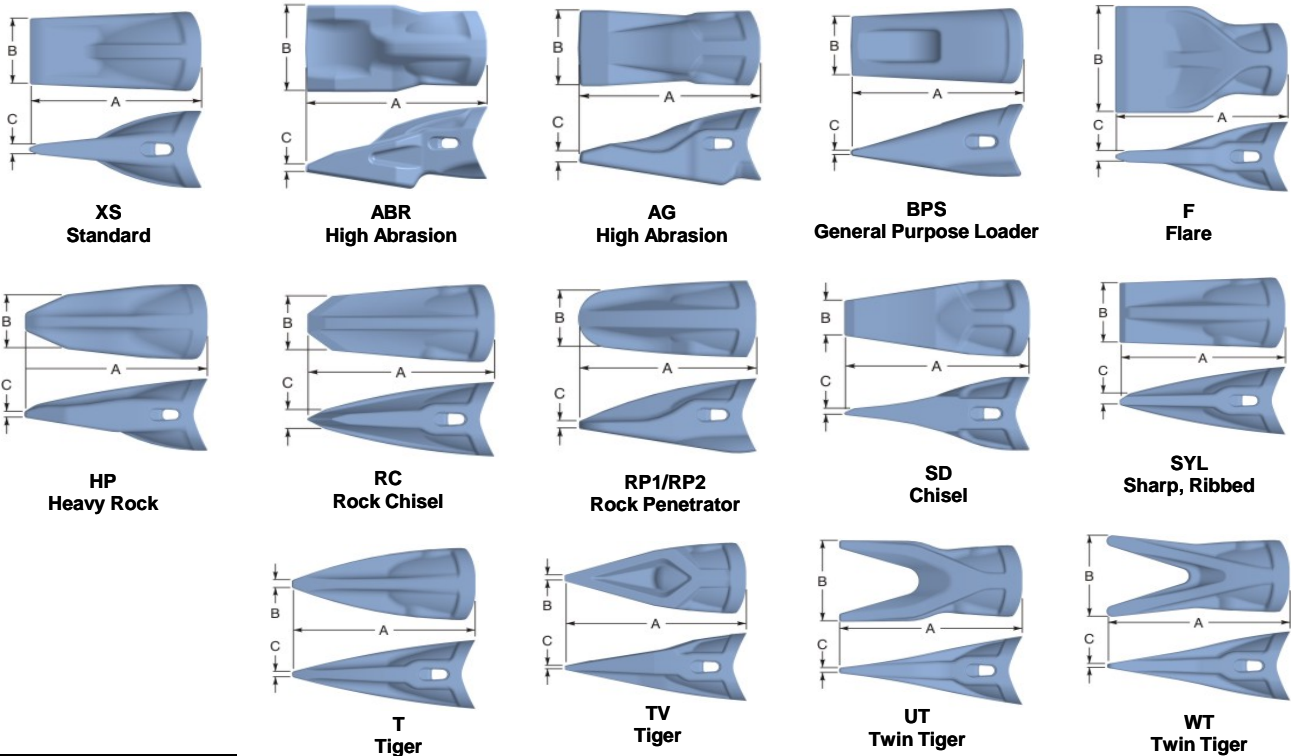
**SAFETY FIRST:** Hensley Industries, Inc. recommends that you use a soft-faced hammer **and** ANSI-approved (Z87.1) eye protection while using our products.  
Copyright © 2010 Hensley Industries, Inc.

This publication is protected under the copyright laws of the United States. Unauthorized duplication or distribution is prohibited.



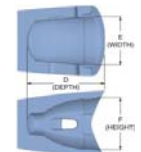
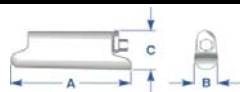
# 40 Series Specifications

## Teeth & Fasteners



TEETH		Pin Assembly	Dimensions											Weight		
XS Series	Part Number		Overall Tooth						Tooth Pocket							
			A		B		C		D		E		F			
			"	mm	"	mm	"	mm	"	mm	"	mm	"	mm	lb	kg
40	XS40	XS40PC	11.5	292.1	4.7	119.4	0.8	20.3	5.9	148.5	4.2	106.9	4.4	112.2	23.8	10.8
	XS40ABR		13.0	331.0	6.7	171.0	0.6	14.0	5.9	148.5	4.2	106.9	4.4	112.2	53.0	24.0
	XS40AG		13.0	330.3	5.9	150.4	0.9	22.5	5.9	148.5	4.2	106.9	4.4	112.2	45.2	20.5
	XS40BPS		12.4	315.0	4.5	114.3	0.4	10.2	5.9	148.5	4.2	106.9	4.4	112.2	33.0	15.0
	XS40F		12.3	312.2	8.5	215.0	0.8	20.6	5.9	148.5	4.2	106.9	4.4	112.2	38.5	17.5
	XS40HP			0.0	0.0	0.0	5.9	148.5	4.2	106.9	4.4	112.2	30.7	13.9		
	XS40RC		13.1	333.2	4.1	105.1	1.5	37.6	5.9	148.5	4.2	106.9	4.4	112.2	30.0	13.6
	XS40RP1		12.4	315.6	4.4	111.4	0.6	14.3	5.9	148.5	4.2	106.9	4.4	112.2	34.4	15.6
	XS40RP2		12.9	328.4	4.4	111.4	0.6	14.2	5.9	148.5	4.2	106.9	4.4	112.2	39.8	18.1
	XS40SD		13.1	332.7	2.7	68.6	0.5	12.7	5.9	148.5	4.2	106.9	4.4	112.2	28.2	12.8
	XS40SYL		12.5	317.3	4.9	125.4	0.7	18.8	5.9	148.5	4.2	106.9	4.4	112.2	26.9	12.2
	XS40T		13.6	344.2	0.6	15.5	0.4	11.2	5.9	148.5	4.2	106.9	4.4	112.2	24.3	11.0
	XS40TV		13.6	344.6	0.5	12.7	0.4	9.5	5.9	148.5	4.2	106.9	4.4	112.2	23.0	10.4
	XS40UT		13.6	344.2	6.8	171.6	0.5	11.9	5.9	148.5	4.2	106.9	4.4	112.2	25.6	11.6
XS40WT	13.6	344.2	6.6	167.5	0.3	8.2	5.9	148.5	4.2	106.9	4.4	112.2	25.8	11.7		

FASTENERS		Part Number	Dimensions						Weight		Socket	
Duty Rating	Pin Assembly		A		B		C		lb	kg	"	mm
			"	mm	"	mm	"	mm				
Slag*	XS40PS	5.4	137.8	1.0	24.3	2.0	51.8	2.0	0.9	9/16	14.0	
Heavy Duty	XS40PC	5.4	137.8	1.0	24.3	2.0	51.8	2.0	0.9	9/16	14.0	



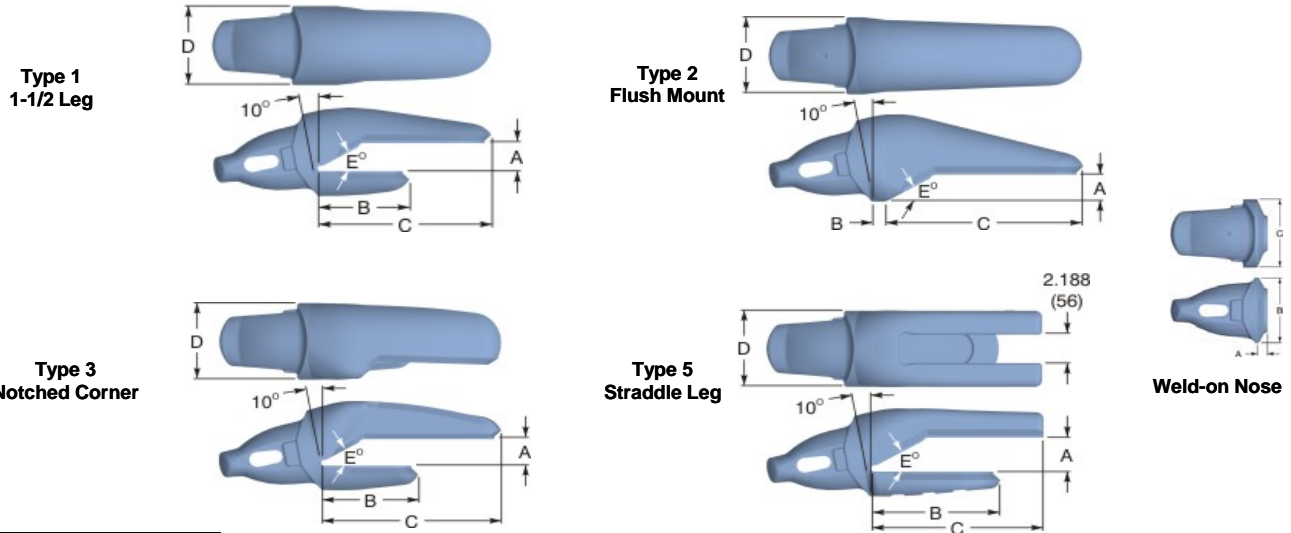
Tooth Pocket

\* Slag pin is NOT reusable



# 40 Series Specifications

## Weld-on Adapters



ADAPTERS		Type	Dimensions											Weight		
XS Series	Part Number		A	B	C	D	E	Spade Angle	Lip Thickness							
									"	mm	"	mm	"	mm	"	mm
40	1045MXS40	1	1.83	46.5	5.75	145.9	11.00	279.2	5.28	134.0	30°	-	1.77	45.0	43.2	19.6
	1055MXS40	1	2.26	57.4	5.64	143.1	10.67	270.8	5.28	134.0	30°	-	2.17	55.0	43.3	19.6
	1060MXS40	1	2.46	62.4	5.56	141.1	11.00	279.2	5.28	134.0	30°	-	2.36	60.0	42.9	19.5
	1060MXS40L	1	2.46	62.4	5.94	150.8	11.13	282.5	5.28	134.0	30°	12°	2.36	60.0	47.3	21.5
	1060MXS40R	1	2.46	62.4	5.94	150.8	11.13	282.5	5.28	134.0	30°	12°	2.36	60.0	47.3	21.5
	1065MXS40	1	2.65	67.3	5.63	142.9	11.00	279.2	5.28	134.0	30°	-	2.56	65.0	43.5	19.7
	1200XS40	1	2.09	53.0	5.63	142.9	11.00	279.2	5.28	134.0	30°	-	2.00	50.0	43.5	19.7
	1200XS40L	1	2.09	53.0	5.88	149.2	11.13	282.5	5.28	134.0	30°	12°	2.00	50.0	46.2	21.0
	1200XS40R	1	2.09	53.0	5.88	149.2	11.13	282.5	5.28	134.0	30°	12°	2.00	50.0	46.2	21.0
	1200XS40SL	5	2.2	55.6			9.1	230.7	5.28	134.0	30°	-	2.00	50.0	54.0	24.5
	1250XS40	1	2.59	65.7	5.75	145.9	11.19	284.0	5.28	134.0	30°	-	2.50	63.0	46.8	21.2
	2045MXS40	2	1.84	46.7	0.75	19.0	12.3	312.2	5.28	134.0	30°	-	1.77	45.0	59.0	26.8
	6200XS40L	3	2.09	53.0	5.81	147.5	11.25	285.5	5.28	134.0	30°	-	2.00	50.0	48.7	22.1
	6200XS40R	3	2.09	53.0	5.81	147.5	11.25	285.5	5.28	134.0	30°	-	2.00	50.0	48.7	22.1
				-	-	-	-	-	-	-	-	-	-	-	-	-
	XS40WN	Weld-on Nose	1.875	47.6	5.594	142.0	5.281	134.0							20.0	9.1

Hensley Industries, Inc.  
 2108 Joe Field Road . Dallas, Texas 75229 U.S.A.  
**Customer Service**  
 888) 406 - 6262 U.S./Canada . (972) 406 - 6262 all other locations  
**Hensley Attachments**  
 A Division of Hensley Industries, Inc.  
 800 South Fifth . Mansfield, Texas 76063 U.S.A.  
 (800) 433 - 3144 . (817) 477 - 3167

Authorized Dealer



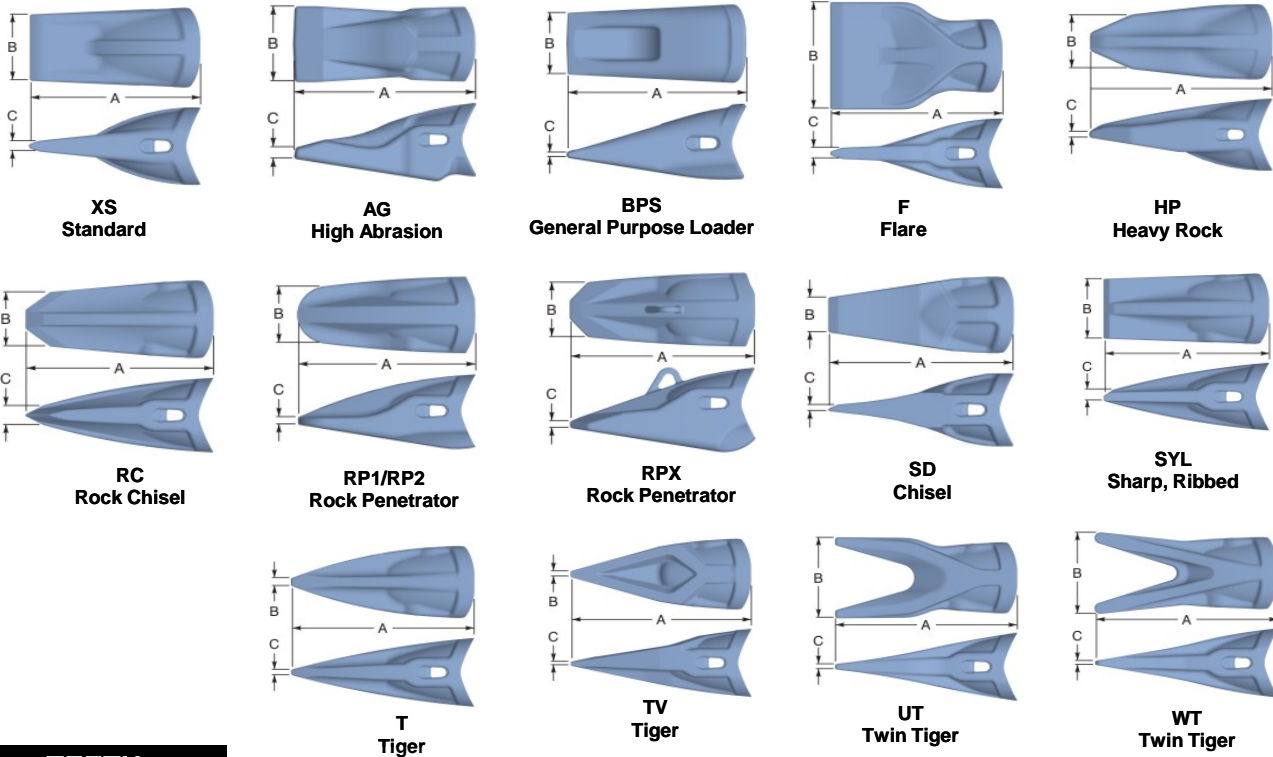
**SAFETY FIRST:** Hensley Industries, Inc. recommends that you use a soft-faced hammer **and** ANSI-approved (Z87.1) eye protection while using our products.  
 Copyright © 2010 Hensley Industries, Inc.

This publication is protected under the copyright laws of the United States. Unauthorized duplication or distribution is prohibited.



# 50 Series Specifications

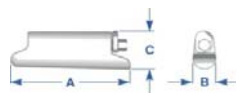
## Teeth & Fasteners



TEETH																
XS Series	Part Number	Pin Assembly	Dimensions										Weight			
			Overall Tooth					Tooth Pocket								
			A		B		C		D		E		F			
			"	mm	"	mm	"	mm	"	mm	"	mm	"	mm	lb	kg
50	XS50	XS50PC	12.7	322.6	5.2	132.1	0.8	20.3	6.5	165.0	4.7	119.0	4.9	124.5	33.1	15.0
	XS50AG		14.5	368.2	6.5	167.0	1.0	25.4	6.5	165.0	4.7	119.0	4.9	124.5	63.0	28.6
	XS50BPS		13.8	351.4	5.1	129.6	0.5	12.1	6.5	165.0	4.7	119.0	4.9	124.5	47.9	21.7
	XS50F		11.6	295.1	9.4	239.5	0.9	22.8	6.5	165.0	4.7	119.0	4.9	124.5	51.3	23.3
	XS50HP		14.6	369.0	4.7	120.0	0.9	23.0	6.5	165.0	4.5	113.4	4.9	124.5	42.2	19.1
	XS50RC		14.6	370.4	4.6	116.6	1.6	41.7	6.5	165.0	4.7	119.0	4.9	124.5	38.3	17.4
	XS50RP1		13.8	350.8	4.8	123.7	0.6	15.9	6.5	165.0	4.7	119.0	4.9	124.5	48.4	22.0
	XS50RP2		14.4	364.8	4.9	123.7	0.6	15.9	6.5	165.0	4.7	119.0	4.9	124.5	55.0	24.9
	XS50RPX		14.8	376.0	4.8	123.0	0.6	14.7	6.5	165.0	4.7	119.0	4.9	124.5	69.0	31.3
	XS50SD		14.4	366.1	2.9	75.4	0.1	2.8	6.5	165.0	4.7	119.0	4.9	124.5	38.3	17.4
	XS50SYL		13.9	352.2	5.5	139.6	0.8	20.8	6.5	165.0	4.7	119.0	4.9	124.5	38.2	17.3
	XS50T		15.1	383.1	0.7	17.1	0.5	12.4	6.5	165.0	4.7	119.0	4.9	124.5	33.5	15.2
	XS50TV		15.1	383.3	0.6	14.1	0.4	9.7	6.5	165.0	4.7	119.0	4.9	124.5	31.5	14.3
	XS50UT		15.1	383.1	7.3	186.3	0.5	12.5	6.5	165.0	4.5	113.4	4.9	124.5	32.5	14.7
XS50WT	15.1	383.1	7.3	186.4	0.4	9.1	6.5	165.0	4.7	119.0	4.9	124.5	33.8	15.3		

## FASTENERS

Duty Rating	Part Number	Dimensions						Weight		Socket	
		A		B		C		lb	kg	"	mm
		"	mm	"	mm	"	mm				
Heavy Duty	XS50PC	6.1	155.5	1.1	26.7	2.3	57.2	2.6	1.2	9/16	14.0
Slag*	XS50PS	6.1	155.6	1.1	26.7	2.3	57.2	2.6	1.2	9/16	14.0



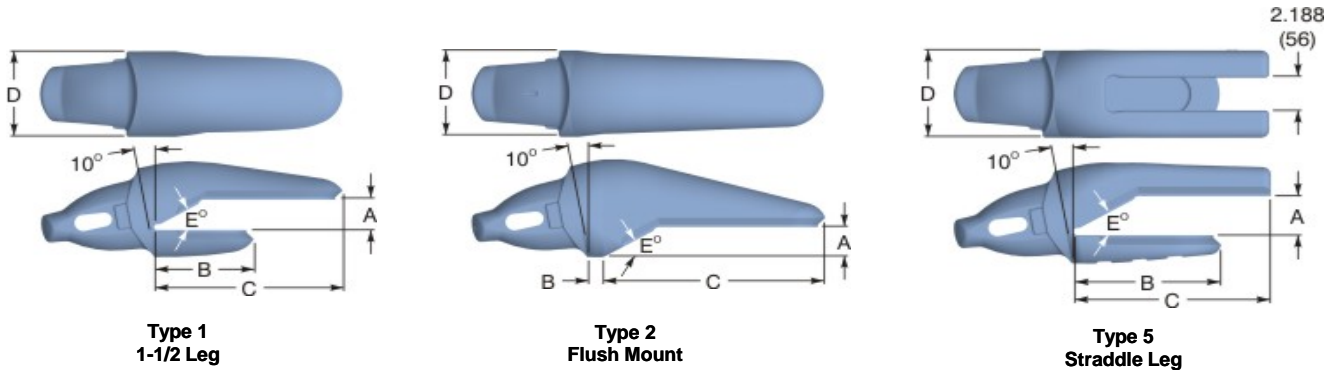
Tooth Pocket

\* Slag pin is NOT reusable



# 50 Series Specifications

## Weld-on Adapters



### ADAPTERS

XS Series	Part Number	Type	Dimensions												Weight		
			A		B		C		D		E	Spade Angle	Lip Thickness				
			"	mm	"	mm	"	mm	"	mm	Bevel		"	mm	lb	kg	
50	1060MXS50	1	2.5	62.3	6.3	159.1	11.8	300.3	5.8	148.3	30°	-	2.4	60.0	60.0	27.2	
	1060MXS50CC						9.0	228.0	5.8	148.0	10°	-	2.4	60.0	91.0	41.3	
	1065MXS50	1	2.7	67.4	6.3	158.6	11.8	299.8	5.8	148.3	30°	-	2.6	65.0	59.0	26.8	
	1200XS50*	1	2.1	53.1	6.3	158.6	11.8	300.6	5.8	148.3	30°	-	2.0	50.0	60.0	27.2	
	1200XS50L	1	2.1	53.0	6.8	171.0	12.5	318.0	5.8	148.0	30°	12°	2.0	50.0	71.7	32.5	
	1200XS50R	1	2.1	53.0	6.8	171.0	12.5	318.0	5.8	148.0	30°	12°	2.0	50.0	71.7	32.5	
	1250XS50*	1	2.6	65.8	6.3	158.6	11.8	299.8	5.8	148.3	30°	-	2.5	63.5	60.0	27.2	
	1250XS50L*	1	2.6	65.8	6.7	169.7	12.4	315.7	5.8	148.3	30°	12°	2.5	63.5	67.0	30.4	
	1250XS50R*	1	2.6	65.8	6.7	169.7	12.4	315.7	5.8	148.3	30°	12°	2.5	63.5	67.0	30.4	
	1250XS50SL	5	2.2	55.6				10.8	275.8	5.8	148.3	30°	-	2.5	63.5	102.5	46.5
	1275XS50*	1	2.8	72.2	6.3	159.4	11.8	299.8	5.8	148.3	30°	-	2.75	70.0	60.0	27.2	
	2050MXS50	2	2.0	51.5	1.0	25.4	13.7	347.4	5.8	148.3	30°	-	2.0	50.0	87.0	39.5	
	2060MXS50	2	2.4	60.3	1.0	25.4	13.9	352.2	5.8	148.3	30°	-	2.4	60.0	83.0	37.6	
	-	-	-	-	-	-	-	-	-	-	-	-	-	-	-	-	-
		XS50WN	Weld-on Nose	2.1	53.1	6.2	157.8	5.8	148.3								34.7
	U50HX	Wear Cap														3.7	1.7

\* Uses optional U50HX wear cap

Weld-on Nose



Authorized Dealer

**Hensley Industries, Inc.**  
 2108 Joe Field Road . Dallas, Texas 75229 U.S.A.  
**Customer Service**  
 888) 406 - 6262 U.S./Canada . (972) 406 - 6262 all other locations  
**Hensley Attachments**  
 A Division of Hensley Industries, Inc.  
 800 South Fifth . Mansfield, Texas 76063 U.S.A.  
 (800) 433 - 3144 . (817) 477 - 3167



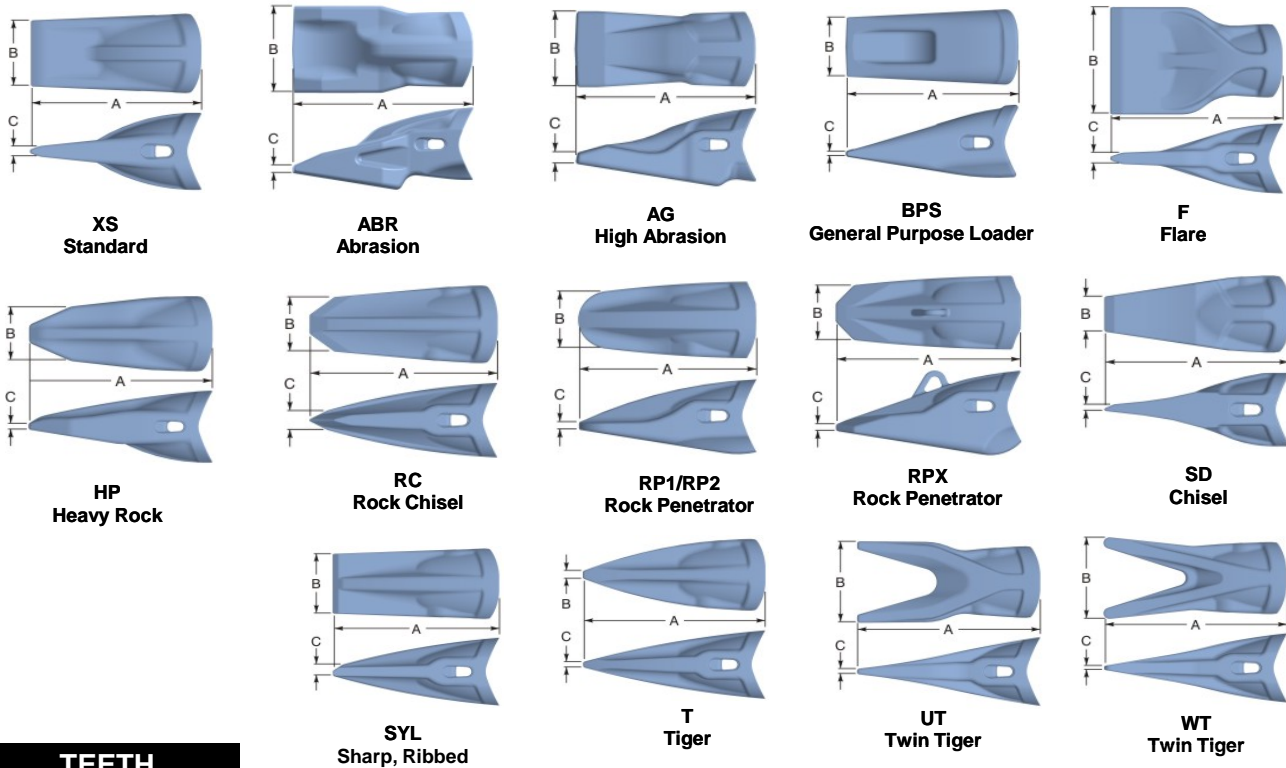
**SAFETY FIRST:** Hensley Industries, Inc. recommends that you use a soft-faced hammer **and** ANSI-approved (Z87.1) eye protection while using our products.  
 Copyright © 2010 Hensley Industries, Inc.

This publication is protected under the copyright laws of the United States. Unauthorized duplication or distribution is prohibited.

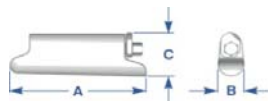


# 70 Series Specifications

## Teeth & Fasteners



TEETH		Pin Assembly	Dimensions											Weight		
XS Series	Part Number		Overall Tooth						Tooth Pocket							
			A		B		C		D		E		F			
			"	mm	"	mm	"	mm	"	mm	"	mm	"	mm	lb	kg
70	XS70	XS70PC	13.8	350.5	5.7	144.8	0.9	22.9	7.1	179.3	5.1	129.3	5.3	135.6	41.5	18.8
	XS70ABR		Under Development													
	XS70AG		15.6	396.2	7.1	180.3	1.8	45.7	7.1	179.3	5.1	129.3	5.3	135.6	77.0	34.9
	XS70BPS		12.4	315.9	5.5	140.8	0.5	13.2	7.1	179.3	5.1	129.3	5.3	135.6	62.0	28.1
	XS70F		14.8	374.4	10.2	258.6	1.0	24.7	7.1	179.3	5.1	129.3	5.3	135.6	63.0	28.6
	XS70HP		15.7	398.8	5.1	129.5	0.9	22.9	7.1	179.3	5.1	129.3	5.3	135.6	51.6	23.4
	XS70RC		15.8	399.7	5.0	126.1	1.8	45.1	7.1	179.3	5.1	129.3	5.3	135.6	46.1	20.9
	XS70RP1		15.0	381.0	4.8	121.8	0.6	16.3	7.1	179.3	5.1	129.3	5.3	135.6	54.0	24.5
	XS70RP2		15.6	395.0	5.3	133.8	0.7	17.2	7.1	179.3	5.1	129.3	5.3	135.6	69.0	31.3
	XS70RPX		16.0	406.1	5.2	132.6			7.1	179.3	5.1	129.3	5.3	135.6	86.0	39.0
	XS70SD		15.6	397.1	3.2	81.5	0.1	3.1	7.1	179.3	5.1	129.3	5.3	135.6	47.8	21.7
	XS70SYL		15.0	380.7	6.0	152.3	0.9	22.4	7.1	179.3	5.1	129.3	5.3	135.6	44.6	20.2
	XS70T		16.3	414.0	0.7	18.5	0.5	13.5	7.1	179.3	5.1	129.3	5.3	135.6	41.4	18.8
	XS70UT		16.3	414.2	7.9	201.4	0.5	13.5	7.1	179.3	5.1	129.3	5.3	135.6	44.6	20.2
XS70WT	16.3	414.0	7.9	201.5	0.4	9.9	7.1	179.3	5.1	129.3	5.3	135.6	43.7	19.8		



Tooth Pocket

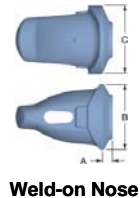
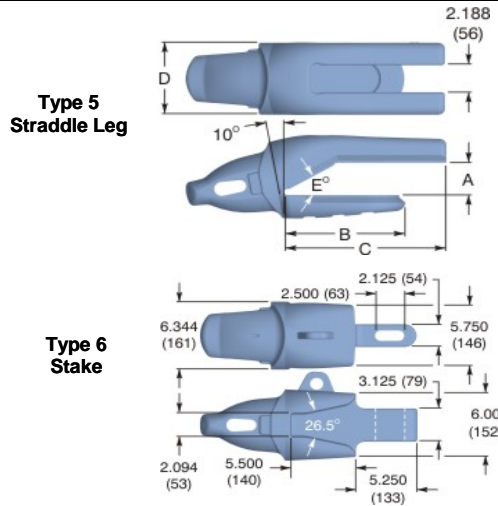
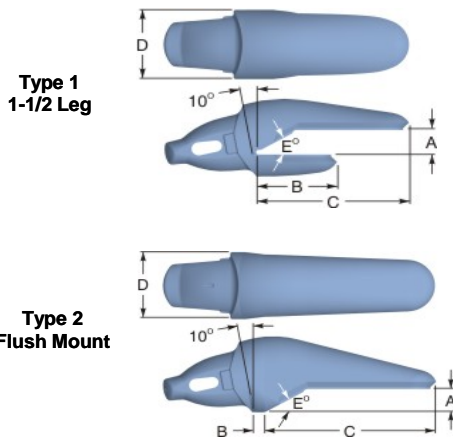
FASTENERS		Part Number	Dimensions						Weight		Socket	
Duty Rating	Pin Assembly		A		B		C		lb	kg	"	mm
			"	mm	"	mm	"	mm				
Heavy Duty	XS70PC	6.7	168.9	1.2	29.3	2.5	62.9	3.4	1.5	9/17	15.0	
Slag*	XS70PS	6.7	168.9	1.2	29.3	2.5	62.9	3.4	1.5	9/16	14.0	

\* Slag pin is NOT reusable



# 70 Series Specifications

## Weld-on Adapters



ADAPTERS		Dimensions													Weight		
XS Series	Part Number	Type	A		B		C		D		E	Spade Angle	Lip Thickness		lb	kg	
			"	mm	"	mm	"	mm	"	mm			Bevel	"			mm
70	1070MXS70	1	2.9	72.3	7.2	184.0	13.5	342.1	6.3	161.0	30°	-	2.75	70.0	81.0	36.7	
	1070MXS70CC		Under Development														
	1080MXS70	1	3.2	82.3	7.3	184.0	13.5	342.6	6.3	161.0	30°	-	3.1	80.0	78.0	35.4	
	1080MXS70L	1	3.2	82.3	7.3	184.0	13.5	342.6	6.3	161.0	30°	12°	3.1	80.0	84.0	38.1	
	1080MXS70R	1	3.2	82.3	7.3	184.0	13.5	342.6	6.3	161.0	30°	12°	3.1	80.0	84.0	38.1	
	1200XS70	1	2.1	53.1	7.0	177.7	13.4	339.5	6.3	161.0	30°	-	2.0	50.0	79.0	35.8	
	1250XS70*	1	2.6	65.8	7.0	177.7	13.3	337.9	6.3	161.0	30°	-	2.5	63.5	75.0	34.0	
	1250XS70L*	1	2.6	65.8	7.1	179.3	13.4	339.5	6.3	161.0	30°	12°	2.5	63.5	84.0	38.1	
	1250XS70R*	1	2.6	65.8	7.1	179.3	13.4	339.5	6.3	161.0	30°	12°	2.5	63.5	84.0	38.1	
	1250XS70SL	5	Under Development											2.5	63.5		
	1275XS70*	1	2.8	72.2	7.3	184.0	13.5	342.6	6.3	161.0	30°	-	2.75	70.0	81.0	36.7	
	1275XS70L*	1	2.8	72.2	7.5	190.4	13.8	349.0	6.3	161.0	30°	12°	2.75	70.0	86.0	39.0	
	1275XS70R*	1	2.8	72.2	7.5	190.4	13.8	349.0	6.3	161.0	30°	12°	2.75	70.0	86.0	39.0	
	1275XS70SL	5	Under Development											2.75	70.0		
	1300XS70*	1	3.1	78.5	7.3	184.0	13.5	342.6	6.3	161.0	30°	-	3.0	76.0	72.0	32.7	
	1300XS70SL	5	3.1	78.7		0.0		0.0	6.3	161.0	30°	-	3.0	76.0			
	158XS70	6	Shown above. Replaces Esco #157-55, Esco C-58 Cast Lip													80.0	36.3
	2065MXS70	2	2.7	67.4	1.0	25.4	15.0	380.7	6.3	161.0	30°	-	2.6	65.0	106.0	48.1	
	-	-	-	-	-	-	-	-	-	-	-	-	-	-	-	-	-
		XS70WN	Weld-on Nose	-	-	6.1	155.5	6.3	161.0							34.8	15.8
	U70HX	Wear Cap													5.9	2.7	

\* Uses optional U70HX wear cap

Authorized Dealer

**Hensley Industries, Inc.**  
 2108 Joe Field Road . Dallas, Texas 75229 U.S.A.  
**Customer Service**  
 888) 406 - 6262 U.S./Canada . (972) 406 - 6262 all other locations  
**Hensley Attachments**  
 A Division of Hensley Industries, Inc.  
 800 South Fifth . Mansfield, Texas 76063 U.S.A.  
 (800) 433 - 3144 . (817) 477 - 3167



**SAFETY FIRST:** Hensley Industries, Inc. recommends that you use a soft-faced hammer and ANSI-approved (Z87.1) eye protection while using our products.  
 Copyright © 2010 Hensley Industries, Inc.  
 This publication is protected under the copyright laws of the United States. Unauthorized duplication or distribution is prohibited.