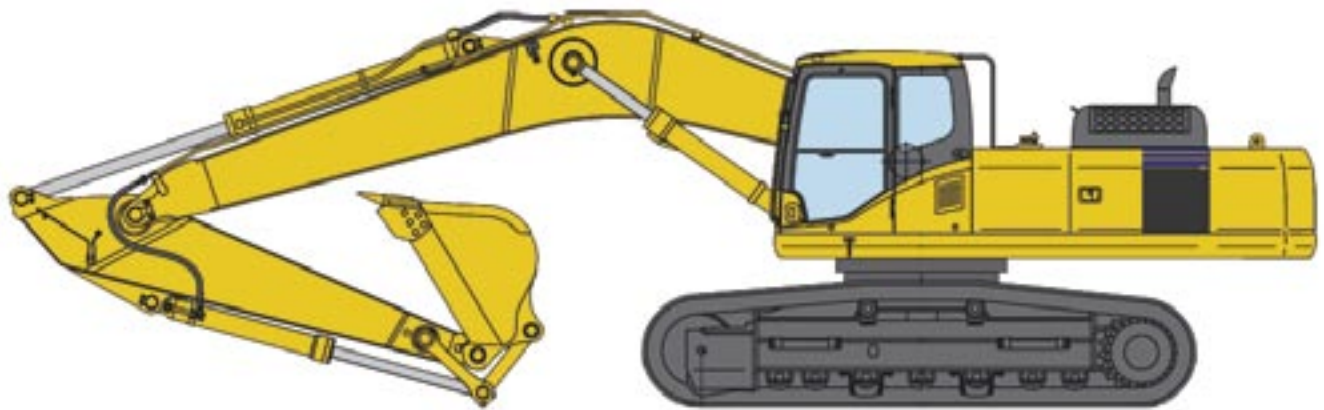




XS SYSTEMS

SERIES RECOMMENDATION CHARTS FOR EXCAVATORS



December 1, 2007



XS SYSTEM

SERIES RECOMMENDATION CHART FOR EXCAVATORS

MANUFACTURER	MODEL	OPERATING WEIGHT IN LBS.	RECOMMENDED NOSE SIZE BASED ON	
			APPLICATION	
			STANDARD / HEAVY DUTY	EXTREME SERVICE
AKERMAN	H3B	19,580	10 Series	15 Series
AKERMAN	H3	16,940	10 Series	15 Series
AKERMAN	H3MB	20,240	10 Series	15 Series
AKERMAN	H7MB	34,980	20 Series	20 Series
AKERMAN	H7MC	34,980	20 Series	20 Series
AKERMAN	H7C	37,180	20 Series	25 Series
AKERMAN	H9MB	38,500	20 Series	25 Series
AKERMAN	H9B	39,600	20 Series	25 Series
AKERMAN	H10M	40,920	20 Series	25 Series
AKERMAN	H10MB	43,780	20 Series	25 Series
AKERMAN	H10	45,980	20 Series	25 Series
AKERMAN	H10B	45,980	20 Series	25 Series
AKERMAN	EC230	48,840	25 Series	30 Series
AKERMAN	H12B	50,600	25 Series	30 Series
AKERMAN	H14B	63,800	25 Series	30 Series
AKERMAN	EC300	66,220	30 Series	40 Series
AKERMAN	H16C	82,500	30 Series	40 Series
AKERMAN	H16D	92,400	40 Series	50 Series
AKERMAN	EC420	94,600	40 Series	50 Series
AKERMAN	H25C	130,680	50 Series	70 Series
AKERMAN	H25D	131,780	50 Series	70 Series
ATLAS	120	2,640	04 Series	04 Series
ATLAS	404	3,080	04 Series	04 Series
ATLAS	250	5,720	04 Series	04 Series
ATLAS	350	6,600	04 Series	04 Series
ATLAS	360	7,260	04 Series	04 Series
ATLAS	804	8,360	04 Series	05 Series
ATLAS	1004	14,960	05 Series	10 Series
ATLAS	1102D	16,060	10 Series	10 Series
ATLAS	1122D	18,920	10 Series	15 Series
ATLAS	1252	19,800	10 Series	15 Series
ATLAS	1104	20,460	10 Series	15 Series
ATLAS	1202D	23,100	15 Series	15 Series
ATLAS	1204	25,300	15 Series	15 Series
ATLAS	1301E	28,600	15 Series	20 Series
ATLAS	1304	29,700	15 Series	20 Series
ATLAS	1204LC	29,810	15 Series	20 Series
ATLAS	1404	31,020	15 Series	20 Series

XS SYSTEM SERIES RECOMMENDATION CHART FOR EXCAVATORS

MANUFACTURER	MODEL	OPERATING WEIGHT IN LBS.	RECOMMENDED NOSE SIZE BASED ON	
			APPLICATION	
			STANDARD / HEAVY DUTY	EXTREME SERVICE
ATLAS	1302E	33,220	15 Series	20 Series
ATLAS	1304LC	34,540	20 Series	20 Series
ATLAS	1602E	34,760	20 Series	20 Series
ATLAS	1404LC	37,400	20 Series	25 Series
ATLAS	1604	37,620	20 Series	25 Series
ATLAS	1622D	40,920	20 Series	25 Series
ATLAS	1604LC	42,020	20 Series	25 Series
ATLAS	1704	43,340	20 Series	25 Series
ATLAS	1704LC	45,760	20 Series	25 Series
ATLAS	1702D	46,200	20 Series	25 Series
ATLAS	1802E	56,100	25 Series	30 Series
ATLAS	1804	56,320	25 Series	30 Series
ATLAS	1804LC	67,100	30 Series	40 Series
ATLAS	1902E	67,320	30 Series	40 Series
ATLAS	2004LC2	82,500	30 Series	40 Series
ATLAS	2202E	82,500	30 Series	40 Series
ATLAS	2204LC2	88,000	40 Series	50 Series
ATLAS	2502B	115,280	40 Series	70 Series
BADGER	666	43,200	20 Series	25 Series
BADGER	888	51,800	25 Series	30 Series
BARALDI	FB1.02	2,640	04 Series	04 Series
BARALDI	FB2.03	5,500	04 Series	04 Series
BENATI	3.07R	16,280	10 Series	10 Series
BENATI	3.07	18,040	10 Series	15 Series
BENATI	90CSB	25,740	15 Series	15 Series
BENATI	125RSB	27,500	15 Series	20 Series
BENATI	120CSB	29,700	15 Series	20 Series
BENATI	3.15	31,900	15 Series	20 Series
BENATI	3.15R	33,440	15 Series	20 Series
BENATI	145RSB	34,100	15 Series	20 Series
BENATI	140CSB	35,200	20 Series	20 Series
BENATI	3.18	38,940	20 Series	25 Series
BENATI	160CSB	40,700	20 Series	25 Series
BENATI	195RSB	42,900	20 Series	25 Series
BENATI	160HDB	45,100	20 Series	25 Series
BENATI	3.21	45,100	20 Series	25 Series
BENATI	190CSB	47,300	20 Series	25 Series
BENATI	230CSB	55,000	25 Series	30 Series

XS SYSTEM SERIES RECOMMENDATION CHART FOR EXCAVATORS

MANUFACTURER	MODEL	OPERATING WEIGHT IN LBS.	RECOMMENDED NOSE SIZE BASED ON	
			APPLICATION	
			STANDARD / HEAVY DUTY	EXTREME SERVICE
BENATI	3.28	59,400	25 Series	30 Series
BENATI	230HDB	61,600	25 Series	30 Series
BENATI	270CSB	66,000	30 Series	40 Series
BENATI	310HDB	75,680	30 Series	40 Series
BENATI	3.35	78,100	30 Series	40 Series
BENATI	370CSB	90,200	40 Series	50 Series
BENATI	450HDB	105,600	40 Series	50 Series
BENATI	525CSB	127,600	50 Series	70 Series
BENATI	610HDB	148,940	70 Series	85 Series
BENATI	910HDB	211,200	85 Series	115 Series
BENFRA	4Ch	19,800	10 Series	15 Series
BENFRA	4Rd	22,000	15 Series	15 Series
BENFRA	9.05	24,640	15 Series	15 Series
BENFRA	5Rd	26,400	15 Series	20 Series
BENFRA	9.06	27,280	15 Series	20 Series
BENFRA	6Ch	30,800	15 Series	20 Series
BENFRA	7Rd	30,800	15 Series	20 Series
BENFRA	9.07	36,740	20 Series	25 Series
BENFRA	9.08	41,140	20 Series	25 Series
BENFRA	8Ch	41,800	20 Series	25 Series
BENFRA	9.09	46,200	20 Series	25 Series
BENFRA	9.10	49,500	25 Series	30 Series
BENFRA	10Ch	52,800	25 Series	30 Series
BENFRA	9.11	59,620	25 Series	30 Series
BENFRA	9.12	67,100	30 Series	40 Series
BENFRA	12Ch	79,200	30 Series	40 Series
BOBCAT	316	1,676	04 Series	04 Series
BOBCAT	323-G	3,655	04 Series	04 Series
BOBCAT	325-G	6,145	04 Series	04 Series
BOBCAT	328-G	6,447	04 Series	04 Series
BOBCAT	331-G	7,185	04 Series	04 Series
BOBCAT	331E-G	7,728	04 Series	05 Series
BOBCAT	334-G	7,538	04 Series	05 Series
BOBCAT	430-G	8,024	04 Series	05 Series
BOBCAT	435-G	10,555	05 Series	05 Series
BOBCAT	337-G	11,085	05 Series	05 Series
BOBCAT	341-G	11,660	05 Series	05 Series
BOBCAT	442	16,538	10 Series	15 Series

XS SYSTEM

SERIES RECOMMENDATION CHART FOR EXCAVATORS

MANUFACTURER	MODEL	OPERATING WEIGHT IN LBS.	RECOMMENDED NOSE SIZE BASED ON	
			APPLICATION	
			STANDARD / HEAVY DUTY	EXTREME SERVICE
BROKK	40 (electric)	794	04 Series	04 Series
BROKK	90 (electric)	2,050	04 Series	04 Series
BROKK	180 (electric)	4,190	04 Series	04 Series
BROKK	330E (electric)	9,240	04 Series	05 Series
BROKK	330D (diesel)	9,600	04 Series	05 Series
BROYT	X21	27,500	15 Series	20 Series
BROYT	X31	46,420	20 Series	25 Series
BROYT	X41	71,500	30 Series	40 Series
BROYT	X42	88,000	40 Series	50 Series
BROYT	X45TB	94,600	40 Series	50 Series
BROYT	X50	99,000	40 Series	50 Series
BROYT	X43	102,300	40 Series	50 Series
BROYT	X52	112,200	40 Series	70 Series
Case	CX14	3,240	04 Series	04 Series
Case	CX25	5,556	04 Series	04 Series
Case	CX27B	5,556	04 Series	04 Series
Case	CX31B	6,679	04 Series	04 Series
Case	CX31	6,922	04 Series	04 Series
Case	CX36B	7,958	04 Series	05 Series
Case	CX36	8,046	04 Series	05 Series
Case	CX50B	10,261	05 Series	05 Series
Case	CX47	10,428	05 Series	05 Series
Case	CX75	16,933	10 Series	15 Series
Case	CX80	18,409	10 Series	15 Series
Case	CX130	27,057	15 Series	20 Series
Case	CX135	29,288	15 Series	20 Series
Case	CX160	36,226	20 Series	25 Series
Case	CX210	44,002	20 Series	25 Series
Case	CX210N	44,463	20 Series	25 Series
Case	CX210-LR*	47,584	20 Series	25 Series
Case	CX225	51,465	25 Series	30 Series
Case	CX240	53,240	25 Series	30 Series
Case	CX240-LR*	60,568	25 Series	30 Series
Case	CX290	64,725	25 Series	30 Series
Case	CX330	78,043	30 Series	40 Series
Case	CX330LR	90,294	40 Series	50 Series
Case	CX460	101,257	40 Series	50 Series
Case	CX700	153,300	70 Series	85 Series

XS SYSTEM SERIES RECOMMENDATION CHART FOR EXCAVATORS

MANUFACTURER	MODEL	OPERATING WEIGHT IN LBS.	RECOMMENDED NOSE SIZE BASED ON	
			APPLICATION	
			STANDARD / HEAVY DUTY	EXTREME SERVICE
Case	CX800	175,210	70 Series	85 Series
CASE CORP.	9010B	28,000	15 Series	20 Series
CASE CORP.	9020B	35,170	20 Series	20 Series
CASE CORP.	9030B	44,540	20 Series	25 Series
CASE CORP.	9040B	53,140	25 Series	30 Series
CASE CORP.	9050B	71,400	30 Series	40 Series
CASE CORP.	9060B	99,950	40 Series	50 Series
CATERPILLAR	301.6C	3,549	04 Series	04 Series
CATERPILLAR	301.5	3,688	04 Series	04 Series
CATERPILLAR	301.8C	3,703	04 Series	04 Series
CATERPILLAR	301.6	3,902	04 Series	04 Series
CATERPILLAR	301.8	3,968	04 Series	04 Series
CATERPILLAR	302.5	6,015	04 Series	04 Series
CATERPILLAR	302.5C	6,052	04 Series	04 Series
CATERPILLAR	303CR	7,050	04 Series	04 Series
CATERPILLAR	303C CR	7575	04 Series	05 Series
CATERPILLAR	303.5	7,810	04 Series	05 Series
CATERPILLAR	303.5C CR	8,355	04 Series	05 Series
CATERPILLAR	304.5	10,130	05 Series	05 Series
CATERPILLAR	305CR	10,580	05 Series	05 Series
CATERPILLAR	304C CR	10,582	05 Series	05 Series
CATERPILLAR	305C CR	11,465	05 Series	05 Series
CATERPILLAR	307C	15,900	10 Series	10 Series
CATERPILLAR	E70B	16,060	10 Series	10 Series
CATERPILLAR	307	16,830	10 Series	15 Series
CATERPILLAR	308C CR	17,730	10 Series	15 Series
CATERPILLAR	307C SB	18,500	10 Series	15 Series
CATERPILLAR	E110B	25,080	15 Series	15 Series
CATERPILLAR	311	25,100	15 Series	15 Series
CATERPILLAR	206	26,400	15 Series	20 Series
CATERPILLAR	311C U	26,410	15 Series	20 Series
CATERPILLAR	E120B	27,940	15 Series	20 Series
CATERPILLAR	205LC	28,490	15 Series	20 Series
CATERPILLAR	312	28,556	15 Series	20 Series
CATERPILLAR	M312	28,556	15 Series	20 Series
CATERPILLAR	206B	29,480	15 Series	20 Series
CATERPILLAR	312C L	28,970	15 Series	20 Series
CATERPILLAR	212	30,140	15 Series	20 Series

XS SYSTEM

SERIES RECOMMENDATION CHART FOR EXCAVATORS

MANUFACTURER	MODEL	OPERATING WEIGHT IN LBS.	RECOMMENDED NOSE SIZE BASED ON	
			APPLICATION	
			STANDARD / HEAVY DUTY	EXTREME SERVICE
CATERPILLAR	M312*	30,450	15 Series	20 Series
CATERPILLAR	M313C (wheeled)	30,860	15 Series	20 Series
CATERPILLAR	314C LCR	32,590	15 Series	20 Series
CATERPILLAR	212B	31,900	15 Series	20 Series
CATERPILLAR	211	32,560	15 Series	20 Series
CATERPILLAR	211LC	33,880	15 Series	20 Series
CATERPILLAR	214	34,100	15 Series	20 Series
CATERPILLAR	M315*	34,690	20 Series	20 Series
CATERPILLAR	315	34,980	20 Series	20 Series
CATERPILLAR	215BLC	35,200	20 Series	20 Series
CATERPILLAR	215CLC	35,200	20 Series	20 Series
CATERPILLAR	213	35,420	20 Series	20 Series
CATERPILLAR	M315C (wheeled)	35,610	20 Series	20 Series
CATERPILLAR	M315	35,860	20 Series	25 Series
CATERPILLAR	315C L	36,930	20 Series	25 Series
CATERPILLAR	213LC	38,060	20 Series	25 Series
CATERPILLAR	214B	38,060	20 Series	25 Series
CATERPILLAR	M316C*	38,260	20 Series	25 Series
CATERPILLAR	215B	39,028	20 Series	25 Series
CATERPILLAR	213BLC	39,490	20 Series	25 Series
CATERPILLAR	317	39,600	20 Series	25 Series
CATERPILLAR	M318	39,600	20 Series	25 Series
CATERPILLAR	M318C*	42,220	20 Series	25 Series
CATERPILLAR	224	41,800	20 Series	25 Series
CATERPILLAR	215	42,240	20 Series	25 Series
CATERPILLAR	318C L	43,320	20 Series	25 Series
CATERPILLAR	320	42,900	20 Series	25 Series
CATERPILLAR	219	45,320	20 Series	25 Series
CATERPILLAR	320L	45,892	20 Series	25 Series
CATERPILLAR	320N	45,892	20 Series	25 Series
CATERPILLAR	215DLC	46,200	20 Series	25 Series
CATERPILLAR	320C L	46,300	20 Series	25 Series
CATERPILLAR	224B	47,740	25 Series	25 Series
CATERPILLAR	M322C*	48,940	25 Series	30 Series
CATERPILLAR	219D	48,400	25 Series	25 Series
CATERPILLAR	320C L U	50,715	25 Series	30 Series
CATERPILLAR	322N	51,282	25 Series	30 Series
CATERPILLAR	225	52,360	25 Series	30 Series

XS SYSTEM SERIES RECOMMENDATION CHART FOR EXCAVATORS

MANUFACTURER	MODEL	OPERATING WEIGHT IN LBS.	RECOMMENDED NOSE SIZE BASED ON	
			APPLICATION	
			STANDARD / HEAVY DUTY	EXTREME SERVICE
CATERPILLAR	322L	52,800	25 Series	30 Series
CATERPILLAR	321C LCR	52,910	25 Series	30 Series
CATERPILLAR	322C L	53,400	25 Series	30 Series
CATERPILLAR	324D L	52,602	25 Series	30 Series
CATERPILLAR	325B	57,100	25 Series	30 Series
CATERPILLAR	225B	57,200	25 Series	30 Series
CATERPILLAR	225D	59,400	25 Series	30 Series
CATERPILLAR	325L	60,500	25 Series	30 Series
CATERPILLAR	325C L	63,100	25 Series	30 Series
CATERPILLAR	325D L	64,460	25 Series	30 Series
CATERPILLAR	229	66,440	30 Series	40 Series
CATERPILLAR	229D	70,400	30 Series	40 Series
CATERPILLAR	330	70,830	30 Series	40 Series
CATERPILLAR	330L	74,580	30 Series	40 Series
CATERPILLAR	330C L	77,400	30 Series	40 Series
CATERPILLAR	330D L	79,700	30 Series	40 Series
CATERPILLAR	235	86,460	30 Series	40 Series
CATERPILLAR	235B	88,000	40 Series	50 Series
CATERPILLAR	345B L II	99,900	40 Series	50 Series
CATERPILLAR	235C	101,200	40 Series	50 Series
CATERPILLAR	345C L	102,960	40 Series	50 Series
CATERPILLAR	350	104,390	40 Series	50 Series
CATERPILLAR	350L	111,100	40 Series	50 Series
CATERPILLAR	245B	129,580	50 Series	70 Series
CATERPILLAR	365C L	145,430	50 Series	70 Series
CATERPILLAR	365B L II	145,700	50 Series	70 Series
CATERPILLAR	375	166,380	70 Series	85 Series
CATERPILLAR	375L	177,100	70 Series	85 Series
CATERPILLAR	385C L	182,800	70 Series	85 Series
CATERPILLAR	385B	183,900	70 Series	85 Series
CATERPILLAR	385B L	190,370	70 Series	85 Series
CATERPILLAR	5090B FS	201,900	85 Series	115 Series
CATERPILLAR	5110B	275,000	115 Series	115 Series
CATERPILLAR	5110B ME	275,000	115 Series	115 Series
CATERPILLAR	5130B FS	399,000	115 Series	145 Series
CATERPILLAR	5130B ME	401,000	115 Series	145 Series
CATERPILLAR	5230B FS	721,000	XS340	XS390
CATERPILLAR	5230B ME	723,400	XS340	XS390

XS SYSTEM

SERIES RECOMMENDATION CHART FOR EXCAVATORS

MANUFACTURER	MODEL	OPERATING WEIGHT IN LBS.	RECOMMENDED NOSE SIZE BASED ON	
			APPLICATION	
			STANDARD / HEAVY DUTY	EXTREME SERVICE
COYOTE	CE08	1,676	04 Series	04 Series
COYOTE	CE15	3,150	04 Series	04 Series
COYOTE	CE25	6,084	04 Series	04 Series
COYOTE	CE35	7,326	04 Series	05 Series
COYOTE	CE55	11,794	05 Series	10 Series
COYOTE	CE75	16,600	10 Series	15 Series
DAEWOO	Solar10	1,697	04 Series	04 Series
DAEWOO	Solar15	3,351	04 Series	04 Series
DAEWOO	DH30	5,632	04 Series	04 Series
DAEWOO	Solar30	6,261	04 Series	04 Series
DAEWOO	Solar35	7,231	04 Series	04 Series
DAEWOO	DH50W	9,900	05 Series	05 Series
DAEWOO	DH040	10,340	05 Series	05 Series
DAEWOO	DH50	10,780	05 Series	05 Series
DAEWOO	Solar55V PLUS	12,125	05 Series	10 Series
DAEWOO	Solar70-III	14,991	05 Series	10 Series
DAEWOO	DH80W	16,500	10 Series	15 Series
DAEWOO	DH110	24,640	15 Series	15 Series
DAEWOO	DH120W	25,300	15 Series	15 Series
DAEWOO	S130W-3	26,276	15 Series	20 Series
DAEWOO	DH120	26,620	15 Series	20 Series
DAEWOO	DH130W	27,280	15 Series	20 Series
DAEWOO	DH130	28,380	15 Series	20 Series
DAEWOO	Solar140WV*	28,800	15 Series	20 Series
DAEWOO	DH130-2	29,260	15 Series	20 Series
DAEWOO	S130-3	29,542	15 Series	20 Series
DAEWOO	Solar130LC-V	30,600	15 Series	20 Series
DAEWOO	DH170	37,620	20 Series	25 Series
DAEWOO	DH170-2	37,700	20 Series	25 Series
DAEWOO	S170W-3	38,147	20 Series	25 Series
DAEWOO	Solar175LCV	38,800	20 Series	25 Series
DAEWOO	Solar180WV*	39,021	20 Series	25 Series
DAEWOO	DH180	41,140	20 Series	25 Series
DAEWOO	DH220W	42,460	20 Series	25 Series
DAEWOO	S200W-3	42,770	20 Series	25 Series
DAEWOO	DH180LC	44,220	20 Series	25 Series
DAEWOO	DH200LC	44,220	20 Series	25 Series
DAEWOO	Solar210WV*	45,304	20 Series	25 Series

XS SYSTEM SERIES RECOMMENDATION CHART FOR EXCAVATORS

MANUFACTURER	MODEL	OPERATING WEIGHT IN LBS.	RECOMMENDED NOSE SIZE BASED ON	
			APPLICATION	
			STANDARD / HEAVY DUTY	EXTREME SERVICE
DAEWOO	DH220	46,200	20 Series	25 Series
DAEWOO	S220LC-3	46,788	20 Series	25 Series
DAEWOO	Solar225LCV	47,400	20 Series	25 Series
DAEWOO	Solar255LCV	54,200	25 Series	30 Series
DAEWOO	DH280	62,040	25 Series	30 Series
DAEWOO	S280LC-3	63,714	25 Series	30 Series
DAEWOO	Solar300LCV	67,400	30 Series	40 Series
DAEWOO	DH320	69,300	30 Series	40 Series
DAEWOO	Solar340LCV	76,500	30 Series	40 Series
DAEWOO	S400LC-3	84,892	30 Series	40 Series
DAEWOO	Solar420LCV	92,800	40 Series	50 Series
DAEWOO	DH450	99,000	40 Series	50 Series
DAEWOO	Solar470LCV	103,400	40 Series	50 Series
DEMAG	H30	66,000	30 Series	40 Series
DEMAG	H40	85,800	30 Series	40 Series
DEMAG	H45	99,000	40 Series	50 Series
DEMAG	H55N	121,000	50 Series	70 Series
DEMAG	H65	147,400	50 Series	85 Series
DEMAG	H85	204,600	85 Series	115 Series
DEMAG	H95	204,600	85 Series	115 Series
DEMAG	H121	259,600	85 Series	115 Series
DEMAG	H135S	290,400	115 Series	115 Series
DEMAG	H185	475,200	145 Series	250 Series
DEMAG	H185S	475,200	145 Series	250 Series
DEMAG	H241 BH	585,200	250 Series	XS340
DEMAG	H241 FS	616,000	250 Series	XS340
DEMAG	H285	651,200	250 Series	XS340
DEMAG	H285S BH	715,000	250 Series	XS340
DEMAG	H285S FS	715,000	XS340	XS390
DEMAG	H485S	1,375,000	XS640	XS800
Ditch Witch	MX9	1,960	04 Series	04 Series
Ditch Witch	MX15	3,980	04 Series	04 Series
Ditch Witch	MX182	4,090	04 Series	04 Series
Ditch Witch	MX202	5,060	04 Series	04 Series
Ditch Witch	MX272	6,590	04 Series	04 Series
Ditch Witch	MX27	6,605	04 Series	04 Series
Ditch Witch	MX352	8,245	04 Series	04 Series
Ditch Witch	MX35	8,300	04 Series	04 Series

XS SYSTEM

SERIES RECOMMENDATION CHART FOR EXCAVATORS

MANUFACTURER	MODEL	OPERATING WEIGHT IN LBS.	RECOMMENDED NOSE SIZE BASED ON	
			APPLICATION	
			STANDARD / HEAVY DUTY	EXTREME SERVICE
Ditch Witch	MX45	10,300	05 Series	05 Series
Ditch Witch	MX502	11,110	05 Series	05 Series
DOOSAN	Solar 101	1,697	04 Series	04 Series
DOOSAN	Solar 015	3,351	04 Series	04 Series
DOOSAN	Solar 030	6,261	04 Series	04 Series
DOOSAN	Solar 035	7,231	04 Series	04 Series
DOOSAN	Solar 55V Plus	12,125	05 Series	10 Series
DOOSAN	Solar 75V	17,643	10 Series	15 Series
DOOSAN	Solar 140WV (wheeled)	28,800	15 Series	20 Series
DOOSAN	Solar 140LCV	30,600	15 Series	20 Series
DOOSAN	Solar 175LCV	38,800	20 Series	25 Series
DOOSAN	Solar 180WV (wheeled)	39,021	20 Series	25 Series
DOOSAN	Solar 210WV (wheeled)	45,304	20 Series	25 Series
DOOSAN	Solar 225LCV	47,400	20 Series	25 Series
DOOSAN	Solar 255LCV	54,200	25 Series	30 Series
DOOSAN	DX300	64,595	25 Series	30 Series
DOOSAN	Solar 300LCV	67,400	30 Series	40 Series
DOOSAN	DX340	75,177	30 Series	40 Series
DOOSAN	Solar 340LCV	76,500	30 Series	40 Series
DOOSAN	DX420	90,170	40 Series	50 Series
DOOSAN	Solar 420LCV	92,800	40 Series	50 Series
DOOSAN	Solar 470LCV	103,400	40 Series	50 Series
DOOSAN	DX480	104,700	40 Series	50 Series
EDER	M805	26,400	15 Series	20 Series
EDER	R805	29,700	15 Series	20 Series
EDER	M815	30,800	15 Series	20 Series
EDER	R815	33,000	15 Series	20 Series
EDER	M825	36,300	20 Series	25 Series
EDER	R825	36,300	20 Series	25 Series
EDER	M825B	37,840	20 Series	25 Series
EDER	M835	44,000	20 Series	25 Series
EDER	R835	46,200	20 Series	25 Series
FAI	212	2,860	04 Series	04 Series
FAI	214	5,060	04 Series	04 Series
FAI	222	5,060	04 Series	04 Series
FAI	750C Super	24,640	15 Series	15 Series
FAI	900CH	26,400	15 Series	20 Series
FAI	900GTV	27,500	15 Series	20 Series

XS SYSTEM

SERIES RECOMMENDATION CHART FOR EXCAVATORS

MANUFACTURER	MODEL	OPERATING WEIGHT IN LBS.	RECOMMENDED NOSE SIZE BASED ON	
			APPLICATION	
			STANDARD / HEAVY DUTY	EXTREME SERVICE
FAI	900CS	27,940	15 Series	20 Series
FAI	1000GTH	35,200	20 Series	20 Series
FAI	1000GTV	35,200	20 Series	20 Series
FAI	900GTH	35,200	20 Series	20 Series
FAI	1000CH turbo	36,740	20 Series	25 Series
FAI	1100GTV	39,380	20 Series	25 Series
FAI	1300C	42,460	20 Series	25 Series
FAI	1400C	47,960	25 Series	25 Series
FAI	1600C	55,000	25 Series	30 Series
FAUN FRISCH	FM1014	25,740	15 Series	15 Series
FAUN FRISCH	FM1015	25,740	15 Series	15 Series
FAUN FRISCH	FM1024	31,020	15 Series	20 Series
FAUN FRISCH	FM1024LC	31,020	15 Series	20 Series
FAUN FRISCH	FM1035	37,620	20 Series	25 Series
FAUN FRISCH	FR1035LC	42,900	20 Series	25 Series
FIAT-ALLIS	FE12R	27,940	15 Series	20 Series
FIAT-ALLIS	FE12L	28,600	15 Series	20 Series
FIAT-ALLIS	FX130LC	29,260	15 Series	20 Series
FIAT-ALLIS	FE12LC	29,810	15 Series	20 Series
FIAT-ALLIS	FE12RM	29,810	15 Series	20 Series
FIAT-ALLIS	FE14	30,800	15 Series	20 Series
FIAT-ALLIS	FE16	34,760	20 Series	20 Series
FIAT-ALLIS	FE18R	37,180	20 Series	25 Series
FIAT-ALLIS	FE18	37,730	20 Series	25 Series
FIAT-ALLIS	FE18RM	38,720	20 Series	25 Series
FIAT-ALLIS	FE18LC	39,974	20 Series	25 Series
FIAT-ALLIS	FE20	42,570	20 Series	25 Series
FIAT-ALLIS	FX210LC	44,000	20 Series	25 Series
FIAT-ALLIS	FE20LC	45,496	20 Series	25 Series
FIAT-ALLIS	FE20HD	47,278	20 Series	25 Series
FIAT-ALLIS	FE24	51,612	25 Series	30 Series
FIAT-ALLIS	FX250LC	55,000	25 Series	30 Series
FIAT-ALLIS	FE28	59,180	25 Series	30 Series
FIAT-ALLIS	FE28HD	60,500	25 Series	30 Series
FIAT-ALLIS	FE28LC	62,260	25 Series	30 Series
FIAT-ALLIS	FX310LC	70,400	30 Series	40 Series
FIAT-ALLIS	FE40L	97,460	40 Series	50 Series
FIAT-ALLIS	FE45	99,440	40 Series	50 Series

XS SYSTEM SERIES RECOMMENDATION CHART FOR EXCAVATORS

MANUFACTURER	MODEL	OPERATING WEIGHT IN LBS.	RECOMMENDED NOSE SIZE BASED ON	
			APPLICATION	
			STANDARD / HEAVY DUTY	EXTREME SERVICE
FIAT-ALLIS	FE45 turbo	99,440	40 Series	50 Series
FIAT-ALLIS	FE40LFS	99,880	40 Series	50 Series
FIAT-HITACHI	FH65W	13,420	05 Series	10 Series
FIAT-HITACHI	FH85W	18,920	10 Series	15 Series
FIAT-HITACHI	FH115W	25,520	15 Series	15 Series
FIAT-HITACHI	FH120	27,720	15 Series	20 Series
FIAT-HITACHI	FH150W	32,560	15 Series	20 Series
FIAT-HITACHI	FH150	33,000	15 Series	20 Series
FIAT-HITACHI	FH200	42,460	20 Series	25 Series
FIAT-HITACHI	FH220	51,480	25 Series	30 Series
FIAT-HITACHI	FH300	63,800	25 Series	30 Series
FIAT-HITACHI	FH400	96,580	40 Series	50 Series
FUCHS	712M	25,300	15 Series	15 Series
FUCHS	720M	26,400	15 Series	20 Series
FUCHS	722M	27,500	15 Series	20 Series
FUCHS	713M	29,040	15 Series	20 Series
FUCHS	714M	34,320	15 Series	20 Series
FUCHS	713R	37,840	20 Series	25 Series
FUCHS	714R	42,460	20 Series	25 Series
FURUKAWA	620	26,620	15 Series	20 Series
FURUKAWA	620W	26,840	15 Series	20 Series
FURUKAWA	725LS	28,600	15 Series	20 Series
FURUKAWA	W625E	28,600	15 Series	20 Series
FURUKAWA	W725LS	28,600	15 Series	20 Series
FURUKAWA	W630E	30,800	15 Series	20 Series
FURUKAWA	625E	31,900	15 Series	20 Series
FURUKAWA	W730LS	32,120	15 Series	20 Series
FURUKAWA	630E	33,220	15 Series	20 Series
FURUKAWA	635W	34,100	15 Series	20 Series
FURUKAWA	730LS	34,320	15 Series	20 Series
FURUKAWA	W735LS	35,090	20 Series	20 Series
FURUKAWA	W635E	35,640	20 Series	20 Series
FURUKAWA	635E	37,180	20 Series	25 Series
FURUKAWA	635	37,400	20 Series	25 Series
FURUKAWA	635B	37,400	20 Series	25 Series
FURUKAWA	735LS	38,280	20 Series	25 Series
FURUKAWA	640B	46,860	20 Series	25 Series
FURUKAWA	645	48,400	25 Series	25 Series

XS SYSTEM

SERIES RECOMMENDATION CHART FOR EXCAVATORS

MANUFACTURER	MODEL	OPERATING WEIGHT IN LBS.	RECOMMENDED NOSE SIZE BASED ON	
			APPLICATION	
			STANDARD / HEAVY DUTY	EXTREME SERVICE
FURUKAWA	640E	55,000	25 Series	30 Series
FURUKAWA	645E	63,800	25 Series	30 Series
FURUKAWA	650	69,960	30 Series	40 Series
FURUKAWA	650B	70,400	30 Series	40 Series
FURUKAWA	650E	78,540	30 Series	40 Series
GEHL	MB138	3,036	04 Series	04 Series
GEHL	MB168	3,036	04 Series	04 Series
GEHL	MB145	3,080	04 Series	04 Series
GEHL	153	3,759	04 Series	04 Series
GEHL	223	4,447	04 Series	04 Series
GEHL	303	6,875	04 Series	04 Series
GEHL	353	7,715	04 Series	05 Series
GEHL	373	8,215	04 Series	05 Series
GEHL	MB445M	9,240	04 Series	05 Series
GEHL	503Z	10,582	05 Series	05 Series
GEHL	603	12,566	05 Series	10 Series
GEHL	753Z	19,193	10 Series	15 Series
GEHL	803	17,548	10 Series	15 Series
GEHL	1202	25,397	15 Series	15 Series
GRADALL	XL2200	25,000	15 Series	15 Series
GRADALL	XL 3200	34,660	20 Series	20 Series
GRADALL	XL 3300 (wheeled)	36,970	20 Series	25 Series
GRADALL	XL 3100 (wheeled)	37,100	20 Series	25 Series
GRADALL	XL 4200II	42,050	20 Series	25 Series
GRADALL	XL 4300II (wheeled)	44,260	20 Series	25 Series
GRADALL	XL4200	44,320	20 Series	25 Series
GRADALL	XL4100 (wheeled)	44,851	20 Series	25 Series
GRADALL	XL 4100II (wheeled)	46,600	20 Series	25 Series
GRADALL	XL5200	53,800	25 Series	30 Series
GRADALL	XL5100	55,275	25 Series	30 Series
GURIA	513	31,680	15 Series	20 Series
GURIA	516	38,500	20 Series	25 Series
GURIA	519	41,800	20 Series	25 Series
GURIA	520B	44,000	20 Series	25 Series
GURIA	520C	44,000	20 Series	25 Series
GURIA	522	47,300	20 Series	25 Series
GURIA	521B	48,400	25 Series	25 Series
GURIA	521C	48,400	25 Series	25 Series

XS SYSTEM SERIES RECOMMENDATION CHART FOR EXCAVATORS

MANUFACTURER	MODEL	OPERATING WEIGHT IN LBS.	RECOMMENDED NOSE SIZE BASED ON	
			APPLICATION	
			STANDARD / HEAVY DUTY	EXTREME SERVICE
GURIA	521D	48,400	25 Series	25 Series
GURIA	523	50,600	25 Series	30 Series
GURIA	527B	59,400	25 Series	30 Series
GURIA	529	61,600	25 Series	30 Series
GURIA	529B	66,000	30 Series	40 Series
GURIA	545	103,400	40 Series	50 Series
GURIA	545HD	103,400	40 Series	50 Series
GURIA	547	103,400	40 Series	50 Series
HANIX	N1502	2,860	04 Series	04 Series
HANIX	N2602	5,500	04 Series	04 Series
HANIX	N3002	6,160	04 Series	04 Series
HANOMAG	W350D	27,720	15 Series	20 Series
HANOMAG	HW130	29,920	15 Series	20 Series
HANOMAG	W450E	29,920	15 Series	20 Series
HANOMAG	HC150	31,900	15 Series	20 Series
HANOMAG	HW160	33,440	15 Series	20 Series
HANOMAG	450E	35,640	20 Series	20 Series
HANOMAG	HC170	38,280	20 Series	25 Series
HANOMAG	HC180	39,380	20 Series	25 Series
HANOMAG	HW180	40,040	20 Series	25 Series
HANOMAG	HC190	41,800	20 Series	25 Series
HANOMAG	W201	43,120	20 Series	25 Series
HANOMAG	HW200	44,000	20 Series	25 Series
HANOMAG	201	45,980	20 Series	25 Series
HANOMAG	201LC	45,980	20 Series	25 Series
HANOMAG	HC220	48,400	25 Series	25 Series
HANOMAG	HC260	56,760	25 Series	30 Series
HANOMAG	HC280	61,600	25 Series	30 Series
HITACHI	UE10	2,640	04 Series	04 Series
HITACHI	UE15	3,080	04 Series	04 Series
HITACHI	UE20	5,060	04 Series	04 Series
HITACHI	Zaxis27U	6,261	04 Series	04 Series
HITACHI	UE30	6,380	04 Series	04 Series
HITACHI	Zaxis 27U-2	6,393	04 Series	04 Series
HITACHI	UE40	7,260	04 Series	04 Series
HITACHI	Zaxis35U	7,694	04 Series	05 Series
HITACHI	Zaxis50U	10,119	05 Series	05 Series
HITACHI	UE50	13,200	05 Series	10 Series

XS SYSTEM SERIES RECOMMENDATION CHART FOR EXCAVATORS

MANUFACTURER	MODEL	OPERATING WEIGHT IN LBS.	RECOMMENDED NOSE SIZE BASED ON	
			APPLICATION	
			STANDARD / HEAVY DUTY	EXTREME SERVICE
HITACHI	EX60	13,860	05 Series	10 Series
HITACHI	EX60WD	14,740	05 Series	10 Series
HITACHI	UH031	14,960	05 Series	10 Series
HITACHI	UH033	14,960	05 Series	10 Series
HITACHI	Zaxis80 w/blade	15,905	10 Series	10 Series
HITACHI	EX90	16,720	10 Series	15 Series
HITACHI	Zaxis 75 US	17,714	10 Series	15 Series
HITACHI	Zaxis80 w/blade & offset Boo	19,910	10 Series	15 Series
HITACHI	UH043	21,560	10 Series	15 Series
HITACHI	EX100	22,000	15 Series	15 Series
HITACHI	EX100W	22,880	15 Series	15 Series
HITACHI	EX100WD	22,880	15 Series	15 Series
HITACHI	WH051D	23,100	15 Series	15 Series
HITACHI	UH051D	23,540	15 Series	15 Series
HITACHI	UH052	24,640	15 Series	15 Series
HITACHI	EX120	25,960	15 Series	20 Series
HITACHI	UH063	26,180	15 Series	20 Series
HITACHI	UH062	27,060	15 Series	20 Series
HITACHI	Zaxis120	27,600	15 Series	20 Series
HITACHI	UH052M	27,940	15 Series	20 Series
HITACHI	UH053	29,260	15 Series	20 Series
HITACHI	Zaxis135US	30,440	15 Series	20 Series
HITACHI	EX150	31,900	15 Series	20 Series
HITACHI	WH073	31,900	15 Series	20 Series
HITACHI	EX160W	33,440	15 Series	20 Series
HITACHI	UH071	34,540	20 Series	20 Series
HITACHI	Zaxis160LC	35,500	20 Series	20 Series
HITACHI	UH073	36,080	20 Series	25 Series
HITACHI	EX200	40,700	20 Series	25 Series
HITACHI	UH081	40,700	20 Series	25 Series
HITACHI	UH083	40,700	20 Series	25 Series
HITACHI	EX200LC	44,973	20 Series	25 Series
HITACHI	UH123	45,760	20 Series	25 Series
HITACHI	EX220	49,500	25 Series	30 Series
HITACHI	UH101	49,500	25 Series	30 Series
HITACHI	UH103	49,500	25 Series	30 Series
HITACHI	EX220LC	52,500	25 Series	30 Series
HITACHI	Zaxis225USLC	53,200	25 Series	30 Series

XS SYSTEM

SERIES RECOMMENDATION CHART FOR EXCAVATORS

MANUFACTURER	MODEL	OPERATING WEIGHT IN LBS.	RECOMMENDED NOSE SIZE BASED ON	
			APPLICATION	
			STANDARD / HEAVY DUTY	EXTREME SERVICE
HITACHI	Zaxis230LC	53,600	25 Series	30 Series
HITACHI	Zaxis 240LC-3	54,654	25 Series	30 Series
HITACHI	UH121	57,200	25 Series	30 Series
HITACHI	UH122	57,200	25 Series	30 Series
HITACHI	EX270LC	60,600	25 Series	30 Series
HITACHI	EX270	60,720	25 Series	30 Series
HITACHI	UH121LC	60,940	25 Series	30 Series
HITACHI	UH122LC	60,940	25 Series	30 Series
HITACHI	EX300	62,700	25 Series	30 Series
HITACHI	UH143	62,700	25 Series	30 Series
HITACHI	Zaxis270LC	62,800	25 Series	30 Series
HITACHI	Zaxis 270LC-3	63,425	25 Series	30 Series
HITACHI	EX300LC	66,600	30 Series	40 Series
HITACHI	Zaxis330LC	73,500	30 Series	40 Series
HITACHI	Zaxis 350LC-3	77,269	30 Series	40 Series
HITACHI	Zaxis370	82,100	30 Series	40 Series
HITACHI	UH171	85,800	30 Series	40 Series
HITACHI	UH171LC	92,180	40 Series	50 Series
HITACHI	EX400	93,280	40 Series	50 Series
HITACHI	UH181	93,500	40 Series	50 Series
HITACHI	Zaxis450LC F/S*	97,000	40 Series	50 Series
HITACHI	EX400LC	97,200	40 Series	50 Series
HITACHI	Zaxis450LC backhoe	101,900	40 Series	50 Series
HITACHI	Zaxis 450 LC-3	106,180	40 Series	50 Series
HITACHI	Zaxis 450 LC-3 ME	108,274	40 Series	50 Series
HITACHI	UH20	112,200	40 Series	70 Series
HITACHI	EX550BH	121,500	50 Series	70 Series
HITACHI	Zaxis600LC	129,190	50 Series	70 Series
HITACHI	UH261	132,000	50 Series	70 Series
HITACHI	EX700BH	148,000	50 Series	85 Series
HITACHI	Zaxis 650LC-3 ME	151,000	70 Series	85 Series
HITACHI	Zaxis 650 LC-3	152,190	70 Series	85 Series
HITACHI	EX700	154,000	70 Series	85 Series
HITACHI	UH30	165,000	70 Series	85 Series
HITACHI	Zaxis800 Backhoe	166,700	70 Series	85 Series
HITACHI	Zaxis800 FS	171,300	70 Series	85 Series
HITACHI	Zaxis 850LC-3 ME	183,920	70 Series	85 Series
HITACHI	Zaxis 850 LC-3	185,120	70 Series	85 Series

XS SYSTEM SERIES RECOMMENDATION CHART FOR EXCAVATORS

MANUFACTURER	MODEL	OPERATING WEIGHT IN LBS.	RECOMMENDED NOSE SIZE BASED ON	
			APPLICATION	
			STANDARD / HEAVY DUTY	EXTREME SERVICE
HITACHI	EX1000	205,700	85 Series	115 Series
HITACHI	EX1100BH	227,100	85 Series	115 Series
HITACHI	EX1100	228,690	85 Series	115 Series
HITACHI	EX1200-5D Backhoe	238,100	85 Series	115 Series
HITACHI	EX1200 Backhoe	240,300	85 Series	115 Series
HITACHI	EX1200-5D BE Backhoe	240,300	85 Series	115 Series
HITACHI	EX1200-5D front shovel	244,500	85 Series	115 Series
HITACHI	EX1200 FS	244,700	85 Series	115 Series
HITACHI	UH801	345,400	115 Series	145 Series
HITACHI	EX1800	385,000	115 Series	145 Series
HITACHI	EX1800-2BH	390,000	115 Series	145 Series
HITACHI	EX1800-2LD	390,000	115 Series	145 Series
HITACHI	EX1900 FS	409,800	115 Series	145 Series
HITACHI	EX1900 BH	411,200	115 Series	145 Series
HITACHI	EX2500 BH	526,900	145 Series	250 Series
HITACHI	EX2500BH	527,000	145 Series	250 Series
HITACHI	EX2500LD	527,000	145 Series	250 Series
HITACHI	EX2500 FS	533,500	145 Series	250 Series
HITACHI	EX3500-2BH	728,000	250 Series	XS340
HITACHI	EX3500-2LD	736,000	250 Series	XS340
HITACHI	EX3600 BH	767,000	XS340	XS390
HITACHI	EX3600 FS	772,000	XS340	XS390
HITACHI	EX5500 BH	1,142,000	XS390	XS640
HITACHI	EX5500 F/S	1,142,000	XS390	XS640
HYMAC	580D/DS	26,400	15 Series	20 Series
HYMAC	W350D	26,400	15 Series	20 Series
HYMAC	W450E	33,000	15 Series	20 Series
HYMAC	450E/ELC	39,600	20 Series	25 Series
HYMAC	W201	41,800	20 Series	25 Series
HYMAC	201	48,400	25 Series	25 Series
HYUNDAI	R15-7	3,220	04 Series	04 Series
HYUNDAI	R28-7	6,060	04 Series	04 Series
HYUNDAI	R35-7	7,320	04 Series	05 Series
HYUNDAI	R55W*-3	11,330	05 Series	05 Series
HYUNDAI	R55-3	11,910	05 Series	10 Series
HYUNDAI	R55-7	12,570	05 Series	10 Series
HYUNDAI	R95W*-3	21,160	10 Series	15 Series
HYUNDAI	R110-7	24,690	15 Series	15 Series

XS SYSTEM SERIES RECOMMENDATION CHART FOR EXCAVATORS

MANUFACTURER	MODEL	OPERATING WEIGHT IN LBS.	RECOMMENDED NOSE SIZE BASED ON	
			APPLICATION	
			STANDARD / HEAVY DUTY	EXTREME SERVICE
HYUNDAI	R110D-7	26,230	15 Series	20 Series
HYUNDAI	R130W*-3	28,440	15 Series	20 Series
HYUNDAI	R130LC-3	30,420	15 Series	20 Series
HYUNDAI	R140LC-7	30,820	15 Series	20 Series
HYUNDAI	R130LCD-3	32,190	15 Series	20 Series
HYUNDAI	R140LCD-7	32,630	15 Series	20 Series
HYUNDAI	R170W*-3	36,330	20 Series	25 Series
HYUNDAI	R160LC-3	36,600	20 Series	25 Series
HYUNDAI	R160LCD-3	39,020	20 Series	25 Series
HYUNDAI	R160LC-7	38,360	20 Series	25 Series
HYUNDAI	R180LC-3	39,240	20 Series	25 Series
HYUNDAI	R180LC-7	40,680	20 Series	25 Series
HYUNDAI	R180LCD-3	41,840	20 Series	25 Series
HYUNDAI	R200W*-3	44,200	20 Series	25 Series
HYUNDAI	R210LC-3	46,340	20 Series	25 Series
HYUNDAI	R210LC-7	48,460	25 Series	25 Series
HYUNDAI	R210LC-3 L/R*	52,140	25 Series	30 Series
HYUNDAI	RC210LC-7HW	52,400	25 Series	30 Series
HYUNDAI	R250LC-3	53,580	25 Series	30 Series
HYUNDAI	R210LC-7 L/R*	53,700	25 Series	30 Series
HYUNDAI	R250LC-7	56,200	25 Series	30 Series
HYUNDAI	R250LC-7HW	63,100	25 Series	30 Series
HYUNDAI	R290LC-3	63,100	25 Series	30 Series
HYUNDAI	R290LC-7	67,150	30 Series	40 Series
HYUNDAI	R320LC-3	68,780	30 Series	40 Series
HYUNDAI	R290LC-7LR	70,310	30 Series	40 Series
HYUNDAI	R320LC-7	73,200	30 Series	40 Series
HYUNDAI	R290LC-7HW	73,440	30 Series	40 Series
HYUNDAI	R360LC-3	79,400	30 Series	40 Series
HYUNDAI	R360LC-7	81,500	30 Series	40 Series
HYUNDAI	R450LC-3	95,970	40 Series	50 Series
HYUNDAI	R450LC-3 M/E*	97,000	40 Series	50 Series
HYUNDAI	Robex 120W	25,300	15 Series	15 Series
HYUNDAI	R130LC3	28,600	15 Series	20 Series
HYUNDAI	R140W-7 (wheeled)	29,760	15 Series	20 Series
HYUNDAI	R170W-7 (wheeled)	35,710	20 Series	20 Series
HYUNDAI	R180LC3	39,512	20 Series	25 Series
HYUNDAI	Robex 200W	41,360	20 Series	25 Series

XS SYSTEM

SERIES RECOMMENDATION CHART FOR EXCAVATORS

MANUFACTURER	MODEL	OPERATING WEIGHT IN LBS.	RECOMMENDED NOSE SIZE BASED ON	
			APPLICATION	
			STANDARD / HEAVY DUTY	EXTREME SERVICE
HYUNDAI	R200W-7 (wheeled)	45,200	20 Series	25 Series
HYUNDAI	R210LC3	46,851	20 Series	25 Series
HYUNDAI	Robex 290	60,500	25 Series	30 Series
HYUNDAI	R290LC3	64,064	25 Series	30 Series
HYUNDAI	R320LC3	69,520	30 Series	40 Series
HYUNDAI	R360LC3	81,620	30 Series	40 Series
HYUNDAI	R450LC3	96,998	40 Series	50 Series
HYUNDAI	R450LC-7	101,400	40 Series	50 Series
HYUNDAI	R500LC-7	107,800	40 Series	50 Series
IHI	9NX-2	2,060	04 Series	04 Series
IHI	15NX-2	3,850	04 Series	04 Series
IHI	IS28G	5,720	04 Series	04 Series
IHI	25NX-2	6,100	04 Series	04 Series
IHI	IS30G	6,160	04 Series	04 Series
IHI	28N-2	6,189	04 Series	04 Series
IHI	IS25G	6,500	04 Series	04 Series
IHI	30NX-2	6,560	04 Series	04 Series
IHI	IS35G	7,040	04 Series	04 Series
IHI	35NX-2	7,440	04 Series	05 Series
IHI	35N-2	7,759	04 Series	05 Series
IHI	IS40G	9,460	04 Series	05 Series
IHI	45NX	10,505	05 Series	05 Series
IHI	IS50G	11,440	05 Series	05 Series
IHI	55N-2	12,733	05 Series	10 Series
IHI	70Z	16,055	10 Series	10 Series
IHI	80NX-3	18,100	10 Series	15 Series
INGERSOLL RAND	ZX-75	16,538	10 Series	15 Series
INGERSOLL RAND	ZX-125	27,563	15 Series	20 Series
INSLEY	H1500D	78,300	30 Series	40 Series
INSLEY	H2500D	95,500	40 Series	50 Series
INSLEY	H3500D	138,000	50 Series	70 Series
JCB	Micro	2,509	04 Series	04 Series
JCB	Micro Plus	2,893	04 Series	04 Series
JCB	801	3,149	04 Series	04 Series
JCB	8015	3,571	04 Series	04 Series
JCB	8017	3,642	04 Series	04 Series
JCB	8018	3,664	04 Series	04 Series
JCB	803	6,128	04 Series	04 Series

XS SYSTEM SERIES RECOMMENDATION CHART FOR EXCAVATORS

MANUFACTURER	MODEL	OPERATING WEIGHT IN LBS.	RECOMMENDED NOSE SIZE BASED ON	
			APPLICATION	
			STANDARD / HEAVY DUTY	EXTREME SERVICE
JCB	803PLUS	6,128	04 Series	04 Series
JCB	8027Z	5,818	04 Series	04 Series
JCB	8032Z	6,879	04 Series	04 Series
JCB	804SUPER	7,536	04 Series	05 Series
JCB	8052	11,466	05 Series	05 Series
JCB	8060	13,210	05 Series	10 Series
JCB	JS70	15,620	05 Series	10 Series
JCB	JZ140	15,961	10 Series	10 Series
JCB	JZ70	16,537	10 Series	15 Series
JCB	8080	18,960	10 Series	15 Series
JCB	JS110	24,860	15 Series	15 Series
JCB	805BT	27,280	15 Series	20 Series
JCB	806C	29,040	15 Series	20 Series
JCB	812	29,260	15 Series	20 Series
JCB	811	30,360	15 Series	20 Series
JCB	JS130	30,630	15 Series	20 Series
JCB	814	30,800	15 Series	20 Series
JCB	814 super	32,560	15 Series	20 Series
JCB	JS130	33,510	15 Series	20 Series
JCB	JS150	35,420	20 Series	20 Series
JCB	JS160NLC	35,765	20 Series	20 Series
JCB	JS160	39,518	20 Series	25 Series
JCB	807C	40,700	20 Series	25 Series
JCB	817	42,460	20 Series	25 Series
JCB	818	42,900	20 Series	25 Series
JCB	JS200	44,000	20 Series	25 Series
JCB	818 super	44,660	20 Series	25 Series
JCB	820 super	46,860	20 Series	25 Series
JCB	JS220-LR	49,295	25 Series	30 Series
JCB	JS220L	48,829	25 Series	30 Series
JCB	JS220LXD	49,912	25 Series	30 Series
JCB	JS220	49,470	25 Series	30 Series
JCB	JS220XD	50,858	25 Series	30 Series
JCB	JS240	53,240	25 Series	30 Series
JCB	JS260	56,857	25 Series	30 Series
JCB	JS260L	56,866	25 Series	30 Series
JCB	JS260XD	57,818	25 Series	30 Series
JCB	JS260LXD	58,302	25 Series	30 Series

XS SYSTEM SERIES RECOMMENDATION CHART FOR EXCAVATORS

MANUFACTURER	MODEL	OPERATING WEIGHT IN LBS.	RECOMMENDED NOSE SIZE BASED ON	
			APPLICATION	
			STANDARD / HEAVY DUTY	EXTREME SERVICE
JCB	JS260-LR	59,698	25 Series	30 Series
JCB	JS330XD	72,532	30 Series	40 Series
JCB	JS330	72,969	30 Series	40 Series
JCB	JS330LXD	74,480	30 Series	40 Series
JCB	JS330L	75,500	30 Series	40 Series
JCB	JS330-LR	75,500	30 Series	40 Series
JCB	JS300	97,680	40 Series	50 Series
JCB	JS460	103,220	40 Series	50 Series
JCB	JS460L	103,220	40 Series	50 Series
JOHN DEERE	17ZTS	3,814	04 Series	04 Series
JOHN DEERE	27D	6,393	04 Series	04 Series
JOHN DEERE	27CZTS	6,482	04 Series	04 Series
JOHN DEERE	35D	7,672	04 Series	05 Series
JOHN DEERE	35CZTS	7,760	04 Series	05 Series
JOHN DEERE	50CZTS	10,252	05 Series	05 Series
JOHN DEERE	50D	10,428	05 Series	05 Series
JOHN DEERE	80C	15,905	10 Series	10 Series
JOHN DEERE	190	16,300	10 Series	10 Series
JOHN DEERE	75C	17,200	10 Series	15 Series
JOHN DEERE	290D	20,743	10 Series	15 Series
JOHN DEERE	490	26,780	15 Series	20 Series
JOHN DEERE	120C	28,840	15 Series	20 Series
JOHN DEERE	135CRTS	30,440	15 Series	20 Series
JOHN DEERE	590D	33,180	15 Series	20 Series
JOHN DEERE	160	33,444	15 Series	20 Series
JOHN DEERE	160CLC	34,950	20 Series	20 Series
JOHN DEERE	595D	36,575	20 Series	25 Series
JOHN DEERE	180CW	41,447	20 Series	25 Series
JOHN DEERE	180CW (2-pc. boom)	42,549	20 Series	25 Series
JOHN DEERE	690E-LC	45,120	20 Series	25 Series
JOHN DEERE	200CLC	46,130	20 Series	25 Series
JOHN DEERE	210CW (monoblock boom)	45,400	20 Series	25 Series
JOHN DEERE	210CW (2-pc. boom)	46,562	20 Series	25 Series
JOHN DEERE	790	49,500	25 Series	30 Series
JOHN DEERE	790E-LC	51,725	25 Series	30 Series
JOHN DEERE	225CLC RTS	53,440	25 Series	30 Series
JOHN DEERE	230CLC	54,020	25 Series	30 Series
JOHN DEERE	240D	54,654	25 Series	30 Series

XS SYSTEM SERIES RECOMMENDATION CHART FOR EXCAVATORS

MANUFACTURER	MODEL	OPERATING WEIGHT IN LBS.	RECOMMENDED NOSE SIZE BASED ON	
			APPLICATION	
			STANDARD / HEAVY DUTY	EXTREME SERVICE
JOHN DEERE	792D-LC	60,250	25 Series	30 Series
JOHN DEERE	792	62,700	25 Series	30 Series
JOHN DEERE	270CLC	62,870	25 Series	30 Series
JOHN DEERE	270DLC	63,425	25 Series	30 Series
JOHN DEERE	892E-LC	67,450	30 Series	40 Series
JOHN DEERE	330CLC	72,800	30 Series	40 Series
JOHN DEERE	350DLC	77,269	30 Series	40 Series
JOHN DEERE	370C	81,200	30 Series	40 Series
JOHN DEERE	992E-LC	97,600	40 Series	50 Series
JOHN DEERE	450CLC	104,000	40 Series	50 Series
JOHN DEERE	450DLC	106,180	40 Series	50 Series
JOHN DEERE	450DLCME	108,274	40 Series	50 Series
JOHN DEERE	600CLC	131,850	50 Series	70 Series
JOHN DEERE	650DLC	152,190	70 Series	85 Series
JOHN DEERE	650DLCME	151,000	70 Series	85 Series
JOHN DEERE	800C	169,120	70 Series	85 Series
JOHN DEERE	850DLC	185,520	70 Series	85 Series
JOHN DEERE	850DLCME	184,320	70 Series	85 Series
KAMO	3CX-35	7,700	04 Series	05 Series
KAMO	3CX-65	14,300	05 Series	10 Series
KATO	HD140SEV	9,900	05 Series	05 Series
KATO	HD400SE	24,200	15 Series	15 Series
KATO	450V-2	25,500	15 Series	15 Series
KATO	HD450SE	26,400	15 Series	20 Series
KATO	HD700SEV	40,700	20 Series	25 Series
KATO	700V-2LC	42,450	20 Series	25 Series
KATO	HD800SEV	43,560	20 Series	25 Series
KATO	HD770SE	44,000	20 Series	25 Series
KATO	800V-2LC	48,650	25 Series	30 Series
KATO	HD900SEV	49,500	25 Series	30 Series
KATO	900V-2LC	52,700	25 Series	30 Series
KATO	HD1220SE	61,600	25 Series	30 Series
KATO	1250V-2LC	68,590	30 Series	40 Series
KATO	1880V-2	101,870	40 Series	50 Series
KATO	HD2500SE2	143,000	50 Series	70 Series
KOBELCO	SK007	1,540	04 Series	04 Series
KOBELCO	SK014	3,080	04 Series	04 Series
KOBELCO	13SR	3,240	04 Series	04 Series

XS SYSTEM SERIES RECOMMENDATION CHART FOR EXCAVATORS

MANUFACTURER	MODEL	OPERATING WEIGHT IN LBS.	RECOMMENDED NOSE SIZE BASED ON	
			APPLICATION	
			STANDARD / HEAVY DUTY	EXTREME SERVICE
KOBELCO	SK015	3,410	04 Series	04 Series
KOBELCO	25SR-2	5,556	04 Series	04 Series
KOBELCO	27SR-3	5,557	04 Series	04 Series
KOBELCO	SK024	5,940	04 Series	04 Series
KOBELCO	SK025	6,226	04 Series	04 Series
KOBELCO	SK027	6,380	04 Series	04 Series
KOBELCO	30SR-2	6,992	04 Series	04 Series
KOBELCO	30SR-3	6,680	04 Series	04 Series
KOBELCO	SK032	7,480	04 Series	05 Series
KOBELCO	SK035	7,480	04 Series	05 Series
KOBELCO	35SR-2	8,046	04 Series	05 Series
KOBELCO	35SR-3	7,960	04 Series	05 Series
KOBELCO	SK042	9,900	05 Series	05 Series
KOBELCO	50SR-3	10,275	05 Series	05 Series
KOBELCO	45SR-2	10,428	05 Series	05 Series
KOBELCO	SK60 mark3	14,080	05 Series	10 Series
KOBELCO	K903-2	14,520	05 Series	10 Series
KOBELCO	K903A	14,520	05 Series	10 Series
KOBELCO	SK 60 M IV	14,740	05 Series	10 Series
KOBELCO	70SR	16,400	10 Series	10 Series
KOBELCO	80CS	17,600	10 Series	15 Series
KOBELCO	K 904-2	22,880	15 Series	15 Series
KOBELCO	SK100 mark3	23,100	15 Series	15 Series
KOBELCO	K904C	23,980	15 Series	15 Series
KOBELCO	K904D	23,980	15 Series	15 Series
KOBELCO	SK100 M IV	23,980	15 Series	15 Series
KOBELCO	SK120 mark3	25,300	15 Series	15 Series
KOBELCO	K905-2	26,180	15 Series	20 Series
KOBELCO	K904 DL	26,620	15 Series	20 Series
KOBELCO	K905	27,060	15 Series	20 Series
KOBELCO	SK120 M IV	27,060	15 Series	20 Series
KOBELCO	135SRLC	30,870	15 Series	20 Series
KOBELCO	115SRDZ	31,750	15 Series	20 Series
KOBELCO	135SRL	34,613	20 Series	20 Series
KOBELCO	SK150 M IV	35,640	20 Series	20 Series
KOBELCO	ED150	35,720	20 Series	20 Series
KOBELCO	SK160LC	36,800	20 Series	25 Series
KOBELCO	SK160LC	37,555	20 Series	25 Series

XS SYSTEM SERIES RECOMMENDATION CHART FOR EXCAVATORS

MANUFACTURER	MODEL	OPERATING WEIGHT IN LBS.	RECOMMENDED NOSE SIZE BASED ON	
			APPLICATION	
			STANDARD / HEAVY DUTY	EXTREME SERVICE
KOBELCO	K907-2	40,700	20 Series	25 Series
KOBELCO	SK200 mark3	41,140	20 Series	25 Series
KOBELCO	K907 C	41,580	20 Series	25 Series
KOBELCO	K907 CL	42,240	20 Series	25 Series
KOBELCO	ED190	43,700	20 Series	25 Series
KOBELCO	SK200 M IV	45,760	20 Series	25 Series
KOBELCO	200SRLC	48,500	25 Series	25 Series
KOBELCO	SK210LC	47,000	20 Series	25 Series
KOBELCO	K909-2	49,500	25 Series	30 Series
KOBELCO	K909 A	49,610	25 Series	30 Series
KOBELCO	SK220 mark3	50,380	25 Series	30 Series
KOBELCO	SK250LC	55,000	25 Series	30 Series
KOBELCO	SK220 M IV	55,660	25 Series	30 Series
KOBELCO	235SRLC	60,638	25 Series	30 Series
KOBELCO	SK270 M IV	60,940	25 Series	30 Series
KOBELCO	K912	63,800	25 Series	30 Series
KOBELCO	K912-2	63,800	25 Series	30 Series
KOBELCO	SK300-II	63,800	25 Series	30 Series
KOBELCO	SK290LC	66,350	30 Series	40 Series
KOBELCO	SK300-IV	72,600	30 Series	40 Series
KOBELCO	SK330LC	77,800	30 Series	40 Series
KOBELCO	K914	80,960	30 Series	40 Series
KOBELCO	SK400-II	90,200	40 Series	50 Series
KOBELCO	K916-2	91,300	40 Series	50 Series
KOBELCO	SK400-IV	100,540	40 Series	50 Series
KOBELCO	SK480LC	108,045	40 Series	50 Series
KOBELCO	K935	127,600	50 Series	70 Series
KOBELCO	K975-2	286,000	115 Series	115 Series
KOBELCO	K975-2 CH	290,400	115 Series	115 Series
KOMATSU	PC100F-6	31,460	15 Series	20 Series
KOMATSU	PC800SE-6	164,840	85 Series	85 Series
KOMATSU	PC800-6	165,940	85 Series	85 Series
KOMATSU	PC02-1	1,100	04 Series	04 Series
KOMATSU	PC09-1	1,960	04 Series	04 Series
KOMATSU	PC09-1	1,985	04 Series	04 Series
KOMATSU	PC03-2	1,984	04 Series	04 Series
KOMATSU	PC05-5	2,640	04 Series	04 Series
KOMATSU	PC05-6	2,860	04 Series	04 Series

XS SYSTEM SERIES RECOMMENDATION CHART FOR EXCAVATORS

MANUFACTURER	MODEL	OPERATING WEIGHT IN LBS.	RECOMMENDED NOSE SIZE BASED ON	
			APPLICATION	
			STANDARD / HEAVY DUTY	EXTREME SERVICE
KOMATSU	PC15R-8E	3,560	04 Series	04 Series
KOMATSU	PC15R-8E DELUXE	3,560	04 Series	04 Series
KOMATSU	PC15MR-1	3,980	04 Series	04 Series
KOMATSU	PC15MRx-1	3,980	04 Series	04 Series
KOMATSU	PC18MR-2	4,090	04 Series	04 Series
KOMATSU	PC20MR-1	4,830	04 Series	04 Series
KOMATSU	PC20MRx-1	4,830	04 Series	04 Series
KOMATSU	PC20MR-2	5,060	04 Series	04 Series
KOMATSU	PC10-5	5,280	04 Series	04 Series
KOMATSU	PC15-2	5,280	04 Series	04 Series
KOMATSU	PC10-6	5,720	04 Series	04 Series
KOMATSU	PC27R-8E	6,239	04 Series	04 Series
KOMATSU	PC27R-8E DELUXE	6,239	04 Series	04 Series
KOMATSU	PC20-5	6,380	04 Series	04 Series
KOMATSU	PC27MR-2	6,590	04 Series	04 Series
KOMATSU	PC27MR-1	6,605	04 Series	04 Series
KOMATSU	PC27MRx-1	6,605	04 Series	04 Series
KOMATSU	PC30MR-1	7,060	04 Series	04 Series
KOMATSU	PC30MRx-1	7,060	04 Series	04 Series
KOMATSU	PC30-1	7,260	04 Series	04 Series
KOMATSU	PC30-5	7,260	04 Series	04 Series
KOMATSU	PC20-6	7,480	04 Series	05 Series
KOMATSU	PC35R-8E	7,615	04 Series	05 Series
KOMATSU	PC35R-8E DELUXE	7,628	04 Series	05 Series
KOMATSU	PC30-6	7,920	04 Series	05 Series
KOMATSU	PC35MR-2	8,245	04 Series	05 Series
KOMATSU	PC35MR-1	8,300	04 Series	05 Series
KOMATSU	PC35MRx-1	8,300	04 Series	05 Series
KOMATSU	PC40-3	9,460	04 Series	05 Series
KOMATSU	PC40-6	9,680	04 Series	05 Series
KOMATSU	PC40MR-1	9,900	05 Series	05 Series
KOMATSU	PC40MRx-1	9,900	05 Series	05 Series
KOMATSU	PC40-2	10,120	05 Series	05 Series
KOMATSU	PC45R-8E	10,174	05 Series	05 Series
KOMATSU	PC45R-8E DELUXE	10,174	05 Series	05 Series
KOMATSU	PC45MR-1	10,300	05 Series	05 Series
KOMATSU	PC45MRx-1	10,300	05 Series	05 Series
KOMATSU	PC40MR-2	10,560	05 Series	05 Series

XS SYSTEM SERIES RECOMMENDATION CHART FOR EXCAVATORS

MANUFACTURER	MODEL	OPERATING WEIGHT IN LBS.	RECOMMENDED NOSE SIZE BASED ON	
			APPLICATION	
			STANDARD / HEAVY DUTY	EXTREME SERVICE
KOMATSU	PC50MR-2	11,110	05 Series	05 Series
KOMATSU	PC58UU-3	11,540	05 Series	05 Series
KOMATSU	PC60-5	14,476	05 Series	10 Series
KOMATSU	PC607B	15,124	05 Series	10 Series
KOMATSU	PC60-7B	15,124	05 Series	10 Series
KOMATSU	PC78US-6	15,850	10 Series	10 Series
KOMATSU	PC75R-2	16,557	10 Series	15 Series
KOMATSU	PC78MR-6	18,230	10 Series	15 Series
KOMATSU	PC95	20,084	10 Series	15 Series
KOMATSU	PC95R-2	20,635	10 Series	15 Series
KOMATSU	PC100-3	23,540	15 Series	15 Series
KOMATSU	PC120-2	25,300	15 Series	15 Series
KOMATSU	PC120-6	26,580	15 Series	20 Series
KOMATSU	PC120-3	26,620	15 Series	20 Series
KOMATSU	PC120-6 AVANCE	28,375	15 Series	20 Series
KOMATSU	PC120LC-6	28,375	15 Series	20 Series
KOMATSU	PC120LC-6 AVANCE	28,375	15 Series	20 Series
KOMATSU	PC120-6	28,375	15 Series	20 Series
KOMATSU	PC120LC-6	28,375	15 Series	20 Series
KOMATSU	PC128UU	28,800	15 Series	20 Series
KOMATSU	PC128US-2A	29,134	15 Series	20 Series
KOMATSU	PC120-5	29,260	15 Series	20 Series
KOMATSU	PC120-6	28,375	15 Series	20 Series
KOMATSU	PC120LC-6	28,375	15 Series	20 Series
KOMATSU	PC128US-2 GALEO	29,262	15 Series	20 Series
KOMATSU	PC128US-2	29,540	15 Series	20 Series
KOMATSU	PC128UU-2	29,540	15 Series	20 Series
KOMATSU	PC128UU-2 AVANCE	30,360	15 Series	20 Series
KOMATSU	PC128UU-2	30,360	15 Series	20 Series
KOMATSU	PC150-1	31,900	15 Series	20 Series
KOMATSU	PC150-3	32,340	15 Series	20 Series
KOMATSU	PC138USLC-2	32,537	15 Series	20 Series
KOMATSU	PW150-1	34,100	15 Series	20 Series
KOMATSU	PC158USLC-2	36,380	20 Series	25 Series
KOMATSU	PC150-5	36,960	20 Series	25 Series
KOMATSU	PC160LC-7	37,130	20 Series	25 Series
KOMATSU	PW170ES-6	37,589	20 Series	25 Series
KOMATSU	PW170-5	37,620	20 Series	25 Series

XS SYSTEM SERIES RECOMMENDATION CHART FOR EXCAVATORS

MANUFACTURER	MODEL	OPERATING WEIGHT IN LBS.	RECOMMENDED NOSE SIZE BASED ON	
			APPLICATION	
			STANDARD / HEAVY DUTY	EXTREME SERVICE
KOMATSU	PW170ES-6*	38,449	20 Series	25 Series
KOMATSU	PC180-3	39,600	20 Series	25 Series
KOMATSU	PC150-6	40,054	20 Series	25 Series
KOMATSU	PC150LC-6	40,054	20 Series	25 Series
KOMATSU	PC200-2	41,360	20 Series	25 Series
KOMATSU	PC180-5	42,460	20 Series	25 Series
KOMATSU	PC200-3	42,680	20 Series	25 Series
KOMATSU	PC200-7	44,110	20 Series	25 Series
KOMATSU	PC200-7B	44,110	20 Series	25 Series
KOMATSU	PC200-6	44,430	20 Series	25 Series
KOMATSU	PC210-5	45,100	20 Series	25 Series
KOMATSU	PC210-3	46,200	20 Series	25 Series
KOMATSU	PC200LC-7L	46,410	20 Series	25 Series
KOMATSU	PF55L	46,640	20 Series	25 Series
KOMATSU	PC200LC-7	46,870	20 Series	25 Series
KOMATSU	PC200-LC6	46,970	20 Series	25 Series
KOMATSU	PC200LC-8	47,260	20 Series	25 Series
KOMATSU	PC220	47,960	25 Series	25 Series
KOMATSU	PC220-3	49,280	25 Series	30 Series
KOMATSU	PC200LC-6 AVANCE	49,434	25 Series	30 Series
KOMATSU	*PW220-7	51,000	25 Series	30 Series
KOMATSU	PW200-7	51,000	25 Series	30 Series
KOMATSU	*PC228LC-7	51,148	25 Series	30 Series
KOMATSU	PC228USLC-3N	51,148	25 Series	30 Series
KOMATSU	PC210-LC6	51,180	25 Series	30 Series
KOMATSU	PC210-LC6	51,765	25 Series	30 Series
KOMATSU	PC228USLC-3	51,280	25 Series	30 Series
KOMATSU	PC228USLC-3	51,765	25 Series	30 Series
KOMATSU	PC228USLC-2 AVANCE	52,280	25 Series	30 Series
KOMATSU	PC220-LC6	53,200	25 Series	30 Series
KOMATSU	PC240-3	53,680	25 Series	30 Series
KOMATSU	PC220LC-7L	54,046	25 Series	30 Series
KOMATSU	PC220LC-8	54,926	25 Series	30 Series
KOMATSU	PC240-5	55,000	25 Series	30 Series
KOMATSU	PC220LC-7	55,189	25 Series	30 Series
KOMATSU	PC220LC-6 AVANCE	57,483	25 Series	30 Series
KOMATSU	PC250-LC6	60,630	25 Series	30 Series
KOMATSU	PC280LC3	62,040	25 Series	30 Series

XS SYSTEM SERIES RECOMMENDATION CHART FOR EXCAVATORS

MANUFACTURER	MODEL	OPERATING WEIGHT IN LBS.	RECOMMENDED NOSE SIZE BASED ON	
			APPLICATION	
			STANDARD / HEAVY DUTY	EXTREME SERVICE
KOMATSU	PC270LC-7	62,830	25 Series	30 Series
KOMATSU	PC270LC-7L	63,670	25 Series	30 Series
KOMATSU	PC300-3	63,800	25 Series	30 Series
KOMATSU	PC270LC-6 AVANCE	65,035	30 Series	30 Series
KOMATSU	PC300-2	69,300	30 Series	40 Series
KOMATSU	PC300LC	69,300	30 Series	40 Series
KOMATSU	PC300-5	71,500	30 Series	40 Series
KOMATSU	PC308USLC-3	72,066	30 Series	40 Series
KOMATSU	PC300-LC6	72,312	30 Series	40 Series
KOMATSU	PC308USLC-3	73,146	30 Series	40 Series
KOMATSU	PC300LC-7L	73,210	30 Series	40 Series
KOMATSU	PC350	73,630	40 Series	50 Series
KOMATSU	PC300LC-6 AVANCE	74,803	30 Series	40 Series
KOMATSU	PC300LC-7	74,856	30 Series	40 Series
KOMATSU	PC300LC-7	77,298	30 Series	40 Series
KOMATSU	PC300HD-6 AVANCE	80,755	30 Series	40 Series
KOMATSU	PC360-5	81,400	30 Series	40 Series
KOMATSU	PC300HD-7L	81,820	30 Series	40 Series
KOMATSU	PC300HD-7	82,239	30 Series	40 Series
KOMATSU	PC360LC3	83,160	30 Series	40 Series
KOMATSU	PC300HD-6	83,192	30 Series	40 Series
KOMATSU	PC300HD-7	85,868	30 Series	40 Series
KOMATSU	PC400-1	89,320	40 Series	50 Series
KOMATSU	PC400-3	92,400	40 Series	50 Series
KOMATSU	PC400-5	94,380	40 Series	50 Series
KOMATSU	PC300HD-6MH AVANCE	95,000	40 Series	50 Series
KOMATSU	PC400-LC6	95,147	40 Series	50 Series
KOMATSU	PC400LC-6 AVANCE	99,517	40 Series	50 Series
KOMATSU	PC400HD-6	99,807	40 Series	50 Series
KOMATSU	PC400LC-7L	99,862	40 Series	50 Series
KOMATSU	PC400LC-7	102,018	40 Series	50 Series
KOMATSU	PC400LC-7	103,000	40 Series	50 Series
KOMATSU	PC450LCD-6 AVANCE	118,915	50 Series	70 Series
KOMATSU	PC400LC-6MH AVANCE	123,000	50 Series	70 Series
KOMATSU	PC600LC-6A	131,393	50 Series	70 Series
KOMATSU	PC600LC-8	132,280	50 Series	70 Series
KOMATSU	PW400MH-6 AVANCE	132,981	50 Series	70 Series
KOMATSU	PC600LC-6 AVANCE	133,160	50 Series	70 Series

XS SYSTEM SERIES RECOMMENDATION CHART FOR EXCAVATORS

MANUFACTURER	MODEL	OPERATING WEIGHT IN LBS.	RECOMMENDED NOSE SIZE BASED ON	
			APPLICATION	
			STANDARD / HEAVY DUTY	EXTREME SERVICE
KOMATSU	PC600LC-7	133,160	50 Series	70 Series
KOMATSU	PC650-3	143,000	50 Series	70 Series
KOMATSU	PC650-5	143,000	50 Series	70 Series
KOMATSU	PC600LC-6MH	144,014	50 Series	70 Series
KOMATSU	PC750-6	154,710	70 Series	85 Series
KOMATSU	PC750-6A	162,480	70 Series	85 Series
KOMATSU	PC750LC-6A	171,070	70 Series	85 Series
KOMATSU	PC750LC-7	175,837	70 Series	85 Series
KOMATSU	PC750-6 AVANCE	178,055	70 Series	85 Series
KOMATSU	PC750LC-6 AVANCE	178,055	70 Series	85 Series
KOMATSU	PC750SE-6 AVANCE	178,055	70 Series	85 Series
KOMATSU	PC750LC-6MH	203,700	85 Series	115 Series
KOMATSU	PC1000-1	209,000	85 Series	115 Series
KOMATSU	PC1100LC-6MH	213,145	85 Series	115 Series
KOMATSU	PC1100-6	248,060	85 Series	115 Series
KOMATSU	PC1100LC-6	248,060	85 Series	115 Series
KOMATSU	PC1250-7	249,560	85 Series	115 Series
KOMATSU	PC1250LC-7	249,560	85 Series	115 Series
KOMATSU	PC1250LC-7MH	259,474	85 Series	115 Series
KOMATSU	PC1400	309,000	115 Series	115 Series
KOMATSU	PC1600-1	352,000	115 Series	145 Series
KOMATSU	PC1800-6	405,910	115 Series	145 Series
KOMATSU	PC3000 BH	557,900	145 Series	250 Series
KOMATSU	PC3000	569,000	145 Series	250 Series
KOMATSU	PC3000 FS	569,000	145 Series	250 Series
KOMATSU	PC4000 BH	849,000	XS340	Check with Hensley
KOMATSU	PC4000 FS	849,000	XS390	Check with Hensley
KOMATSU	PC4000	870,000	XS340	Check with Hensley
KOMATSU	PC5500	1,135,500	Check with Hensley	Check with Hensley
KOMATSU	PC8000	1,600,000	XS640	XS800
KOMATSU	PC8000 FS	1,600,000	XS640	XS800
KUBOTA	K008-3	2,200	04 Series	04 Series
KUBOTA	KX-41	3,615	04 Series	04 Series
KUBOTA	KX41-3SV	3,693	04 Series	04 Series
KUBOTA	U15	3,704	04 Series	04 Series
KUBOTA	U25	5,625	04 Series	04 Series
KUBOTA	KX-71	6,415	04 Series	04 Series
KUBOTA	KX91-3	7,110	04 Series	04 Series

XS SYSTEM

SERIES RECOMMENDATION CHART FOR EXCAVATORS

MANUFACTURER	MODEL	OPERATING WEIGHT IN LBS.	RECOMMENDED NOSE SIZE BASED ON	
			APPLICATION	
			STANDARD / HEAVY DUTY	EXTREME SERVICE
KUBOTA	KX71-3	7,330	04 Series	05 Series
KUBOTA	U35	8,092	04 Series	05 Series
KUBOTA	KX-101	8,115	04 Series	05 Series
KUBOTA	KX121-3	9,063	04 Series	05 Series
KUBOTA	KH151	10,758	05 Series	05 Series
KUBOTA	KX161-3	11,530	05 Series	05 Series
KUBOTA	U45	11,630	05 Series	05 Series
KUBOTA	KH191	12,518	05 Series	10 Series
LALTESI	101	14,520	05 Series	10 Series
LALTESI	111	17,820	10 Series	15 Series
LALTESI	112G	19,690	10 Series	15 Series
LALTESI	221	28,600	15 Series	20 Series
LALTESI	221HD	30,140	15 Series	20 Series
LALTESI	222C	30,360	15 Series	20 Series
LALTESI	350HD	37,840	20 Series	25 Series
LALTESI	341	39,380	20 Series	25 Series
LALTESI	341HD	44,000	20 Series	25 Series
LALTESI	420	46,200	20 Series	25 Series
LALTESI	420HD	46,200	20 Series	25 Series
LALTESI	441	47,300	20 Series	25 Series
LALTESI	541	56,100	25 Series	30 Series
LALTESI	500HD	57,200	25 Series	30 Series
LALTESI	551HD	66,000	30 Series	40 Series
LALTESI	650HD	72,600	30 Series	40 Series
LALTESI	750HD	84,700	30 Series	40 Series
LBX (Linkbelt)	75Spin Ace	16,900	Too Small	15 Series
LBX (Linkbelt)	75MSR offset boom	17,800	Too Small	15 Series
LBX (Linkbelt)	80 SPIN ACE SWING BOOM	18,400	Too Small	15 Series
LBX (Linkbelt)	130LX	27,100	15 Series	20 Series
LBX (Linkbelt)	135Spin Ace	29,100	15 Series	20 Series
LBX (Linkbelt)	135MSR SPIN ACE	29,100	15 Series	20 Series
LBX (Linkbelt)	160LX	36,200	20 Series	25 Series
LBX (Linkbelt)	210LX	44,800	20 Series	25 Series
LBX (Linkbelt)	210LX Long Front	47,600	20 Series	25 Series
LBX (Linkbelt)	225Spin Ace	51,376	25 Series	30 Series
LBX (Linkbelt)	225MSR SPIN ACE	51,376	25 Series	30 Series
LBX (Linkbelt)	240LX	52,700	25 Series	30 Series
LBX (Linkbelt)	240LX Long Front	61,100	25 Series	30 Series

XS SYSTEM

SERIES RECOMMENDATION CHART FOR EXCAVATORS

MANUFACTURER	MODEL	OPERATING WEIGHT IN LBS.	RECOMMENDED NOSE SIZE BASED ON	
			APPLICATION	
			STANDARD / HEAVY DUTY	EXTREME SERVICE
LBX (Linkbelt)	290	64,400	25 Series	30 Series
LBX (Linkbelt)	290LX	64,400	25 Series	30 Series
LBX (Linkbelt)	330	78,000	30 Series	40 Series
LBX (Linkbelt)	330LX (Tier III)	78,000	30 Series	40 Series
LBX (Linkbelt)	460	101,200	40 Series	50 Series
LBX (Linkbelt)	460LX (fixed side frames)	101,200	40 Series	50 Series
LBX (Linkbelt)	460LX (extendable side frames)	104,500	40 Series	50 Series
LBX (Linkbelt)	700LX (Tier III)	152,600	70 Series	85 Series
LBX (Linkbelt)	700LXME (Tier III)	153,700	70 Series	85 Series
LBX (Linkbelt)	800	174,600	70 Series	85 Series
LBX (Linkbelt)	800LX	175,371	70 Series	85 Series
LBX (Linkbelt)	800LXME	174,600	70 Series	85 Series
LIEBHERR	A308	19,360	10 Series	15 Series
LIEBHERR	R308	19,778	10 Series	15 Series
LIEBHERR	A310	22,880	15 Series	15 Series
LIEBHERR	R310	23,100	15 Series	15 Series
LIEBHERR	A310B	24,420	15 Series	15 Series
LIEBHERR	A900C	26,400	15 Series	20 Series
LIEBHERR	R310B	27,940	15 Series	20 Series
LIEBHERR	A312	28,600	15 Series	20 Series
LIEBHERR	R900C	30,360	15 Series	20 Series
LIEBHERR	A900 Litro	31,460	15 Series	20 Series
LIEBHERR	R312	31,680	15 Series	20 Series
LIEBHERR	A902	34,100	15 Series	20 Series
LIEBHERR	R902	36,520	20 Series	25 Series
LIEBHERR	A902 Litro	37,400	20 Series	25 Series
LIEBHERR	R900 Litro	38,720	20 Series	25 Series
LIEBHERR	A900C (wheeled)	39,242	20 Series	25 Series
LIEBHERR	A912	39,556	20 Series	25 Series
LIEBHERR	R902 Litro	39,556	20 Series	25 Series
LIEBHERR	R912	39,600	20 Series	25 Series
LIEBHERR	A904*	42,700	20 Series	25 Series
LIEBHERR	A904C (wheeled)	43,400	20 Series	25 Series
LIEBHERR	A912 Litro	43,560	20 Series	25 Series
LIEBHERR	A914C (wheeled)	43,900	20 Series	25 Series
LIEBHERR	R912 Litro	45,320	20 Series	25 Series
LIEBHERR	R904	45,640	20 Series	25 Series
LIEBHERR	A922	45,980	20 Series	25 Series

XS SYSTEM SERIES RECOMMENDATION CHART FOR EXCAVATORS

MANUFACTURER	MODEL	OPERATING WEIGHT IN LBS.	RECOMMENDED NOSE SIZE BASED ON	
			APPLICATION	
			STANDARD / HEAVY DUTY	EXTREME SERVICE
LIEBHERR	A914*	46,520	20 Series	25 Series
LIEBHERR	R904C	46,700	20 Series	25 Series
LIEBHERR	R922	47,080	20 Series	25 Series
LIEBHERR	A922 Litro	48,400	25 Series	25 Series
LIEBHERR	A924B (wheeled)	49,800	25 Series	30 Series
LIEBHERR	R922 Litro	49,874	25 Series	30 Series
LIEBHERR	R914	50,160	25 Series	30 Series
LIEBHERR	A924*	50,670	25 Series	30 Series
LIEBHERR	R914B	53,500	25 Series	30 Series
LIEBHERR	R932	56,760	25 Series	30 Series
LIEBHERR	A932 Litro	57,200	25 Series	30 Series
LIEBHERR	R924	57,320	25 Series	30 Series
LIEBHERR	R924B	58,454	25 Series	30 Series
LIEBHERR	R932 Litro	58,520	25 Series	30 Series
LIEBHERR	A942	65,340	30 Series	30 Series
LIEBHERR	R942	68,420	30 Series	40 Series
LIEBHERR	R934C	70,107	30 Series	40 Series
LIEBHERR	R934B	72,970	30 Series	40 Series
LIEBHERR	R942 Litro	74,800	30 Series	40 Series
LIEBHERR	R944	77,160	30 Series	40 Series
LIEBHERR	R944C	86,377	30 Series	40 Series
LIEBHERR	R952	91,520	40 Series	50 Series
LIEBHERR	R954 Litro	99,220	40 Series	50 Series
LIEBHERR	R952 Litro	101,200	40 Series	50 Series
LIEBHERR	R954B	105,050	40 Series	50 Series
LIEBHERR	R954C	108,137	40 Series	50 Series
LIEBHERR	R962	122,320	50 Series	70 Series
LIEBHERR	R962 Litro	123,200	50 Series	70 Series
LIEBHERR	R964 Litro	128,920	50 Series	70 Series
LIEBHERR	R972	140,140	50 Series	70 Series
LIEBHERR	R972 HD	140,140	50 Series	70 Series
LIEBHERR	R964B	140,454	50 Series	70 Series
LIEBHERR	R974 Litro	154,000	70 Series	85 Series
LIEBHERR	R964B	154,100	70 Series	85 Series
LIEBHERR	R974 BLitro	176,000	70 Series	85 Series
LIEBHERR	R974B	178,800	70 Series	85 Series
LIEBHERR	R974B	181,900	70 Series	85 Series
LIEBHERR	R982	190,740	70 Series	85 Series

XS SYSTEM

SERIES RECOMMENDATION CHART FOR EXCAVATORS

MANUFACTURER	MODEL	OPERATING WEIGHT IN LBS.	RECOMMENDED NOSE SIZE BASED ON	
			APPLICATION	
			STANDARD / HEAVY DUTY	EXTREME SERVICE
LIEBHERR	R984	191,620	70 Series	85 Series
LIEBHERR	R984 Litro	206,800	85 Series	115 Series
LIEBHERR	R984 BLitro	242,000	85 Series	115 Series
LIEBHERR	R984C	257,500	85 Series	115 Series
LIEBHERR	R984C	258,380	85 Series	115 Series
LIEBHERR	R992 Litro	301,400	115 Series	115 Series
LIEBHERR	R991	349,800	115 Series	145 Series
LIEBHERR	R994 Litro	486,200	145 Series	250 Series
LIEBHERR	R994	504,850	145 Series	250 Series
LIEBHERR	R994B	652,570	250 Series	XS340
LIEBHERR	R995	968,950	XS390	XS640
LIEBHERR	R996	1,427,650	XS640	XS800
LINK-BELT	LS-1600	15,259	05 Series	10 Series
LINK-BELT	2650Q	28,080	15 Series	20 Series
LINK-BELT	2700Q	35,240	20 Series	20 Series
LINK-BELT	2800Q	44,620	20 Series	25 Series
LINK-BELT	2800LFQ	47,190	20 Series	25 Series
LINK-BELT	3400Q	53,190	25 Series	30 Series
LINK-BELT	3400LFQ	59,650	25 Series	30 Series
LINK-BELT	4300Q	73,600	30 Series	40 Series
LINK-BELT	5800Q	99,660	40 Series	50 Series
MACMOTER	M1	2,860	04 Series	04 Series
MACMOTER	M5	10,120	05 Series	05 Series
MACMOTER	M7	15,620	05 Series	10 Series
MACMOTER	M9	20,900	10 Series	15 Series
MECALAC	8CX	14,300	05 Series	10 Series
MECALAC	11CX	18,260	10 Series	15 Series
MECALAC	16DX	46,200	20 Series	25 Series
MELROE	320	3,180	04 Series	04 Series
MELROE	325	5,760	04 Series	04 Series
MELROE	331	6,960	04 Series	04 Series
MENZI MUCK	6000	14,300	05 Series	10 Series
mitsubishi	MS070U2	16,060	10 Series	10 Series
mitsubishi	MS110	23,540	15 Series	15 Series
mitsubishi	MS120-2	25,960	15 Series	20 Series
mitsubishi	MS140	31,460	15 Series	20 Series
mitsubishi	MS180-3	41,800	20 Series	25 Series
mitsubishi	MS230-3	51,920	25 Series	30 Series

XS SYSTEM

SERIES RECOMMENDATION CHART FOR EXCAVATORS

MANUFACTURER	MODEL	OPERATING WEIGHT IN LBS.	RECOMMENDED NOSE SIZE BASED ON	
			APPLICATION	
			STANDARD / HEAVY DUTY	EXTREME SERVICE
MITSUBISHI	MS280-2	63,580	25 Series	30 Series
MITSUBISHI	MS380	88,220	40 Series	50 Series
MITSUBISHI	MS580	134,640	50 Series	70 Series
MITSUBISHI	MS1600	363,000	115 Series	145 Series
MUSTANG	ME1503	3,759	04 Series	04 Series
MUSTANG	ME2203	4,453	04 Series	04 Series
MUSTANG	ME3003	6,875	04 Series	04 Series
MUSTANG	ME3503	7,715	04 Series	05 Series
MUSTANG	ME3703	8,215	04 Series	05 Series
MUSTANG	ME5003ZT	10,582	05 Series	05 Series
MUSTANG	ME6003	12,566	05 Series	10 Series
MUSTANG	ME7503ZT	16,193	10 Series	10 Series
MUSTANG	ME8003	17,584	10 Series	15 Series
MUSTANG	ME12002	25,397	15 Series	15 Series
New Holland	E15	3,240	04 Series	04 Series
New Holland	EC15	3,300	04 Series	04 Series
New Holland	E27	5,557	04 Series	04 Series
New Holland	EC25	6,060	04 Series	04 Series
New Holland	E30	6,680	04 Series	04 Series
New Holland	EC35	7,960	04 Series	05 Series
New Holland	EC45	10,320	05 Series	05 Series
New Holland	E50	10,275	05 Series	05 Series
New Holland	E70	16,400	10 Series	10 Series
New Holland	E80	17,600	10 Series	15 Series
New Holland	EC130	32,192	15 Series	20 Series
New Holland	EC160	36,800	20 Series	25 Series
New Holland	EW200*	40,785	20 Series	25 Series
New Holland	EW220*	46,300	20 Series	25 Series
New Holland	EC215	46,970	20 Series	25 Series
New Holland	E215	47,000	20 Series	25 Series
New Holland	EC240	55,556	25 Series	30 Series
New Holland	EW160*	65,580	30 Series	30 Series
New Holland	EC270	69,934	30 Series	40 Series
New Holland	EC350	77,382	30 Series	40 Series
New Holland	EC450	109,300	40 Series	50 Series
New Holland	EC600	139,500	50 Series	70 Series
NOBAS	UB13M	28,820	15 Series	20 Series
NOBAS	UB1236	68,200	30 Series	40 Series

XS SYSTEM

SERIES RECOMMENDATION CHART FOR EXCAVATORS

MANUFACTURER	MODEL	OPERATING WEIGHT IN LBS.	RECOMMENDED NOSE SIZE BASED ON	
			APPLICATION	
			STANDARD / HEAVY DUTY	EXTREME SERVICE
O & K	EB10	2,200	04 Series	04 Series
O & K	EB12	2,640	04 Series	04 Series
O & K	EB14	3,080	04 Series	04 Series
O & K	RH1.1	3,080	04 Series	04 Series
O & K	RH1.2	3,080	04 Series	04 Series
O & K	RH1.15	3,300	04 Series	04 Series
O & K	EB16	3,520	04 Series	04 Series
O & K	RH1.20	4,620	04 Series	04 Series
O & K	EB22	4,840	04 Series	04 Series
O & K	RH1.3	5,940	04 Series	04 Series
O & K	RH1.30	6,600	04 Series	04 Series
O & K	EB36	7,700	04 Series	05 Series
O & K	RH2.4	9,460	04 Series	05 Series
O & K	RH1.45	9,680	04 Series	05 Series
O & K	MH2.5C	10,780	05 Series	05 Series
O & K	EB68	14,850	05 Series	10 Series
O & K	RH2.8C	17,600	10 Series	15 Series
O & K	MH2.8C	18,700	10 Series	15 Series
O & K	MH3	20,460	10 Series	15 Series
O & K	RH2.10	21,340	10 Series	15 Series
O & K	MH2.10	21,780	10 Series	15 Series
O & K	RH2.12	24,640	15 Series	15 Series
O & K	MH4	25,300	15 Series	15 Series
O & K	RH4CS	28,820	15 Series	20 Series
O & K	MH4CS	29,700	15 Series	20 Series
O & K	RH4	29,898	15 Series	20 Series
O & K	RHCITY	30,140	15 Series	20 Series
O & K	MH5	31,900	15 Series	20 Series
O & K	MHCITY	31,900	15 Series	20 Series
O & K	MHPLUS	32,120	15 Series	20 Series
O & K	RHPLUS	32,120	15 Series	20 Series
O & K	MH4PLUS	34,760	20 Series	20 Series
O & K	MH6	39,600	20 Series	25 Series
O & K	RH6	41,140	20 Series	25 Series
O & K	RH5	42,020	20 Series	25 Series
O & K	MH5SA4	44,000	20 Series	25 Series
O & K	RH6-20	44,660	20 Series	25 Series
O & K	MH6PMS	45,100	20 Series	25 Series

XS SYSTEM SERIES RECOMMENDATION CHART FOR EXCAVATORS

MANUFACTURER	MODEL	OPERATING WEIGHT IN LBS.	RECOMMENDED NOSE SIZE BASED ON	
			APPLICATION	
			STANDARD / HEAVY DUTY	EXTREME SERVICE
O & K	RH6Vario	47,960	25 Series	25 Series
O & K	MH6HD	48,620	25 Series	30 Series
O & K	RH6-22	48,840	25 Series	30 Series
O & K	RH6PMS	51,480	25 Series	30 Series
O & K	RH8	54,560	25 Series	30 Series
O & K	RH9G	64,020	25 Series	30 Series
O & K	RH9PMS	66,220	30 Series	40 Series
O & K	RH9	68,200	30 Series	40 Series
O & K	RH11	69,740	30 Series	40 Series
O & K	RH12	73,040	30 Series	40 Series
O & K	RH12D	74,756	30 Series	40 Series
O & K	RH16	83,160	30 Series	40 Series
O & K	RH18	85,580	30 Series	40 Series
O & K	RH20	103,400	40 Series	50 Series
O & K	RH25PMS	108,680	40 Series	50 Series
O & K	RH30C	134,420	50 Series	70 Series
O & K	RH30D	156,200	70 Series	85 Series
O & K	RH30E	169,400	70 Series	85 Series
O & K	RH40C	181,060	70 Series	85 Series
O & K	RH40D	195,800	85 Series	85 Series
O & K	RH40E	220,000	85 Series	115 Series
O & K	RH75C	272,800	115 Series	115 Series
O & K	RH90C	347,600	115 Series	145 Series
O & K	RH120C	514,800	145 Series	250 Series
PEL JOB	EB10	2,310	04 Series	04 Series
PEL JOB	EB12.4	3,080	04 Series	04 Series
PEL JOB	EB14.4	3,080	04 Series	04 Series
PEL JOB	EB16.4	3,630	04 Series	04 Series
PEL JOB	EB22	5,280	04 Series	04 Series
PEL JOB	LS286	6,600	04 Series	04 Series
PEL JOB	EB306	7,040	04 Series	04 Series
PEL JOB	EB406	8,096	04 Series	05 Series
PEL JOB	LS386	8,580	04 Series	05 Series
PEL JOB	LS502	10,780	05 Series	05 Series
PEL JOB	EB68	14,960	05 Series	10 Series
PEL JOB	EB706	15,400	05 Series	10 Series
PEL JOB	EB706P	15,400	05 Series	10 Series
PINGON	14C	28,600	15 Series	20 Series

XS SYSTEM SERIES RECOMMENDATION CHART FOR EXCAVATORS

MANUFACTURER	MODEL	OPERATING WEIGHT IN LBS.	RECOMMENDED NOSE SIZE BASED ON	
			APPLICATION	
			STANDARD / HEAVY DUTY	EXTREME SERVICE
PINGON	14CH	28,600	15 Series	20 Series
PINGUELY	TM50	16,500	10 Series	15 Series
PINGUELY	PM90	19,360	10 Series	15 Series
PMI	450C	21,120	10 Series	15 Series
PMI	810R	25,300	15 Series	15 Series
PMI	815	34,100	15 Series	20 Series
PMI	815R	34,100	15 Series	20 Series
PMI	818D	42,900	20 Series	25 Series
PMI	818R	42,900	20 Series	25 Series
PMI	822D	47,300	20 Series	25 Series
PMI	825D	58,300	25 Series	30 Series
PMI	830	72,600	30 Series	40 Series
PMI	834B	77,000	30 Series	40 Series
PMI	840	88,000	40 Series	50 Series
PMI	2200	96,800	40 Series	50 Series
POCLAIN	CK08	1,540	04 Series	04 Series
POCLAIN	CK13	3,080	04 Series	04 Series
POCLAIN	CK15	3,300	04 Series	04 Series
POCLAIN	CK25	5,060	04 Series	04 Series
POCLAIN	CK28	6,160	04 Series	04 Series
POCLAIN	CK36	7,700	04 Series	05 Series
POCLAIN	CK50	10,780	05 Series	05 Series
POCLAIN	CK62	12,980	05 Series	10 Series
POCLAIN	488C	18,920	10 Series	15 Series
POCLAIN	488	19,756	10 Series	15 Series
POCLAIN	60PLB	25,080	15 Series	15 Series
POCLAIN	61P	25,960	15 Series	20 Series
POCLAIN	60CKB	28,380	15 Series	20 Series
POCLAIN	61CK	29,040	15 Series	20 Series
POCLAIN	70CKB	29,260	15 Series	20 Series
POCLAIN	588	29,920	15 Series	20 Series
POCLAIN	81P	30,140	15 Series	20 Series
POCLAIN	688B	30,800	15 Series	20 Series
POCLAIN	81PL	31,460	15 Series	20 Series
POCLAIN	75PB	31,680	15 Series	20 Series
POCLAIN	81P2A	31,900	15 Series	20 Series
POCLAIN	75CKB	33,880	15 Series	20 Series
POCLAIN	81CK	35,200	20 Series	20 Series

XS SYSTEM

SERIES RECOMMENDATION CHART FOR EXCAVATORS

MANUFACTURER	MODEL	OPERATING WEIGHT IN LBS.	RECOMMENDED NOSE SIZE BASED ON	
			APPLICATION	
			STANDARD / HEAVY DUTY	EXTREME SERVICE
POCLAIN	81CKE	35,200	20 Series	20 Series
POCLAIN	888B	37,620	20 Series	25 Series
POCLAIN	90PB	37,840	20 Series	25 Series
POCLAIN	85CKB	39,380	20 Series	25 Series
POCLAIN	90B	43,340	20 Series	25 Series
POCLAIN	90CKB	43,340	20 Series	25 Series
POCLAIN	90CKE	44,220	20 Series	25 Series
POCLAIN	1088B	45,540	20 Series	25 Series
POCLAIN	1188	46,860	20 Series	25 Series
POCLAIN	125PB	49,940	25 Series	30 Series
POCLAIN	125CKB	53,900	25 Series	30 Series
POCLAIN	125B	56,100	25 Series	30 Series
POCLAIN	1288	56,320	25 Series	30 Series
POCLAIN	160CK	66,000	30 Series	40 Series
POCLAIN	170CKB	70,180	30 Series	40 Series
POCLAIN	170C	71,720	30 Series	40 Series
POCLAIN	220B	93,060	40 Series	50 Series
POCLAIN	220CKB	95,480	40 Series	50 Series
POCLAIN	350CKB	140,800	50 Series	70 Series
POCLAIN	350B	147,400	50 Series	85 Series
POCLAIN	350CK	156,200	70 Series	85 Series
POCLAIN	600	261,800	85 Series	115 Series
POCLAIN	610CK	261,800	85 Series	115 Series
POCLAIN	1000CK	411,400	115 Series	145 Series
RICHIER	P43	26,400	15 Series	20 Series
RICHIER	P42	26,620	15 Series	20 Series
RICHIER	H42	27,940	15 Series	20 Series
RICHIER	H43	28,600	15 Series	20 Series
RICHIER	P45	30,580	15 Series	20 Series
RICHIER	H45	32,780	15 Series	20 Series
RICHIER	H45CL	34,100	15 Series	20 Series
RICHIER	P48	37,400	20 Series	25 Series
RICHIER	H48CL	42,900	20 Series	25 Series
RICHIER	H48CK	44,000	20 Series	25 Series
RICHIER	H52	66,000	30 Series	40 Series
ROCK	20	3,080	04 Series	04 Series
ROCK	40	5,500	04 Series	04 Series
ROCK	70	16,500	10 Series	15 Series

XS SYSTEM SERIES RECOMMENDATION CHART FOR EXCAVATORS

MANUFACTURER	MODEL	OPERATING WEIGHT IN LBS.	RECOMMENDED NOSE SIZE BASED ON	
			APPLICATION	
			STANDARD / HEAVY DUTY	EXTREME SERVICE
ROCK	100	35,200	20 Series	20 Series
ROCK	135	46,200	20 Series	25 Series
ROCK	150	50,600	25 Series	30 Series
ROCK	200	63,800	25 Series	30 Series
SACMI	AZ90	19,360	10 Series	15 Series
SAMSUNG	SE120W	25,300	15 Series	15 Series
SAMSUNG	SE130W	26,400	15 Series	20 Series
SAMSUNG	SE130	28,600	15 Series	20 Series
SAMSUNG	SE130LC-2	30,040	15 Series	20 Series
SAMSUNG	SE130W-2	31,260	15 Series	20 Series
SAMSUNG	SE130LCM-2	31,840	15 Series	20 Series
SAMSUNG	SE200W	40,700	20 Series	25 Series
SAMSUNG	SE200	42,680	20 Series	25 Series
SAMSUNG	SE210	42,900	20 Series	25 Series
SAMSUNG	SE210W-2	43,220	20 Series	25 Series
SAMSUNG	SE210LC-2	49,550	25 Series	30 Series
SAMSUNG	SE280	59,840	25 Series	30 Series
SAMSUNG	SE280LC-2	66,020	30 Series	40 Series
SAMSUNG	SE350LC-2	81,330	30 Series	40 Series
SAMSUNG	SE450LC-2	99,200	40 Series	50 Series
SCHAEFF	HR2	2,860	04 Series	04 Series
SCHAEFF	HR02	3,080	04 Series	04 Series
SCHAEFF	HR4	4,620	04 Series	04 Series
SCHAEFF	HR8	7,260	04 Series	04 Series
SCHAEFF	HML15A	10,560	05 Series	05 Series
SCHAEFF	HML25X	14,300	05 Series	10 Series
SCHAEFF	HS40C	14,300	05 Series	10 Series
SCHAEFF	HML30E	15,180	05 Series	10 Series
SCHAEFF	HS40D	15,388	05 Series	10 Series
SCHAEFF	HR30	16,500	10 Series	15 Series
SCHAEFF	HML30F	16,940	10 Series	15 Series
SCHAEFF	HR25X	17,160	10 Series	15 Series
SCHAEFF	HML40A	20,460	10 Series	15 Series
SCHAEFF	HR40	20,900	10 Series	15 Series
SENNEBOGEN	212M	24,640	15 Series	15 Series
SENNEBOGEN	S405B	25,300	15 Series	15 Series
SENNEBOGEN	SM12SL	27,060	15 Series	20 Series
SENNEBOGEN	212RLC	27,940	15 Series	20 Series

XS SYSTEM

SERIES RECOMMENDATION CHART FOR EXCAVATORS

MANUFACTURER	MODEL	OPERATING WEIGHT IN LBS.	RECOMMENDED NOSE SIZE BASED ON	
			APPLICATION	
			STANDARD / HEAVY DUTY	EXTREME SERVICE
SENNEBOGEN	S517B	29,040	15 Series	20 Series
SENNEBOGEN	SM13SL	30,800	15 Series	20 Series
SENNEBOGEN	214M	31,020	15 Series	20 Series
SENNEBOGEN	SR13SL	31,900	15 Series	20 Series
SENNEBOGEN	SM15SL	34,540	20 Series	20 Series
SENNEBOGEN	214RLC	34,980	20 Series	20 Series
SENNEBOGEN	SR15SL	39,160	20 Series	25 Series
SENNEBOGEN	216M	39,600	20 Series	25 Series
SENNEBOGEN	S755B	39,600	20 Series	25 Series
SENNEBOGEN	216RLC	40,700	20 Series	25 Series
SENNEBOGEN	SM20SL	41,800	20 Series	25 Series
SENNEBOGEN	SR20SL	46,200	20 Series	25 Series
SENNEBOGEN	S1105M	48,400	25 Series	25 Series
SENNEBOGEN	S1105RLC	51,700	25 Series	30 Series
SENNEBOGEN	SR28SL	63,800	25 Series	30 Series
SUMITOMO	LS2600	24,200	15 Series	15 Series
SUMITOMO	LS2650	26,620	15 Series	20 Series
SUMITOMO	LS2800	40,700	20 Series	25 Series
SUMITOMO	LS3400	49,500	25 Series	30 Series
SUMITOMO	LS4300	65,120	30 Series	30 Series
SUMITOMO	LS5800	91,300	40 Series	50 Series
TAKEUCHI	TB007	1,667	04 Series	04 Series
TAKEUCHI	TB108	2,033	04 Series	04 Series
TAKEUCHI	TB15	3,054	04 Series	04 Series
TAKEUCHI	TB015	3,418	04 Series	04 Series
TAKEUCHI	TB016	3,524	04 Series	04 Series
TAKEUCHI	TB020	4,544	04 Series	04 Series
TAKEUCHI	TB025	5,958	04 Series	04 Series
TAKEUCHI	TB125	6,165	04 Series	04 Series
TAKEUCHI	TB035	7,625	04 Series	05 Series
TAKEUCHI	TB135	7,636	04 Series	05 Series
TAKEUCHI	TB045	10,092	05 Series	05 Series
TAKEUCHI	TB145	10,582	05 Series	05 Series
TAKEUCHI	TB53FR	12,581	05 Series	10 Series
TAKEUCHI	TB070	16,050	10 Series	10 Series
TAKEUCHI	TB175	17,230	10 Series	15 Series
TAKEUCHI	TB1140	31,878	15 Series	20 Series
TEREX (O&K)	HR1.6	3,638	04 Series	04 Series

XS SYSTEM SERIES RECOMMENDATION CHART FOR EXCAVATORS

MANUFACTURER	MODEL	OPERATING WEIGHT IN LBS.	RECOMMENDED NOSE SIZE BASED ON	
			APPLICATION	
			STANDARD / HEAVY DUTY	EXTREME SERVICE
TEREX (O&K)	HR2.0	4,300	04 Series	04 Series
TEREX (O&K)	HR14	6,285	04 Series	04 Series
TEREX (O&K)	HR16/16E	7,720	04 Series	05 Series
TEREX (O&K)	HR3.7	8,047	04 Series	05 Series
TEREX (O&K)	HR18	10,320	05 Series	05 Series
TEREX (O&K)	HR20	12,458	05 Series	10 Series
TEREX (O&K)	HR32	17,420	10 Series	15 Series
TEREX (O&K)	HM42	24,230	15 Series	15 Series
TEREX (O&K)	HR42	27,563	15 Series	20 Series
TEREX (O&K)	TXC 140LC-1	30,600	15 Series	20 Series
TEREX (O&K)	1705M (wheeled)	34,833	20 Series	20 Series
TEREX (O&K)	TXC 175LC-1	38,360	20 Series	25 Series
TEREX (O&K)	1905M (wheeled)	39,903	20 Series	25 Series
TEREX (O&K)	2205M (wheeled)	46,517	20 Series	25 Series
TEREX (O&K)	TXC 225LC-1	47,400	20 Series	25 Series
TEREX (O&K)	TXC 255LC-1	54,200	25 Series	30 Series
TEREX (O&K)	TXC 300LC-2	67,240	30 Series	40 Series
TEREX (O&K)	TXC 340LC-1	76,500	30 Series	40 Series
TEREX (O&K)	TXC 420LC-1	92,815	40 Series	50 Series
TEREX (O&K)	TXC 470LC-1	104,900	40 Series	50 Series
TEREX (O&K)	RH30F FS	185,410	70 Series	85 Series
TEREX (O&K)	RH30F BH	196,650	85 Series	85 Series
TEREX (O&K)	RH40E FS	222,460	85 Series	115 Series
TEREX (O&K)	RH40E BH	224,870	85 Series	115 Series
TEREX (O&K)	RH90C FS	358,690	115 Series	145 Series
TEREX (O&K)	RH90C BH	363,760	115 Series	145 Series
TEREX (O&K)	RH120E BH	584,220	250 Series	XS340
TEREX (O&K)	RH120E FS	584,220	250 Series	XS340
TEREX (O&K)	RH170 FS	811,290	XS340	XS390
TEREX (O&K)	RH170BH	824,520	250 Series	XS390
TEREX (O&K)	RH200 FS	1,113,320	XS390	XS640
TEREX (O&K)	RH200 BH	1,122,140	XS390	XS640
TEREX (O&K)	RH400 FS	2,216,500	XS800	-
THOMAS EQUIP.	T-15S	3,219	04 Series	04 Series
THOMAS EQUIP.	T-15V	3,351	04 Series	04 Series
THOMAS EQUIP.	T-25S	5,842	04 Series	04 Series
THOMAS EQUIP.	T-35S	7,121	04 Series	04 Series
THOMAS EQUIP.	T-45S	9,832	05 Series	05 Series

XS SYSTEM

SERIES RECOMMENDATION CHART FOR EXCAVATORS

MANUFACTURER	MODEL	OPERATING WEIGHT IN LBS.	RECOMMENDED NOSE SIZE BASED ON	
			APPLICATION	
			STANDARD / HEAVY DUTY	EXTREME SERVICE
THOMAS EQUIP.	T-75	16,380	10 Series	10 Series
THOMAS EQUIP.	T-75AC	16,380	10 Series	10 Series
UNKAUF	KMB114	3,080	04 Series	04 Series
UNKAUF	KMB220	5,434	04 Series	04 Series
UNKAUF	KMB113	6,380	04 Series	04 Series
UNKAUF	KMB112LS	13,860	05 Series	10 Series
UNKAUF	KMB770	18,150	10 Series	15 Series
VERMEER	CX216	3,307	04 Series	04 Series
VERMEER	CX218	3,637	04 Series	04 Series
VERMEER	CX219Z	3,968	04 Series	04 Series
VERMEER	CX224	5,291	04 Series	04 Series
VERMEER	CX229	6,063	04 Series	04 Series
VERMEER	CX234	6,725	04 Series	04 Series
VERMEER	CX254	11,023	05 Series	05 Series
VOLVO	EC15XR	3,451	04 Series	04 Series
VOLVO	EC15B XR	3,261	04 Series	04 Series
VOLVO	EC15BXTV (variable width)	3,539	04 Series	04 Series
VOLVO	EC15XTV	3,826	04 Series	04 Series
VOLVO	EC20BXTV (variable width)	3,848	04 Series	04 Series
VOLVO	EC20XTV	4,134	04 Series	04 Series
VOLVO	EC25	5,874	04 Series	04 Series
VOLVO	ECR28	6,012	04 Series	04 Series
VOLVO	EC30	6,536	04 Series	04 Series
VOLVO	EC35	7,546	04 Series	05 Series
VOLVO	ECR38	7,355	04 Series	05 Series
VOLVO	EC45	9,680	04 Series	05 Series
VOLVO	EC45Pro	9,729	05 Series	05 Series
VOLVO	EC55	10,830	05 Series	05 Series
VOLVO	EC55BPro	12,125	05 Series	10 Series
VOLVO	EW55B	11,685	05 Series	05 Series
VOLVO	ECR58	11,926	05 Series	10 Series
VOLVO	ECR88	17,879	10 Series	15 Series
VOLVO	EC130	27,940	15 Series	20 Series
VOLVO	EW130	28,556	15 Series	20 Series
VOLVO	EW130-C	29,700	15 Series	20 Series
VOLVO	EC130-C	30,150	15 Series	20 Series
VOLVO	EC140BLC	33,450	15 Series	20 Series
VOLVO	EW150	31,680	15 Series	20 Series

XS SYSTEM SERIES RECOMMENDATION CHART FOR EXCAVATORS

MANUFACTURER	MODEL	OPERATING WEIGHT IN LBS.	RECOMMENDED NOSE SIZE BASED ON	
			APPLICATION	
			STANDARD / HEAVY DUTY	EXTREME SERVICE
VOLVO	EW150-C	32,132	15 Series	20 Series
VOLVO	EC150	32,340	15 Series	20 Series
VOLVO	EC150-C	32,532	15 Series	20 Series
VOLVO	EC150LC	36,290	20 Series	25 Series
VOLVO	EW170*	37,000	20 Series	25 Series
VOLVO	EW160B (wheeled)	38,580	20 Series	25 Series
VOLVO	EC160BLC	42,340	20 Series	25 Series
VOLVO	EW200	38,500	20 Series	25 Series
VOLVO	EC200	43,654	20 Series	25 Series
VOLVO	EW180 (wheeled)	43,660	20 Series	25 Series
VOLVO	EW230B	44,103	20 Series	25 Series
VOLVO	EC210BLC	49,260	25 Series	30 Series
VOLVO	EC230	48,356	25 Series	25 Series
VOLVO	EC210B-LR	51,200	25 Series	30 Series
VOLVO	EC230B	52,920	25 Series	30 Series
VOLVO	EC240BLC	56,820	25 Series	30 Series
VOLVO	EC240B-LR	60,790	25 Series	30 Series
VOLVO	EC290BLC	65,930	30 Series	40 Series
VOLVO	EC300	66,220	30 Series	40 Series
VOLVO	EC290B-LR	69,680	30 Series	40 Series
VOLVO	EC330BLC	78,430	30 Series	40 Series
VOLVO	EC360BLC	84,580	30 Series	40 Series
VOLVO	EC420	94,600	40 Series	50 Series
VOLVO	EC450	99,200	40 Series	50 Series
VOLVO	EC460BLC	105,580	40 Series	50 Series
VOLVO	EC650	146,200	50 Series	70 Series
VOLVO	EC700B	155,670	70 Series	85 Series
WEIMAR	M700	15,620	05 Series	10 Series
WEIMAR	R700	17,600	10 Series	15 Series
WEIMAR	M1000	24,200	15 Series	15 Series
YANMAR	SV08-1 (w ROPS bar)	2,348	04 Series	04 Series
YANMAR	B12	2,420	04 Series	04 Series
YANMAR	B17E	2,970	04 Series	04 Series
YANMAR	B15-3	3,307	04 Series	04 Series
YANMAR	VIO15-2A	3,704	04 Series	04 Series
YANMAR	B22	4,840	04 Series	04 Series
YANMAR	VIO20-3	4,910	04 Series	04 Series
YANMAR	B27	5,940	04 Series	04 Series

XS SYSTEM SERIES RECOMMENDATION CHART FOR EXCAVATORS

MANUFACTURER	MODEL	OPERATING WEIGHT IN LBS.	RECOMMENDED NOSE SIZE BASED ON	
			APPLICATION	
			STANDARD / HEAVY DUTY	EXTREME SERVICE
YANMAR	VIO27-3	6,306	04 Series	04 Series
YANMAR	B37	7,040	04 Series	04 Series
YANMAR	VIO35-3	7,740	04 Series	05 Series
YANMAR	YB401W	8,360	04 Series	05 Series
YANMAR	B50	9,790	05 Series	05 Series
YANMAR	VIO45-5	10,121	05 Series	05 Series
YANMAR	B5	11,000	05 Series	05 Series
YANMAR	VIO55-5	11,312	05 Series	05 Series
YANMAR	VIO75-A	17,530	10 Series	15 Series
YANMAR	B7-5A	17,706	10 Series	15 Series
YANMAR	SV100	20,730	10 Series	15 Series
YGRY	Y12B	2,640	04 Series	04 Series
YGRY	Y14B	3,080	04 Series	04 Series
YGRY	Y22	5,434	04 Series	04 Series