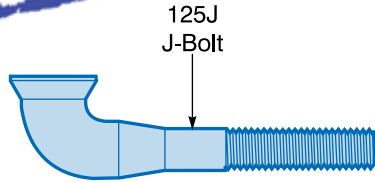


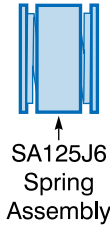
J6 J-Bolt Assemblies

NEW

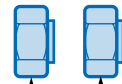


125J
J-Bolt

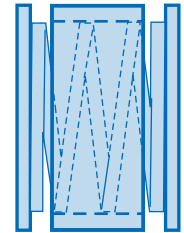
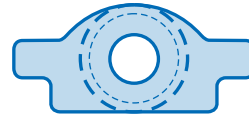
SFA125J6



SA125J6
Spring
Assembly



LN125
Nyloc Nuts



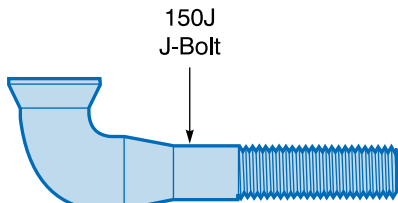
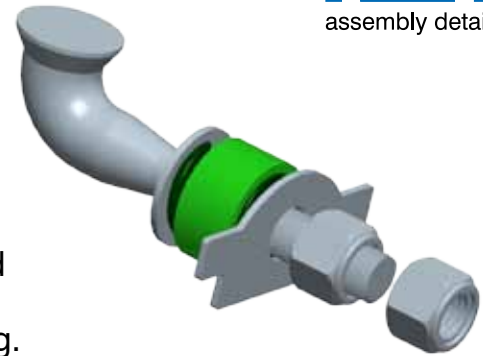
assembly detail

Part #: SFA125J6

Description: J-bolt assembly

Weight: 8.0 lbs. (3.6 kgs.)

Specifics: J-bolt assembly that replaces SFA125J4. Spring assembly is welded and utilizes a steel sleeve that helps prevent over-compression of the spring.



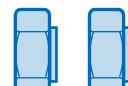
150J
J-Bolt

SFA150J6

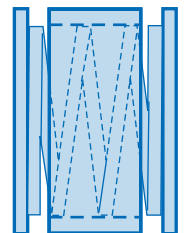
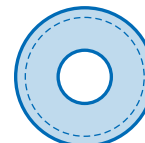
FOR 500 TON CLASS AND ABOVE



SA150J6
Spring
Assembly



LN150
Nyloc Nuts



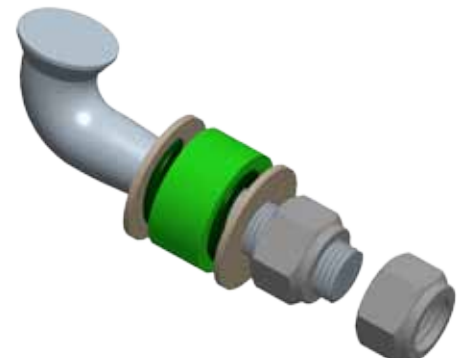
assembly detail

Part #: SFA150J6

Description: J-bolt assembly

Weight: 11.9 lbs. (5.4 kgs.)

Specifics: J-bolt assembly that replaces SFA150J4. Spring assembly is welded and utilizes a steel sleeve that helps prevent over-compression of the spring.



Hensley Customer Service

Toll Free US / Canada
Phone: (888) 406-6262
Fax: (888) 241-3274

All Other Locations
Phone: (972) 406-6262
Fax: (972) 241-3274

www.hensleyind.com

Safety first: Hensley Industries recommends that you use a soft-face hammer and ANSI-approved (Z87.1) eye protection when using our products.

© 2010 Hensley Industries, Inc.

Access to any specific item is subject to your individual dealer classification.