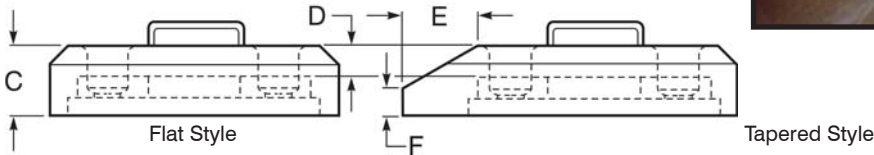
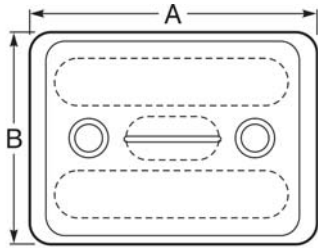




BOLT-ON WEAR RUNNERS and BASES

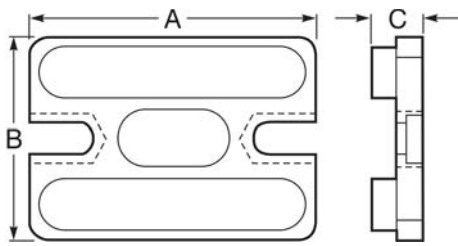
- SPECIFICS:**
- High-wear area protection
 - Extends equipment life
 - Bolt-on design
 - Fast and easy change-outs
 - Position end to end & side to side

Hensley Wear Runners are designed for high-wear areas on all your earth-moving / earth-hauling equipment, reducing down time during change-outs and to allow being positioned end to end and side to side. After initial installation of the wear runner weld-on base, change-outs are fast and easy with Hensley's bolt-on design. For speed and ease in change-outs and extended life for all your equipment, switch to **Hensley Wear Runners** today.



WEAR RUNNERS

WEAR RUNNERS	STYLE	DIMENSIONS - INCHES (MM)						WEIGHT lbs. / kgs.	BASE	FASTENER	SOCKET SIZE
		A	B	C	D	E	F				
B8X8WR175	Flat	8 (203)	8 (203)	1.75 (44)	.75 (19)	N/A	N/A	20.0 / 9.1	8X8B	B8X125BN	15/16 (24)
B10X7WRS	Flat	10 (254)	7 (178)	2.94 (75)	1.25 (32)	N/A	N/A	35.5 / 16.1	10X7B	58X125BN	15/16 (24)
B10X8WR175	Flat	10 (254)	8 (203)	1.75 (44)	.75 (19)	N/A	N/A	25.5 / 11.6	10X8B	58X125BN	15/16 (24)
B10X10WR275	Flat	10 (254)	10 (254)	2.75 (70)	1 (25)	N/A	N/A	40.0 / 18.1	10X10B	115BN or 115BLN	1.5 (38)
B10X10WR5	Flat	10 (254)	10 (254)	5 (127)	3 (76)	N/A	N/A	100.0 / 45.4	10X10B	115BN or 115BLN	1.5 (38)
B12X9WR	Flat	12 (305)	9 (229)	3 (76)	1.25 (32)	N/A	N/A	49.0 / 22.2	12X9B	115BN or 115BLN	1.5 (38)
B12X9WR4	Flat	12 (305)	9 (229)	4 (102)	2.25 (57)	N/A	N/A	73.0 / 33.1	12X9B	115BN or 115BLN	1.5 (38)
B12X12WR	Flat	12 (305)	12 (305)	2.94 (75)	1.125 (29)	N/A	N/A	71.8 / 32.6	12X12B	115BN or 115BLN	1.5 (38)
B14X9WR275T	Tapered	14 (356)	9 (229)	2.75 (70)	1 (25)	3 (76)	1.25 (32)	52.5 / 23.8	12X9B	115BN or 115BLN	1.5 (38)
B14X9WR4T	Tapered	14 (356)	9 (229)	3.94 (100)	1.94 (49)	2.75 (70)	1.25 (32)	94.3 / 42.8	12X9B	115BN or 115BLN	1.5 (38)
B14X10WR275T	Tapered	14 (356)	10 (254)	2.75 (70)	1 (25)	3 (76)	1.25 (32)	58.0 / 26.3	12X10B	115BN or 115BLN	1.5 (38)
B14X10WR4T	Tapered	14 (356)	10 (254)	3.94 (100)	1.94 (49)	2.75 (70)	1.25 (32)	97.8 / 44.4	12X10B	115BN or 115BLN	1.5 (38)
B16X10WR3T	Tapered	16 (406)	10 (254)	2.94 (75)	.5 (13)	4.75 (121)	.75 (19)	74.5 / 33.8	12X10B	115BN or 115BLN	1.5 (38)
AB16X10WR3T w / laminite	Tapered	16 (406)	10 (254)	2.94 (75)	.5 (13)	4.75 (121)	.75 (19)	74.5 / 33.8	12X10B	115BN or 115BLN	1.5 (38)

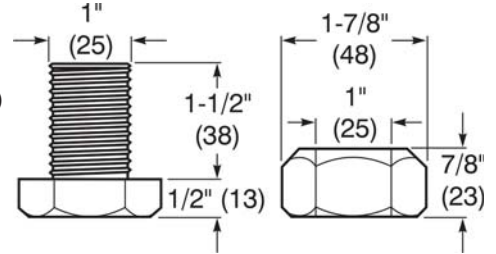


BASES					
BASE	DIMENSIONS - INCHES (MM)			WEIGHT lbs. / kgs.	WEAR RUNNER
	A	B	C		
8X8B	6.9 (174)	6.9 (174)	.91 (23)	7.0 / 3.2	B8X8WR175
10X7B	8.37 (213)	5.37 (136)	1.8 (46)	11.0 / 5.0	B10X7WRS
10X8B	8.9 (225)	6.9 (175)	.91 (23)	9.7 / 4.4	B10X8WR175
10X10B	8.37 (213)	8.37 (213)	1.8 (46)	24.0 / 10.9	B10X10WR275 / B10X10WR5
12X9B	10.38 (263)	4.75 (121)	1.8 (46)	22.0 / 10.0	B12X9WR / B12X9WR4 B14X9WE275T / B14X9WR47
12X10B	10.38 (263)	8.37 (213)	1.8 (46)	28.0 / 12.7	B14X10WR275T / B14X10WR4T B16X10WR3T / AB16X10WR3T
12X12B	10.38 (263)	10.38 (263)	1.8 (46)	36.0 / 16.3	B12X12WR



BOLT ASSEMBLIES

115BN bolt & nut assembly (shown)
 115BLN fine thread bolt & crimp
 nut assembly (not shown)



Hensley Industries, Inc.
 2108 Joe Field Road • Dallas, TX 75229
Customer Service
 Toll Free U.S./Canada (888) 406-6262
 All other Locations (972) 406-6262
Hensley Attachments
 (800) 433-3144 (817) 477-3167
 www.hensleyind.com



YOUR AUTHORIZED HENSLEY DEALER