

QUICK COUPLERS

Mount multiple types of attachments quickly and safely without any modification.

MECHANICAL



Mechanical coupler designed for utility and construction size machines with operating weights of 2 to 40 tons.

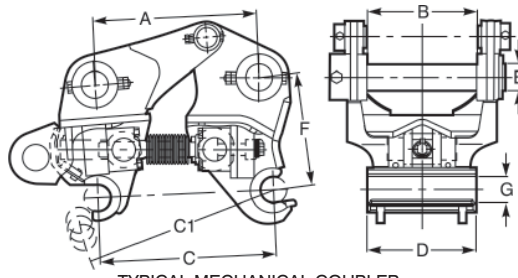
SERIES II HYDRAULIC



Series II Hydraulic coupler with an automatic locking system designed for excavators with operating weights of 12 to 40 tons.



COUPLER SPECIFICATIONS



TYPICAL MECHANICAL COUPLER

MODEL	MCJKAL21HA	MCJKAL31HA	MCJKAL41HA	MCJKAL61HA	MCJKAL101HA	MCJKAL161HA	MCJKAL201HA	MCJKAL301HA	MCJKAL401HA	
Dimensions inches (mm)	A	7.36 - 8.23 (187 - 209)	11.42 - 12.08 (290 - 307)	9.72 - 10.90 (247 - 277)	12.04 - 13.50 (306 - 343)	15.31 - 17.28 (389 - 439)	15.51 - 17.20 (394 - 437)	17.51 - 19.80 (445 - 503)	20.00 - 22.56 (508 - 573)	22.13 - 24.80 (562 - 630)
	B	5.70 (145)	6.38 (162)	6.85 (174)	7.95 (202)	10.27 (261)	12.26 (311.5)	12.87 (327)	16.22 (412)	18.94 (481)
	C	5.51 - 9.84 (140 - 250)	9.84 - 13.00 (250 - 330)	7.08 - 13.00 (180 - 330)	8.85 - 15.35 (225 - 390)	12.20 - 21.26 (310 - 540)	12.40 - 20.82 (315 - 529)	14.48 - 22.44 (368 - 570)	15.83 - 24.61 (402 - 625)	18.00 - 27.40 (457 - 696)
	C1	-9.84 (-250)	-13.90 (-353)	-13.00 (-330)	-15.35 (-390)	-21.26 (-540)	-20.82 (-529)	-22.44 (-570)	-24.61 (-625)	-27.40 (-696)
	D	4.80 (122)	6.29 (160)	5.51 (140)	6.41 (163)	8.50 (216)	8.50 (216)	11.02 (280)	13.58 (345)	14.57 (370)
	E	Ø1.57 (Ø40)	Ø1.57 - Ø2.16 (Ø40 - Ø55)	Ø1.77 (Ø45)	Ø1.97 (Ø50)	Ø2.56 (Ø65)	Ø3.15 (Ø80)	Ø3.54 (Ø90)	Ø3.54 (Ø90)	Ø4.33 (Ø110)
	F	7.08 (180)	8.27 (210)	8.27 (210)	9.64 (245)	11.30 (287)	12.48 (317)	13.80 (350)	15.60 (396)	17.17 (436)
	G	Ø1.57 (Ø40)	Ø1.57 - Ø2.16 (Ø40 - Ø55)	Ø1.77 (Ø45)	Ø1.97 (Ø50)	Ø2.56 (Ø65)	Ø3.15 (Ø80)	Ø3.54 (Ø90)	Ø3.54 (Ø90)	Ø4.33 (Ø110)
	Weight* lbs. (kgs.) (without pins)	66.0 (30.0)	121.0 (55.0)	110.0 (50.0)	187.0 (85.0)	286.0 (130.0)	441.0 (200.0)	573.0 (260.0)	970.0 (440.0)	1421.0 (645.0)
Machine size class (tons)	2 - 3	backhoe loaders	4 - 5	6 - 9	10 - 12	15 - 18	20 - 27	30 - 35	40	

*Pins are included.

*1: The above is subject to technical alteration without notice.

*2: Other manufacturer's attachments are acceptable.

MODEL	JKAL105-2	JKAL165-2	JKAL205-2	JKAL305-2	JKAL405-2	
Dimensions inches (mm)	A	15.1 - 16.2 (384 - 412)	16.8 - 17.9 (427 - 455)	18.1 - 19.4 (460 - 493)	19.7 - 21.1 (500 - 536)	21.9 - 23.3 (557 - 592)
	B	10.3 (261)	12.3 (311.5)	12.8 (326.5)	13.6 (346)	14.6 (372)
	C	14.8 - 19.7 (375 - 500)	15.8 - 20.8 (401 - 528)	18.0 - 22.4 (458 - 570)	20.2 - 26.5 (514 - 674)	21.1 - 27.1 (537 - 690)
	D	10.0 (258)	12.2 (310)	12.8 (325)	13.6 (345)	14.6 (370)
	E	Ø2.4 (Ø60)	Ø2.7 (Ø70)	Ø3.1 (Ø80)	Ø3.5 (Ø90)	Ø3.9 (Ø100)
	F	11.0 (280)	13.0 (331)	13.4 (340)	15.4 (392)	17.1 (435)

Weight*
lbs. (kgs.)
(without pins)

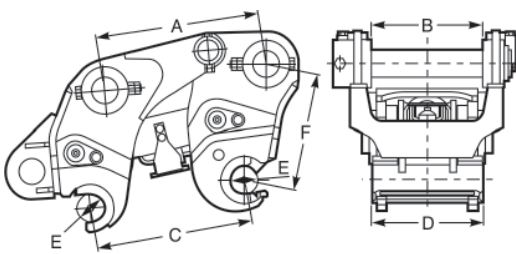
Machine size
class (tons)

385.9 (175)	496.0 (225)	650.5 (295)	959.2 (435)	1389.0 (630)
----------------	----------------	----------------	----------------	-----------------

*Complete coupler package includes one set of pins, hydraulic kit and safety switch box.

*1: The above is subject to technical alteration without prior notice.

*2: Other manufacturer's attachments are acceptable.



TYPICAL HYDRAULIC COUPLER



YOUR MUROTO DEALER FOR THE AMERICAS

Hensley Industries, Inc.

An ISO9001:2000 & 14001:2004 Certified Company • 2108 Joe Field Road • Dallas, Texas 75229 U.S.A. • (888) 406 - 6262 (972) 406 - 6262

Hensley Attachments

A Division of Hensley Industries, Inc. • 800 South Fifth • Mansfield, Texas 76063 U.S.A • (800) 433 - 3144 (817) 477 - 3167

www.hensleyind.com

Copyright © 2016 Hensley Industries, Inc. This publication is protected under the copyright laws of the United States. Unauthorized duplication or distribution is prohibited.