



# HYDRAULIC BREAKERS



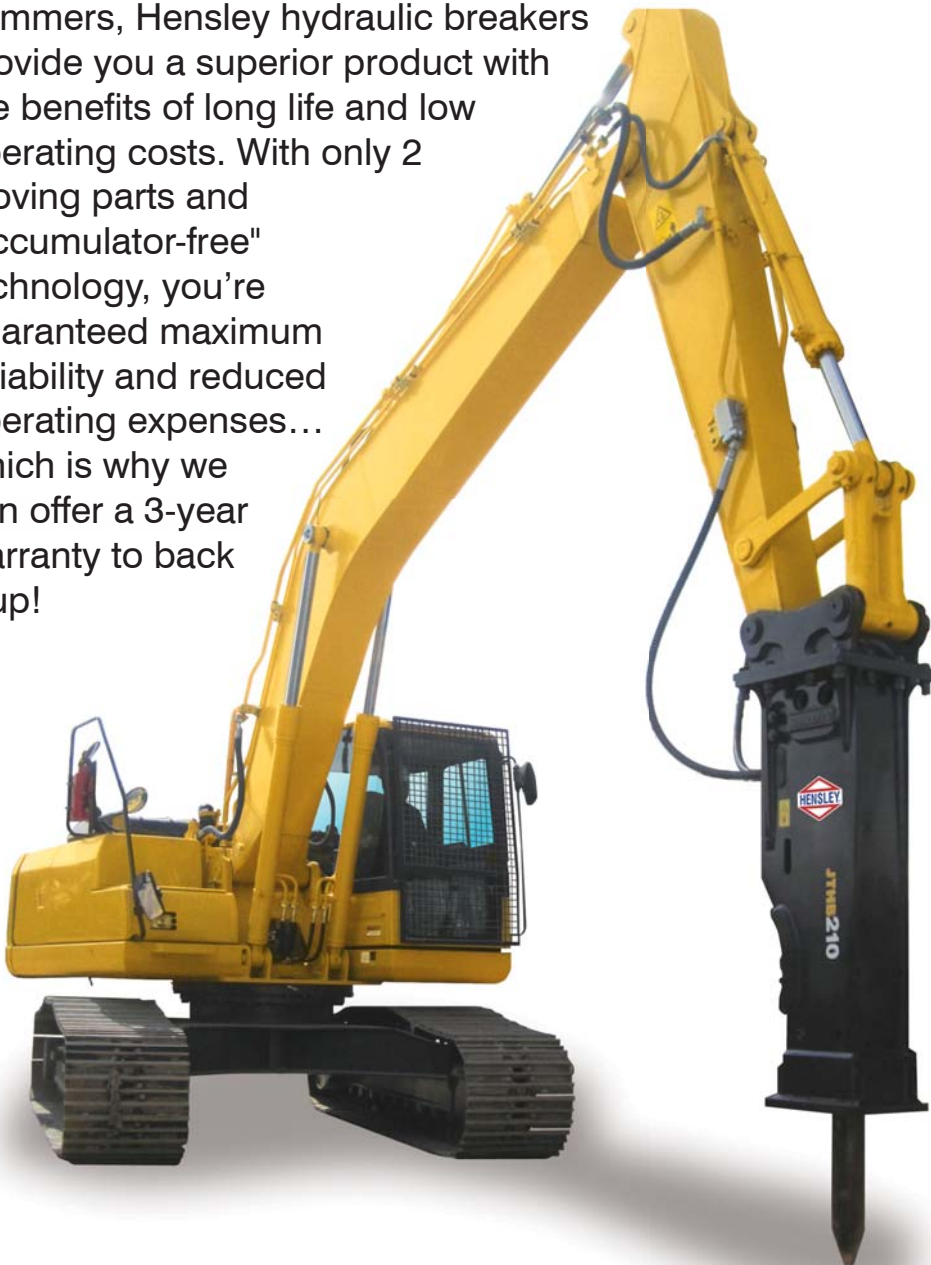
IT'S A BIG WORLD  
LET'S MOVE IT!

MOVE

# BREAKER FEATURES/BENEFITS

Whether you're tearing out a reinforced concrete abutment, scaling a tunnel, or running a pedestal-boom at the quarry, Hensley hydraulic breakers provide you superior impact energy for exceptional performance in a variety of rock and concrete demolition applications. The high impact power of the JTHB Series breakers is delivered through a combination of hydraulic and nitrogen gas energy without the use of accumulators. This same nitrogen gas design provides recoil absorption to minimize shock to the system while storing energy for the next blow, contributing less stress and fatigue to the machine and the operator for a friendlier experience!

With a simple, yet efficient design which utilizes up to 30-percent fewer parts than some competitive hammers, Hensley hydraulic breakers provide you a superior product with the benefits of long life and low operating costs. With only 2 moving parts and "accumulator-free" technology, you're guaranteed maximum reliability and reduced operating expenses... which is why we can offer a 3-year warranty to back it up!



## High Impact Energy

A combination of 70% nitrogen gas and 30% hydraulic energy provides powerful impact for high-performance productivity

## Simple Design, Longer Life

With only 2 moving parts and a built-in dust prevention system, you're assured maximum uptime and reliability

## Versatile for Any Carrier

Low sensitivity to back pressure means the Hensley breaker can be used with virtually any carrier

## Fewer Moving Parts

Up to 30% fewer parts than the competition for reduced operating expense and less maintenance...wow!

## Environmentally-Friendly

Box brackets with noise-reduction design...minimally invasive in urban areas

## Extensive Range of Tools

For versatility in a variety of specialty applications

## Ready-To-Go

Includes your choice of a point, complete tool kit, hoses, nitrogen gas charging tool and pin & bushing kit



## Nitrogen Gas Cushion

Absorbs piston recoil to reduce vibration for less stress on the machine and operator

## Simple Control Valve

Flow-through design for efficient control while also minimizing hydraulic surge

There's a complete range of Hensley hydraulic breakers designed to fit your application, from the smallest of carriers like the Toro® "Dingo" and mini-excavators, to skid-steers and full-size excavators. With our innovative side plate and bracket system design, one breaker can be used on several machines with a simple pin and bushing change. So, contact your nearest Hensley distributor or visit us on the web to learn more about the advantages of these superior hydraulic breakers!

## Patented Tie Rod Design

Short, fully-enclosed tie rods with internal vibration dampeners and patented thread design resist the self-destruction inherent to hydraulic breakers

## 50/50 Piston-to-Chisel Weight Ratio

With long stroke for greater energy transfer and less recoil

## "Hydraulic Cushioning"

helps prevent damage from occurring when inadvertently triggering the breaker to fire

## "Accumulator-Free" Technology

Less hassle, less to go wrong for reduced maintenance and lower operating expense

## Port for Under Water Applications

Standard on every breaker, quick and convenient for pressurized air

## Auto-Lube Options

Mount to the breaker or machine to eliminate time spent manually greasing the breaker

## Dual Retainer Pins

Ensures proper alignment and spreads wear around the tool for longer chisel and bushing life

## Special Hardened Alloy Points

For increased durability in a wide range of applications

**3-Year Warranty**  
**Quite simply, the best warranty on the market!**

# BREAKER SPECIFICATIONS

## 15 MODELS TO CHOOSE FROM

9.8'  
(3.0m)

8.2'  
(2.5m)

6.6'  
(2.0m)

Large Range

5.0'  
(1.5m)

Medium Range

3.3'  
(1.0m)

Mini Range

1.6'  
(0.5m)



Model Type	JTHB08-3	JTHB10-3	JTHB20-3	JTHB30-3	JTHB40-3	JTHB50-3	
Impact Energy Class: lbf-ft (Nm)	100 (136)	150 (203)	250 (339)	350 (475)	550 (745)	825 (1118)	
Impact Frequency: bpm	930-1300	700-1200	600-1150	550-1000	580-1060	550-1000	
Working Weight							
1-Piece Side Plates - lb (kg)	165 (75)	187 (85)	242 (110)	418 (190)	485 (220)	672 (305)	
2-Piece Side Plates - lb (kg)	-	-	-	463 (210)	562 (255)	694 (315)	
Box Bracket - lb (kg)	198 (90)	264 (120)	364 (165)	562 (255)	705 (320)	849 (385)	
Operating Pressure	psi	870-1,885	1,015-2,030	1,160-2,175	1,450-2,175	1,450-2,320	1,450-2,320
	Mpa	6-13	7-14	8-15	10-15	10-16	10-16
Oil Flow	gpm	4.75-6.6	5.3-7.9	5.3-9.2	6.6-11.9	7.9-14.5	9.2-15.8
	L/min	18-25	20-30	20-35	25-45	30-55	35-60
Chisel Diameter - inch (mm)	1.57 (40)	1.77 (45)	2.0 (50)	2.28 (58)	2.5 (64)	3.0 (75)	
Hose Size - inch	3/8	1/2	1/2	1/2	1/2	1/2	
Base Carrier - mt	.7-1.5	1-2	1.5-2.5	2.4-4	3-4.5	3.8-6	

# BREAKER SPECIFICATIONS

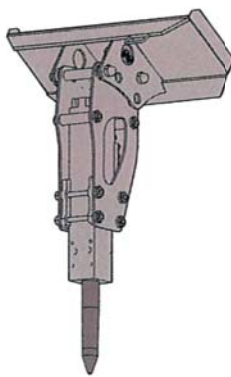


JTHB60-3	JTHB70-3	JTHB120-2	JTHB160-3	JTHB210-3	JTHB290-3	JTHB-350-3	JTHB450-3	JTHB650-3
1000 (1356)	1500 (2034)	2000 (2712)	3,000 (4067)	4,500 (6101)	5500 (7457)	7,500 (10,169)	10,000 (13,558)	12,000 (16,270)
600-1050	550-1000	450-700	430-600	490-630	370-490	380-450	370-470	370-470
805 (365)	-	-	-	-	-	-	-	-
772 (350)	992 (450)	-	-	-	-	-	-	-
904 (410)	1,257 (570)	2,425 (1100)	2,734 (1240)	3,968 (1800)	4,960 (2250)	5,952 (2700)	7,937 (3600)	10,031 (4550)
1,450-2,320	1,450-2,320	1,740-2,465	1,740-2,465	2,030-2,610	2,030-2,610	1,885-2,610	2,030-2,610	2,030-2,610
10-16	10-16	12-17	12-17	14-18	14-18	13-18	14-18	14-18
10.5-18.5	11.9-21.1	18.5-29.0	26.4-37.0	42.2-52.8	42.2-55.5	47.5-60.7	63.4-79.2	74.0-103.0
40-70	45-80	70-110	100-140	160-200	160-210	180-230	240-300	280-390
3.0 (75)	3.75 (95)	4.5 (115)	4.5 (115)	5.3 (135)	5.5 (140)	5.75 (146)	6.3 (160)	7.0 (178)
3/4	3/4	3/4	3/4	1	1	1	1 1/4	1 1/4
5.5-8	6-11	8-15	14-20	18-25	20-30	27-40	38-50	45-70

# MOUNTING BRACKETS AND TOOL TYPES



1-Piece Side Plates

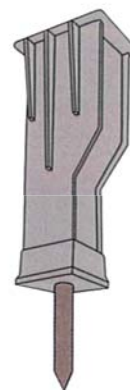


Skid Steer Brackets



2-Piece Side Plates

- Heavy duty
- Ideal for trenching



Box Bracket

- Available for all models
- Suitable for work in residential area

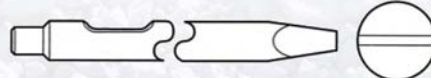
BLUNT



MOIL POINT



IN LINE WIDE CHISEL



CROSS FLAT



CONICAL POINT



ASPHALT CUTTER



IN LINE FLAT



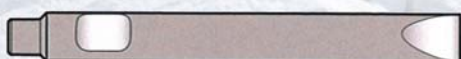
CROSS CUT WIDE CHISEL



DECK BUSTER



EXTENDED LENGTH / REACH



FROST WEDGE



Post Drivers



Stems & Pads





# OPERATING TECHNIQUES

1 Stop operation if hose swings irregularly



2 Do Not operate in water/mud without proper air supply

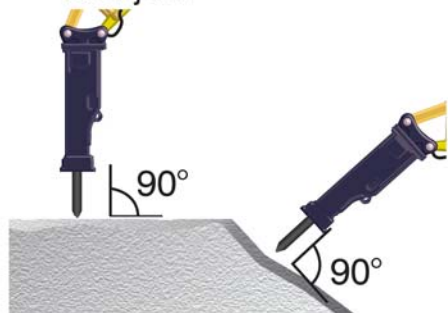


3 Do Not operate cylinder at full stroke



Will cause damage to work equipment

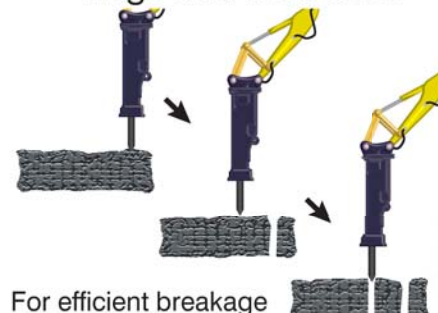
4 Keep 90 degree angle to object



5 No more than 1 minute continuous hammering



6 Break from edge of large and hard rock



For efficient breakage

7 Stop hammering when object is broken



8 Do NOT pry with chisel



9 Do NOT hit objects with force



10 Do NOT swipe with breaker



11 Do NOT move rocks with breaker



12 Do NOT lift objects with breaker





Hensley Industries, Inc. has been manufacturing and marketing ground engaging tools, buckets and specialized attachments since 1947. We are committed to providing the best service and highest quality products in the world. Our dedication to excellence allows us to help those who use it in the field every day.

## **HENSLEY INDUSTRIES, INC.**

2108 Joe Field Road  
Dallas, Texas 75229, USA

### **CUSTOMER SERVICE**

#### **G.E.T & CUTTING EDGES**

USA/CANADA - (888) 406-6262  
ALL OTHER LOCATIONS - +1 (972) 406-6262

#### **BUCKETS & ATTACHMENTS**

USA/CANADA - (800) 433-3144  
ALL OTHER LOCATIONS - +1 (817) 477-3167

**WWW.HENSLEYIND.COM**



Safety First! Hensley Industries recommends that you use appropriate personal protective equipment and follow proper safety procedures when using our products.