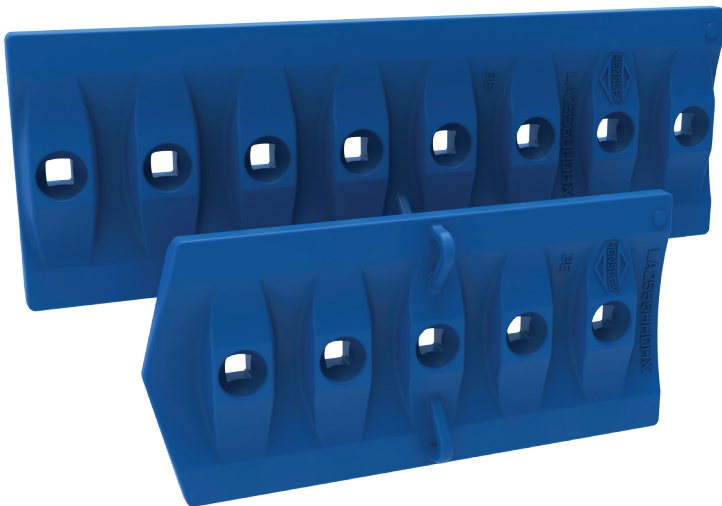




# HENSLEY ANNOUNCES THE RELEASE OF THE D475 CAST STEEL BLADES

Hensley has released cast steel center blades for Komatsu D475 semi-U and full U blade assemblies. Adding these new cast steel center blades to Hensley's portfolio makes possible to offer complete set of cast steel blades for D475 semi-U and full-U blade assemblies.



- ▷ Available for D475 semi-u and full-u blade assemblies
- ▷ Through hardened Hensley's 3E alloy steel
- ▷ Long wear life - low maintenance costs
- ▷ LA2555HHDHXX - end
- ▷ LA2556HHDHX - center

**HENSLEY...YOUR WEAR SOLUTIONS SPECIALIST!**