

**GETpro™**  
TOOTH SYSTEM

# GETpro™

TOOTH SYSTEM



## APPLICATIONS

- ▷ CONSTRUCTION
- ▷ MINING
- ▷ QUARRY
- ▷ TRENCHING
- ▷ UTILITY

## MACHINE TYPES

- ▷ EXCAVATORS
- ▷ WHEEL LOADERS

Tooth systems are often viewed as interchangeable from one manufacturer to another. This is not the case with GETpro by Hensley. We have built a truly unique product that is stronger and longer lasting with additional safety-enhancing features.\* We did this by listening to our customers and spending years figuring out the correct solution to their issues.

With GETpro we have created a new standard for what GET should do for your business.



## SAFETY ENHANCEMENTS

- ▷ Intuitive locking system
- ▷ Pry slots on tooth and wear cap for easier removal of worn parts
- ▷ Low torque pin for easy tooth changes
- ▷ Weights marked on all parts



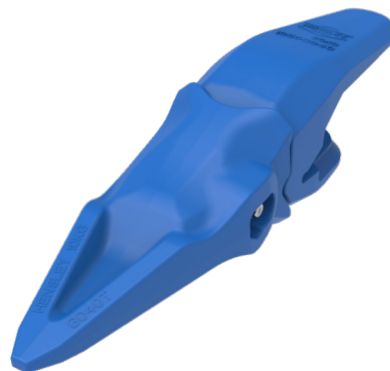
## PRODUCTIVITY

- ▷ 10% - 15% increased usable wear material
- ▷ Improved penetration by up to 15%
- ▷ Wear indicators on wear cap and fastener
- ▷ Rotatable tooth for extended life
- ▷ Wear material added to adapter legs for longer wear life
- ▷ Designed to stay sharp for the life of the tooth



## RELIABILITY

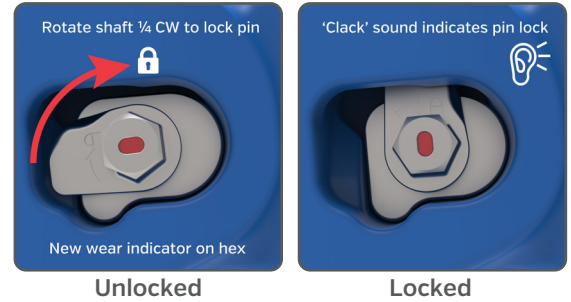
- ▷ 10% stronger design reduces breakage
- ▷ Improved pin design prevents unlocking after extended use
- ▷ Optimized design reduces wear on adapters
- ▷ Improved stability through tighter fit design of tooth to adapter



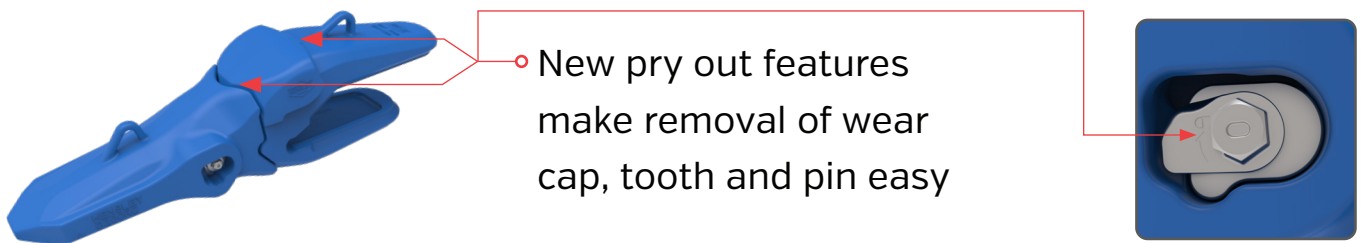
Performance will vary by application and environment. Operating conditions, installation process and maintenance are outside the control of Hensley Industries.

## SAFETY ENHANCEMENTS

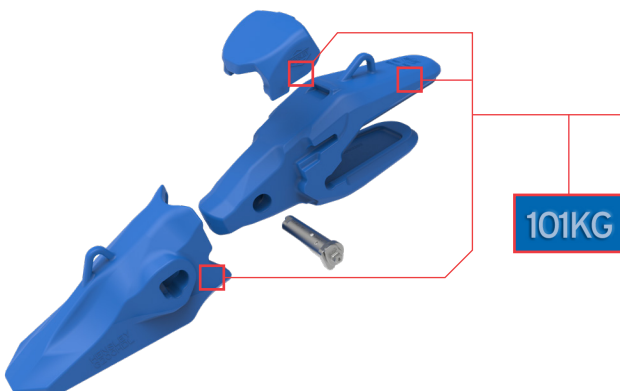
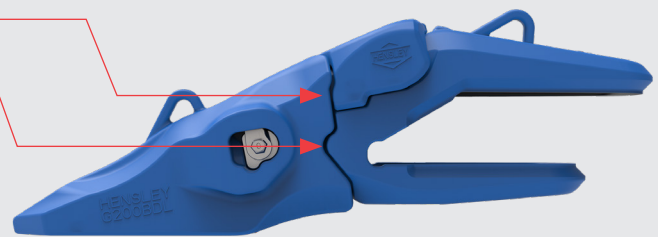
- ▶ Push out ramp on tooth to help dislodge the fastener when unlocking
- ▶ Audible “Clack” sound indicating when locked
- ▶ Pin designed for multiple tooth changes
- ▶ Wear indicator on hex head of pin
- ▶ Metric socket for locking and unlocking
- ▶ Simple ¼ rotation to lock/unlock



TOOTH SIZE	SOCKET NEEDED
004-005	8MM
010-015	10MM
020-030	12MM
040-050	14MM
070-085	16MM
120-400	19MM

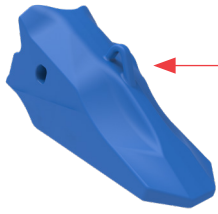


- Interlocking parts assist when replacing wear cap and teeth

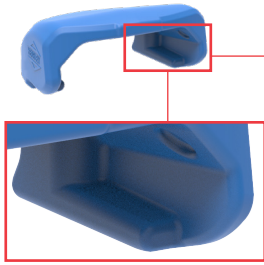


- Weight Indicators are cast into each part in Kilograms. This allows for easier handling and proper tool selection during assembly

## RELIABILITY

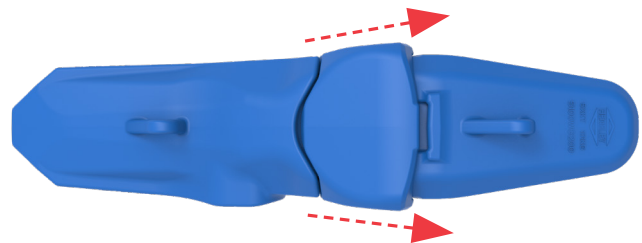
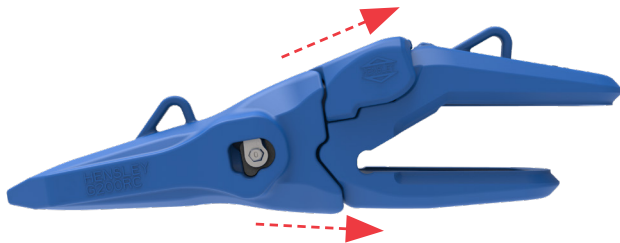
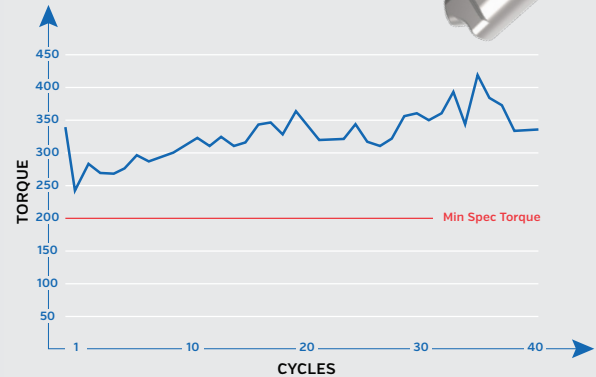


- 10% increased strength and less stress tooth design over XS tooth system

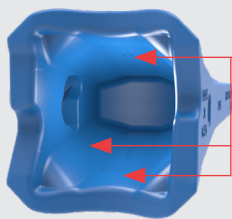


- Redesigned wear cap has interior stabilizing leg up to 50% stronger than XS tooth system

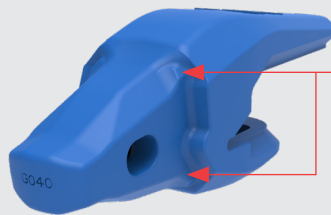
New locking system has no torque loss after multiple uses ensuring pin remains locked.



New tooth and wear cap redesigned to deflect material flow away from the adapter improving the overall assembly wear life



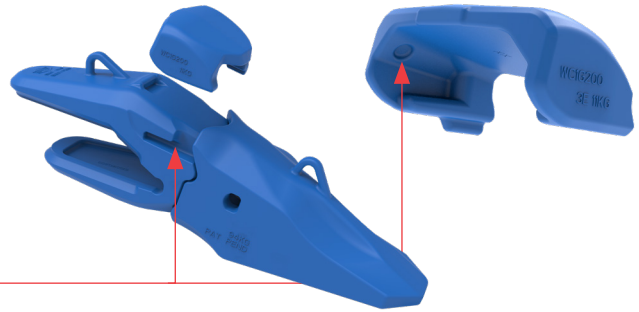
- Multi and elevated fit surfaces provide better tooth fit



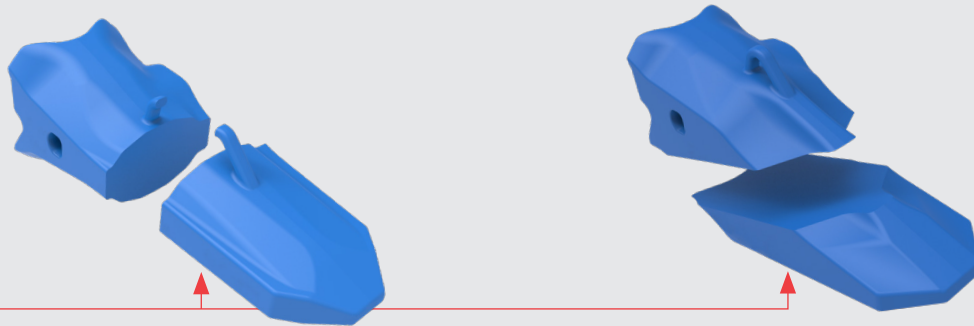
- Twist control reduces load on fastener

## PRODUCTIVITY

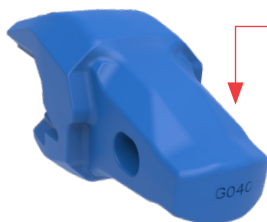
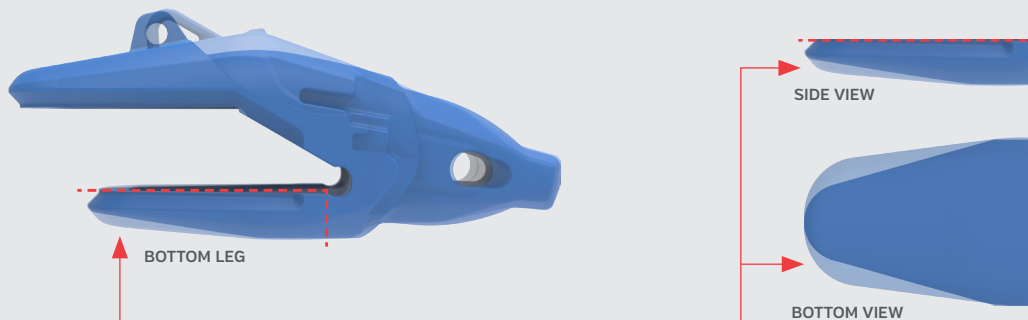
- Wear indicators let you know when to change out parts to maximize efficiency and cost.



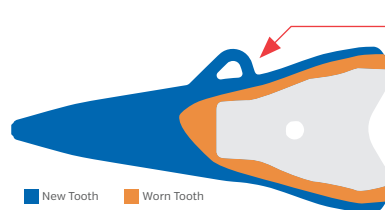
- Wear material increased 10 - 15% in high wear areas



- Optimized usable wear material in high wear areas

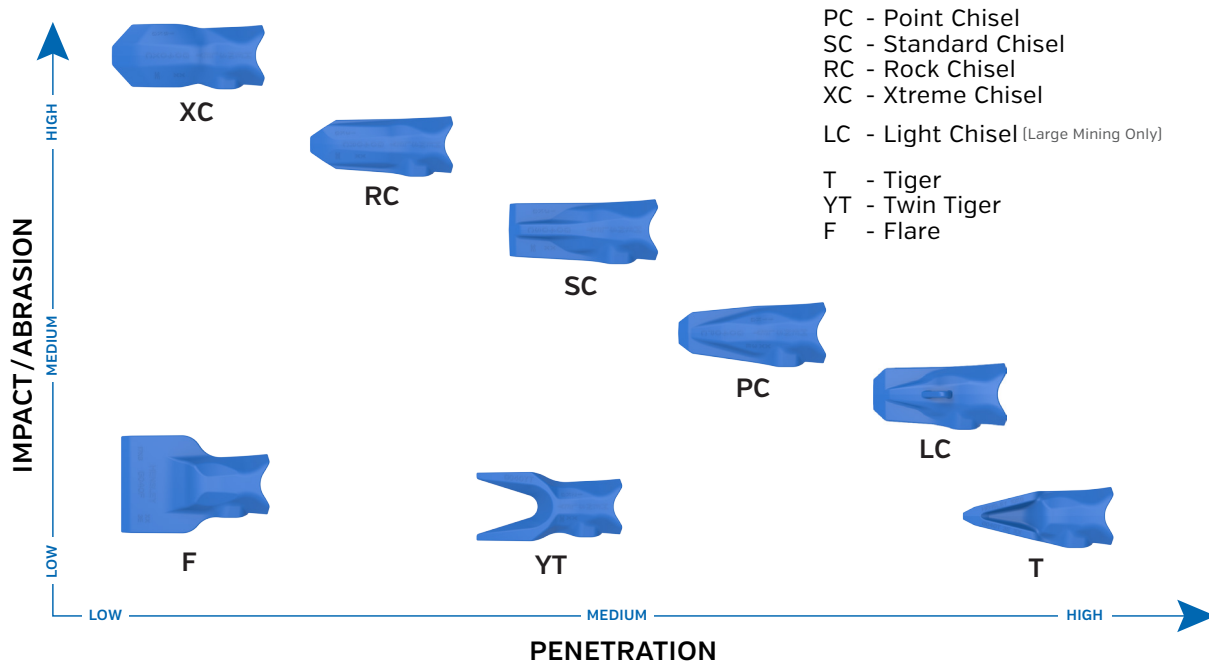


- Symmetrical nose allows for tooth rotation to extend wear life

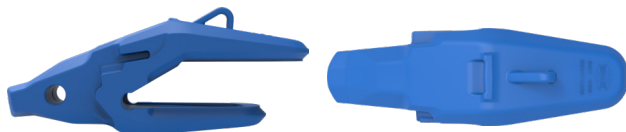


- Designed to stay sharp throughout tooth life

## EXCAVATOR TEETH

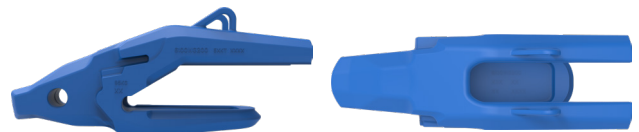


## EXCAVATOR ADAPTERS

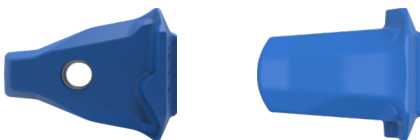


**1 3/4 HALF LEG** [Mining]

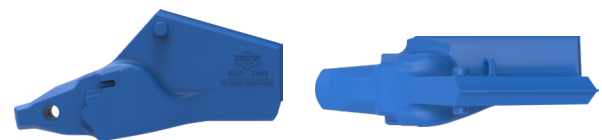
**1 1/2 HALF LEG** [Construction]



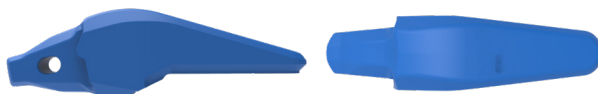
**STRADDLE LEG**



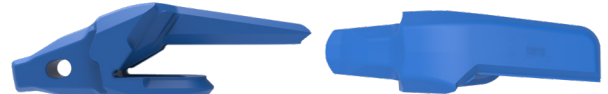
**WELD-ON NOSE**



**CAST CORNER**



**FLUSH MOUNT**



**NOTCH**

*Note: Not all adapter/tooth styles are available for all series.*

## EXCAVATOR TOOTH SIZES AVAILABLE

Series	Machine Class	Part Number							
		T	YT	PC	LC	SC	RC	XC	F
G004	004					G004SC			
G005	005					G005SC			
G010	010					G010SC			
G015	015	G015T	G015YT			G015SC	G015RC		G015F
G020	020	G020T	G020YT			G020SC	G020RC		G020F
G025	025	G025T	G025YT			G025SC	G025RC		G025F
G030	030	G030T	G030YT			G030SC	G030RC		G030F
G040	040	G040T	G040YT	G040PC		G040SC	G040RC		G040F
G050	050	G050T	G050YT	G050PC		G050SC	G050RC		G050F
G070	070			G070PC		G070SC	G070RC		
G085	085	G085T	G085YT			G085SC	G085RC	G085XC	
G120	120	G120T	G120YT	G120PC		G120SC	G120RC		
G200	200	G200T		G200PC	G200LC		G200RC		
G300	300	G300T		G300PC	G300LC		G300RC	G300XC	
G400	400	G400T		G400PC	G400LC		G400RC		

## ADAPTER PART # SELECTOR

Choose the number from each of the tables below to determine the proper part #.

**A** 5    **B** 120    **C** W    **D** G200    **E** R

A	ADAPTER TYPE
1	CENTER & RH/LH BEVEL 1 ½ LEG
2	CENTER FLUSH
3	CORNER NOTCHED RH/LH
4	CENTER BOTTOM LEG
5	CENTER & RH/LH BEVEL 1 ¾ LEG
6	STRADDLE BEVEL
7	CENTER SQUARE
8	CENTER BOLT-ON / MECHANICAL
9	STRADDLE SQUARE
10	STRADDLE FLUSH
11	CORNER CLOSED
12	CORNER BOLT-ON RH/LH/MECHANICAL
13	CORNER CAST T
14	CORNER CAST RH/LH

B	LIP THICKNESS MM*
	16
	25
	30
	40
	45
	50
	60
	75
	80
	90
	100
	120
	140

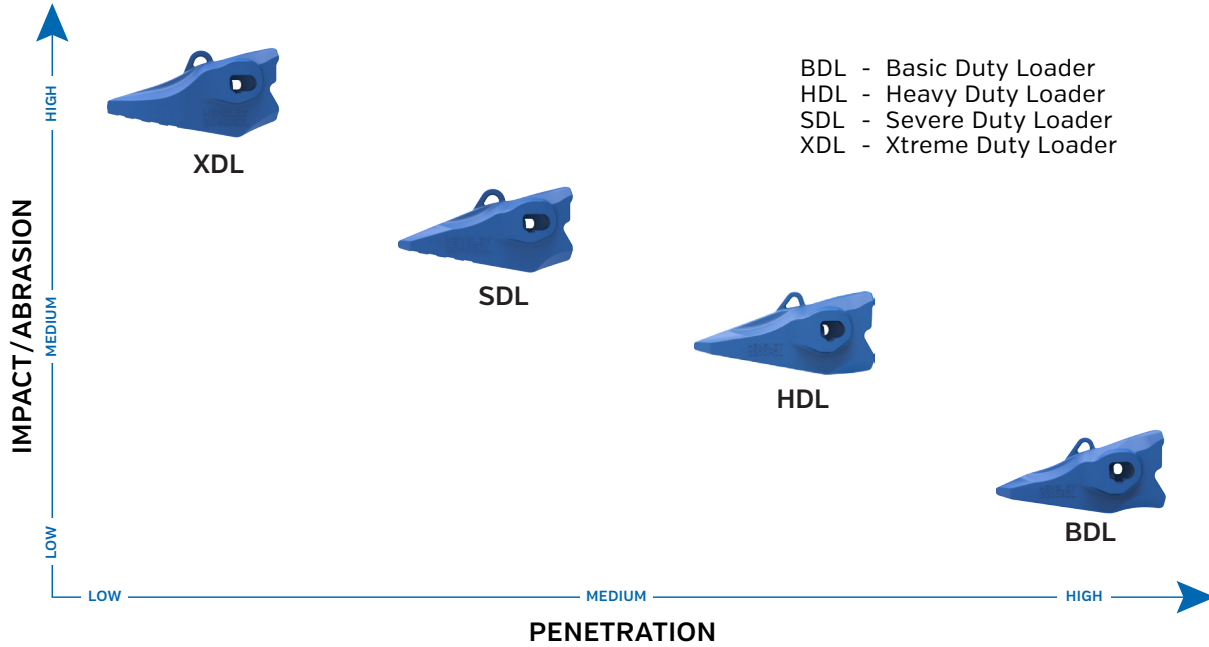
\*Additional lip sizes available

C	WEAR CAP USE
W	WITH WEAR CAP
	NO WEAR CAP

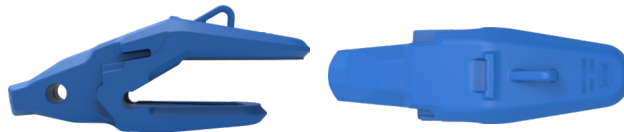
D	SERIES
	G004
	G005
	G010
	G015
	G020
	G025
	G030
	G040
	G050
	G070
	G085
	G120
	G200
	G300
	G400

E	ORIENTATION
R	RIGHT
L	LEFT
CR	CORNER RIGHT
CL	CORNER LEFT

## LOADER TEETH

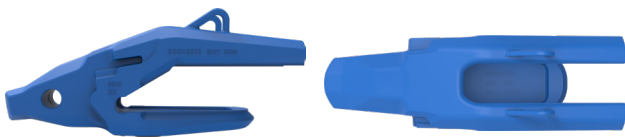


## LOADER ADAPTERS

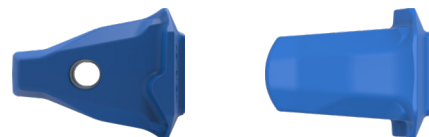


**1 3/4 HALF LEG** (Mining)

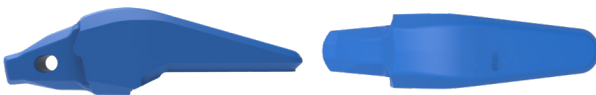
**1 1/2 HALF LEG** (Construction)



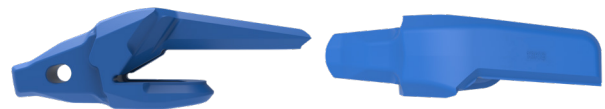
**STRADDLE LEG**



**WELD-ON NOSE**



**FLUSH MOUNT**



**NOTCH**

Note: Not all adapter/tooth styles are available for all series.



## LOADER TOOTH SIZES AVAILABLE

Series	Machine Class	Part Number			
		BDL	HDL	SDL	XDL
G010	010		G010HDL		
G015	015		G015HDL		
G020	020		G020HDL		
G025	025		G025HDL		
G030	030		G030HDL		
G040	040		G040HDL	G040SDL	
G050	050		G050HDL	G050SDL	
G070	070		G070HDL		
G085	085		G085HDL	G085SDL	G085XDL
G120	120		G120HDL	G120SDL	G120XDL
G200	200	G200BDL	G200HDL	G200SDL	G200XDL

## ADAPTER PART # SELECTOR

Choose the number from each of the tables below to determine the proper part #.

A	B	C	D	E
5	120	W	G200	R

A	ADAPTER TYPE
1	CENTER & RH/LH BEVEL 1 ½ LEG
2	CENTER FLUSH
3	CORNER NOTCHED RH/LH
4	CENTER BOTTOM LEG
5	CENTER & RH/LH BEVEL 1 ¾ LEG
6	STRADDLE BEVEL
7	CENTER SQUARE
8	CENTER BOLT-ON / MECHANICAL
9	STRADDLE SQUARE
10	STRADDLE FLUSH
11	CORNER CLOSED
12	CORNER BOLT-ON RH/LH/MECHANICAL
13	CORNER CAST T
14	CORNER CAST RH/LH

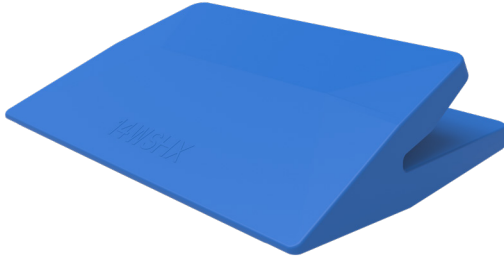
B	LIP THICKNESS MM*
	16
	25
	30
	40
	45
	50
	60
	75
	80
	90
	100
	120
	140

\*Additional lip sizes available

C	WEAR CAP USE
W	WITH WEAR CAP
	NO WEAR CAP

D	SERIES
	G004
	G005
	G010
	G015
	G020
	G025
	G030
	G040
	G050
	G070
	G085
	G120
	G200
	G300
	G400

E	ORIENTATION
R	RIGHT
L	LEFT
CR	CORNER RIGHT
CL	CORNER LEFT



## **WELD-ON LIP SHROUDS**

- ▶ Shrouds for 1.5" lips up to 4.75" lips
- ▶ At least a 300 Brinell for excellent wear resistance
- ▶ 7 shroud styles to better match your application



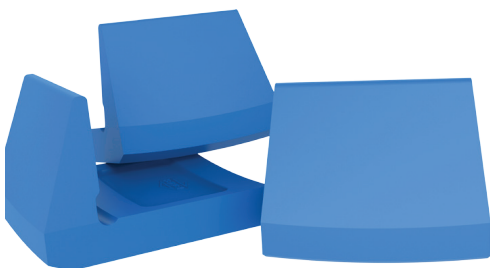
## **REVERSIBLE VERTICAL SHROUDS**

- ▶ Bolt-on shroud – no weld-on mount needed
- ▶ For 1" to 2.5" cheek plates
- ▶ Uses standard plow bolt with cone nut
- ▶ Reversible for extended wear life
- ▶ Stackable for additional protection



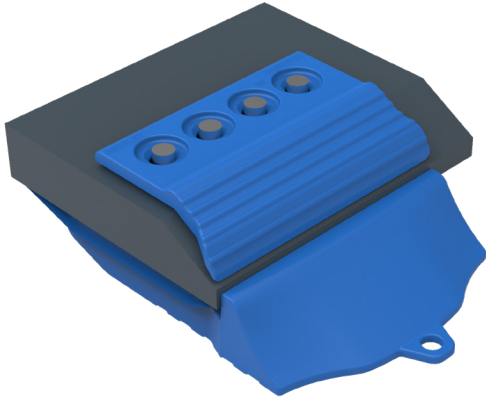
## **J-BOLT SHROUDS**

- ▶ Mechanically attached to a weld-on base [weldless base available for select dipper lip shrouds]
- ▶ Lip shrouds for lips ranging from 2 inch to 9.75 inch thicknesses
- ▶ Provides top and bottom lip protection
- ▶ Wing shrouds for ranging from 2 inch to 5.5 inch thicknesses
- ▶ Wing shrouds can be stacked for greater protection



## **CORNER HEEL SHROUDS**

- ▶ Shrouds are cast of low alloy steel for excellent wear resistance
- ▶ Multiple styles for excavator and wheel loader buckets
- ▶ Easy weld-on installation



## **BOLT-ON LIP SHROUDS**

### **SEGMENTS**

- ▷ Protects lip leading edge between adapters
- ▷ Helps prevent bottom bucket wear
- ▷ Parts to fit straight or spade lips

### **EDGES**

- ▷ Protects the length of the leading edge
- ▷ Helps prevent bottom bucket wear
- ▷ For straight lips

### **TOP COVERS**

- ▷ Mates with segments or edges to give complete lip coverage
- ▷ Covers designed to match specific segments or edges
- ▷ Parts to fit straight or spade lips



## **WEAR RUNNERS**

- ▷ Protection for high-wear areas of your earth-moving, earth-hauling equipment
- ▷ Mechanically attached to weld-on bases for quick changes
- ▷ Multiple sizes available and come in flat or tapered styles
- ▷ Can be placed side to side or end to end for extended coverage area



## **BIMETALLIC WEAR PARTS**

- ▷ Chocky Bars
- ▷ Skid Bars
- ▷ Wear Bars
- ▷ Wear Buttons
- ▷ Bolt Protectors
- ▷ Grizzly Bars

Since 1947, Hensley Industries, Inc. has dedicated itself to providing superior products and service across the globe.

Hensley's continuous commitment to safety, quality, reliability and our customers enables us to help those in the field every day.

**HENSLEY INDUSTRIES, INC.**

2108 Joe Field Road  
Dallas, Texas 75229 USA

**CUSTOMER SERVICE**

USA/Canada [888] 406-6262  
International +1 [972] 406-6262

**[www.HENSLEYIND.com](http://www.HENSLEYIND.com)**

\* All comparisons made are to the prior Hensley model, unless otherwise specifically stated.



Safety First! Hensley Industries, Inc. recommends following all safety protocols when using our products and utilizing all PPE.

©2020 Hensley Industries, Inc.  
This publication is protected under the copyright laws of the United States. Unauthorized duplication or distribution is prohibited.

**GP-01-021320**